

Product Overview

GPinfo is the leading desktop data visualisation and manipulation package for the Australasian petroleum industry. GPinfo combines a comprehensive database of petroleum exploration information with an attractive and easy to use graphical interface for viewing and manipulating data.

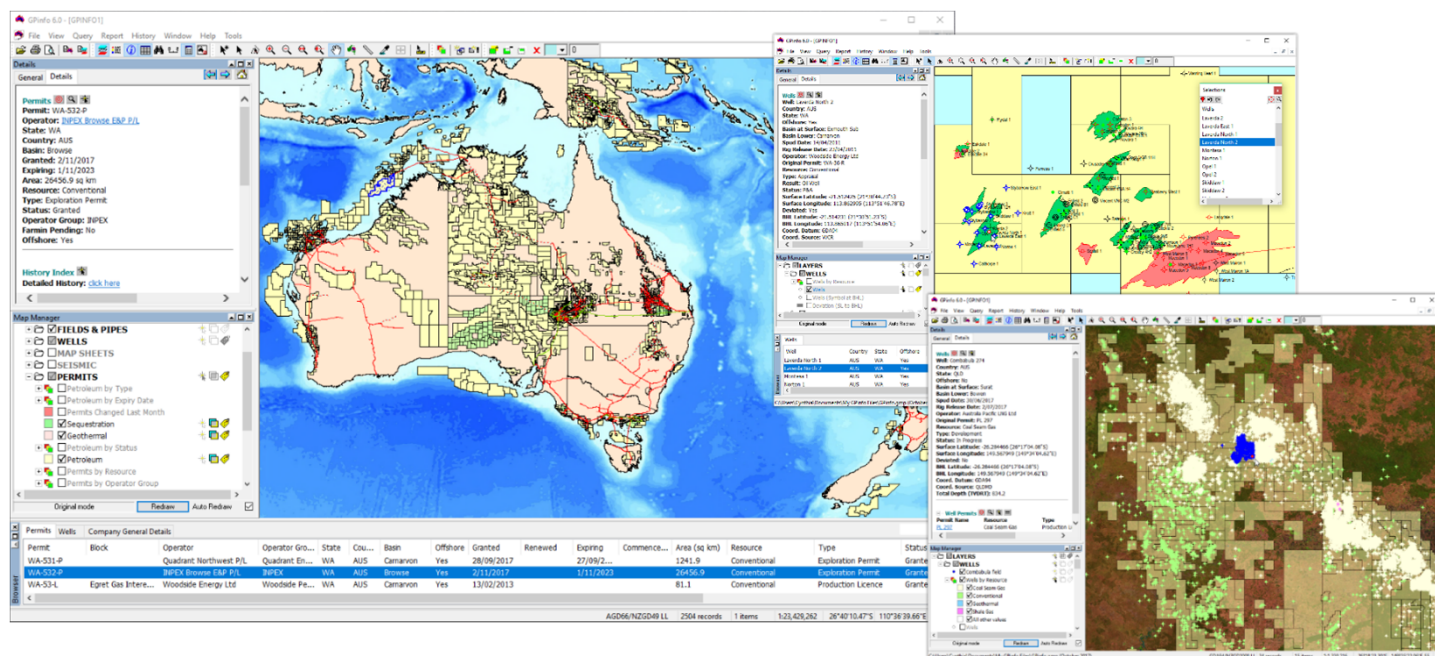
GPinfo data is collected from a range of industry sources, providing accurate and up-to-date permit, well and company data for Australia, New Zealand and Papua New Guinea.

GPinfo is offered as an annual subscription service with a fully flexible range of licensing options to suit all business models. Data updates are provided monthly and are delivered via webdownload.

Product description

GPinfo features a powerful, custom-built GIS for graphically viewing and manipulating data, making it easy to perform a range of tasks including;

- monitoring available acreage
- tracking the activities of selected companies
- outputting permit ownership summaries
- extracting presentation graphics



Product features

- Monthly data updates available by web download
- Intuitive graphical interface for easy manipulation of the data
- Powerful query builder to subset data
- Generate reports, spreadsheets and presentation graphics
- Data import/export in a range of standard industry formats
- Comprehensive work program sub-system
- Net acreage calculations

Subscription options

GPinfo is an annual subscription service. Licensing options include:

- Standalone licence on local PC providing single user access
- Floating licence on network server providing multi-user access
- Corporate licence providing unrestricted network access

Optional components include graphical export and history module

Requirements

- Operating systems: 32 bit & 64 bit Windows 7 or later, Windows Server 2008 R2 or later
- CPU: Pentium 1 GHz (2 GHz recommended) with minimum 2 GB memory (2 GB recommended)
- Graphics: High-quality graphics monitor of at least SVGA capability (1024 x 768 pixel screen display)
- Disk space: 1 GB of available disk space

Comprehensive, searchable database

The principal searchable contents of the GPInfo database are Permits, Wells and Companies.

- All current petroleum, geothermal and sequestration permits with full ownership details, operator, grant and expiry dates, and work programs.
- Over 28,000 petroleum, geothermal & shale gas wells. Attributes include: surface/bottom-hole location, basin, operator, spud/rig release dates, depth, result & status.
- Extensive company information including particulars of parent/subsidiary relationships, contact details for offices & key personnel.

History dataset

The History dataset is an optional module providing permit geometry and detailed ownership information from 1991 to now.

- Generate complete display of permits as existed at any month from 1991 onward.
- View participants and interests from all permits in historical datasets.

- Create queries selecting specific historical permits e.g. display all permits Woodside operated in March 1998.
- Show a timeline of the history of a permit to reveal when status changes, ownership changes and partial relinquishments/extensions occurred.

Notable features

Graphical Information

- View & query graphical information, including well locations, permit polygons and field outlines.
- Attribute information corresponding to selected graphical objects displayed in a text window.

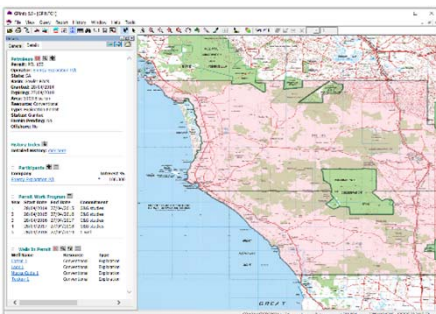
Query Builder

- A powerful query builder enables sub-setting of data based on underlying attributes. Create multiple, persistent queries and perform dynamic data selections.

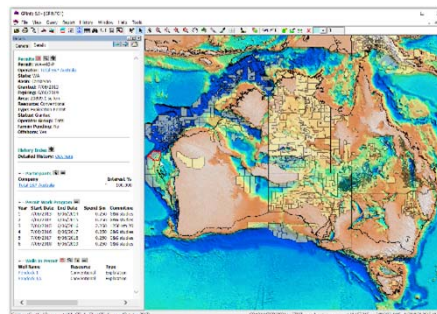
Import Your Own Data

- Import own geospatial and tabular data into GPInfo. View and manipulate data using full range of features from GPInfo.
- Import data in a range formats, including SHP, MID/MIF and MDB.
- Attach large-scale, high-resolution imagery to enhance on-screen display and graphical output.

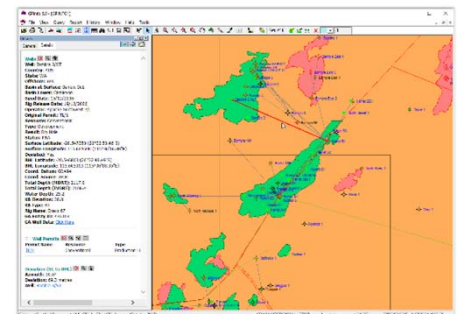
- Extract textual data from GPInfo in the form of reports and spreadsheets.
- Capture on-screen displays for use in creating presentation graphics.
- Export graphical data in real world co-ordinates for use in third party software, including Petrosys, ArcGIS & MapInfo.



Outline of South Australian exploration permit PEL 153 and application area PELA 649 superimposed on NATMAP Raster 1:250k image. Details of PEL 153 are displayed in a text window.



Transparent petroleum permits superimposed over a depth-to-basement image of Australia. Use large-scale, high-resolution imagery as a backdrop to enhance the display of your petroleum data.



Deviated wells around Harriet and Bamba fields on Northwest Shelf. Line connects surface location with bottom-hole location for all deviated wells. Details for current well displayed in a text window.

GPInfo Store

GPInfo Petroleum Permits of Australasia Map

Full-colour A0-sized wall map covering Australia, New Zealand and Papua New Guinea, showing permit polygons, well locations, field outlines and pipeline routes.

GPInfo Petroleum Permits of Australasia Book

Digital publication with quarterly updates, showing full permit ownership information for all permits in the region, listed by permit and by company.

Available for purchase via our webstore: www.gpinfo.com.au/publications

For more information, call +61.8.8227.2799 or email info@gpinfo.com.au