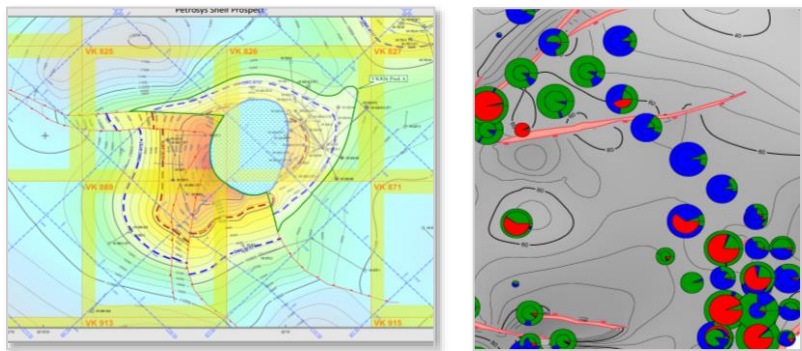


**Petrosys PRO** is now available on a pay per use basis through PetroCubic WorkSpaces, an easily accessible cloud hosted service that gives you a data processing environment scaled to the needs of your project, whether it's just a couple of maps to round off a prospect review, or a major field study leveraging an international team of experts.

### NOW AVAILABLE

#### Petrosys PRO - *Software as a Service*

Quality mapping, flexible surface calculations, accountable volumetrics and repeatable workflows are now all available at short notice through PetroCubic WorkSpaces.



### Only Pay For What You Use

- Chose from daily, weekly and monthly plans to match your software investment to your project cash flow.
- Schedule your software use in line with project timelines for effective cost recovery on consulting projects.

*To see all pricing sign-in at*  
[workspaces.petrocubic.com](http://workspaces.petrocubic.com)

### Broad Applications Portfolio

In a PetroCubic Workspace your Petrosys application can run in conjunction with a growing range of other essential tools for oil and gas exploration and development:



### Industrial Strength IT – Personal Convenience

On PetroCubic you aren't limited by the memory of your laptop or the speed of its CPUs.

The PetroCubic team provide the sort of high-level IT support expected from IT departments in tech savvy oil and gas companies, with the personal response from a service focused group whose only task is to ensure you receive the best possible computing experience.

### Globally Accessible

Being cloud hosted, your workspace isn't tied to any single computer or location.

Create a shared workspace for global collaboration on international projects.



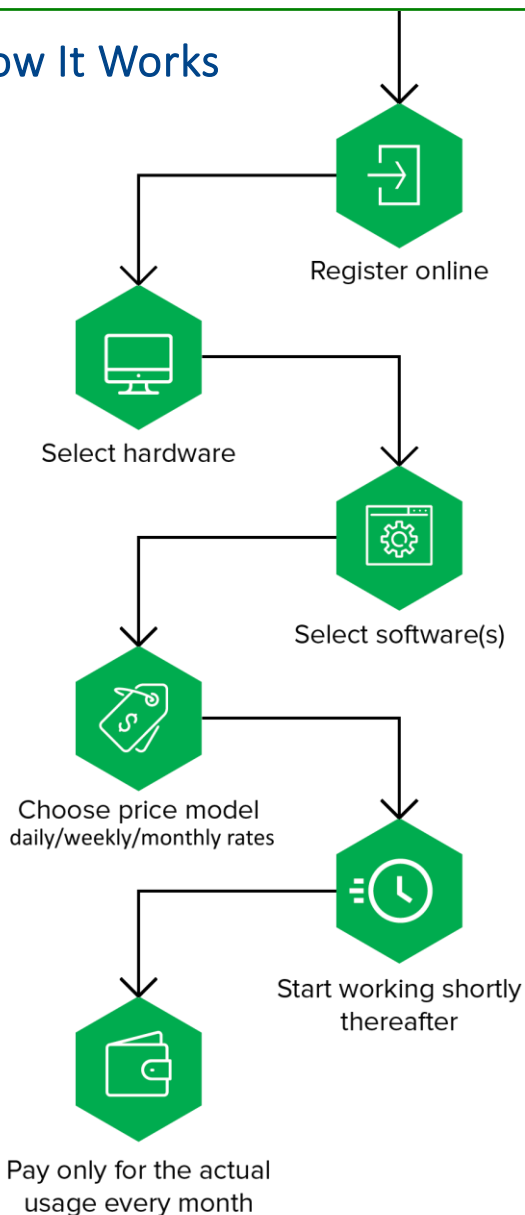
***All you need to supply is a computer with an Internet browser and a good Internet connection!***

### Secure

Named user access lets you control exactly who can see your work. Automatic backups provide long term security with no effort on your part.

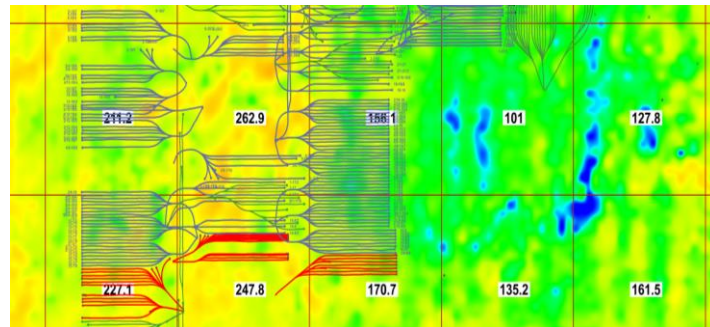


## How It Works

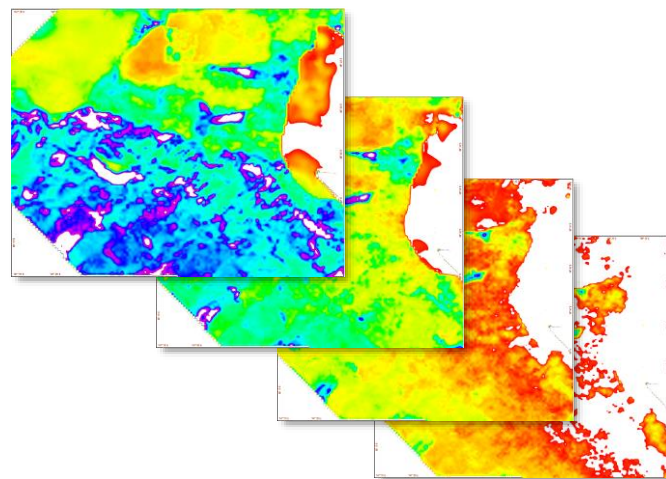


## Why Petrosys PRO?

Petrosys PRO combines the best G&G focused mapping, with powerful surface manipulation and volume calculations and has been field tested in a wide range of cloud computing environments.



The Petrosys PRO map canvas allows geoscientists and engineers to easily display well, seismic, lease, GIS, remote sensing and other data to integrate their knowledge in a way that helps teams consolidate their ideas and manage successful survey, drilling and exploitation programs. Rich display functionality targeted at the EP space allows creation of production quality displays, giving full control of presentation content in time critical situations, and rapid easy updating with last minute changes in data and opinions. The excellent coordinate reference system (CRS) support makes Petrosys PRO a mandatory tool for international ventures and allows for optimal management of datum conversion on data sets related to established operations.



Integrated surface modeling tools allow computation of complex subsurface structures with excellent handling of faults and rapid accountable computation of volumes. Surface tools include a diverse range of gridding algorithms, computational methods, and interpolation, filtering and editing techniques. Surface editing tools allow manual correction of digital grids to incorporate geological knowledge. Automation tools allow the creation of easily reproducible and auditable field mapping workflows.

## GET STARTED TODAY

1. Go to [workspaces.petrocubic.com](https://workspaces.petrocubic.com)
2. Decide on a plan that fits your needs
3. Place your order. Done!

*You'll have your login details with everything you need pre-installed and ready to use within 24 hours.*

For more details on the Petrosys PRO implementation, download the FAQ from the Petrosys web site, [www.petrosys.com.au](https://www.petrosys.com.au)

Petrosys PRO is provided by PetroCubic as a one stop shop, handling software licensing and workspace provisioning through a single account.