



GPINFO

The definitive source for Australasian petroleum exploration data

PETROSYS

Product Overview

GPinfo is the leading desktop data visualisation and manipulation package for the Australasian petroleum industry. It combines a comprehensive database of petroleum exploration information with an attractive and easy to use graphical interface for viewing and manipulating the data.

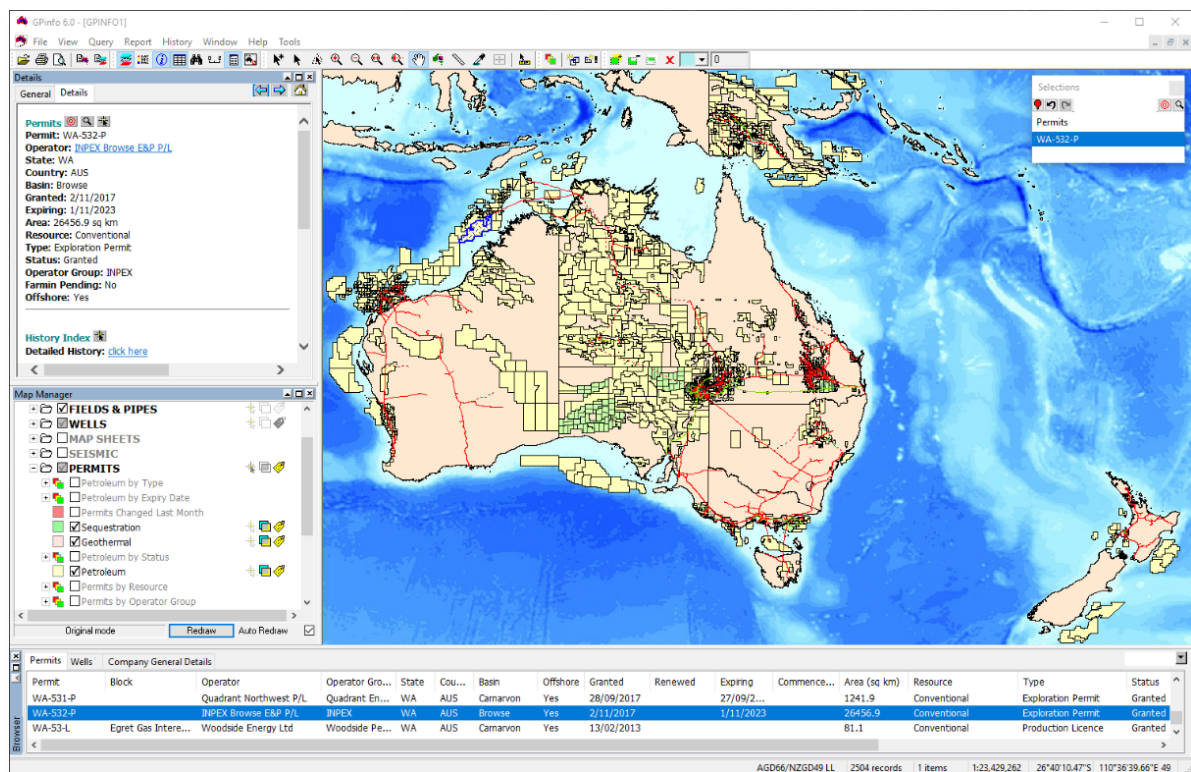
The industry standard for the Australasian region, GPinfo provides accurate and up-to-date permit, well and company data for Australia, New Zealand and Papua New Guinea.

GPinfo is offered as an annual subscription service with a fully flexible range of licensing options to suit all business models. Data updates are provided monthly and are delivered via webdownload.

Product description

GPinfo delivers the latest petroleum data directly to your desktop, providing you with essential information to pursue your business goals.

Stay informed of developments in the Australasian industry with GPinfo as your primary information resource.



Benefits

GPinfo data is collected from a range of industry sources. Our team of petroleum information analysts liaise with companies and government agencies, review ASX announcements and press releases and cross reference the data to ensure our subscribers are provided with the most accurate, up-to-date and comprehensive database of Australasian petroleum exploration information.

Regular monthly updates deliver the latest data via web download. Users also receive an e-newsletter which includes an insightful summary of industry activity from the previous month.

GPinfo features a powerful, custom-built GIS front-end for graphically viewing and manipulating the data. This makes it easy to perform a range

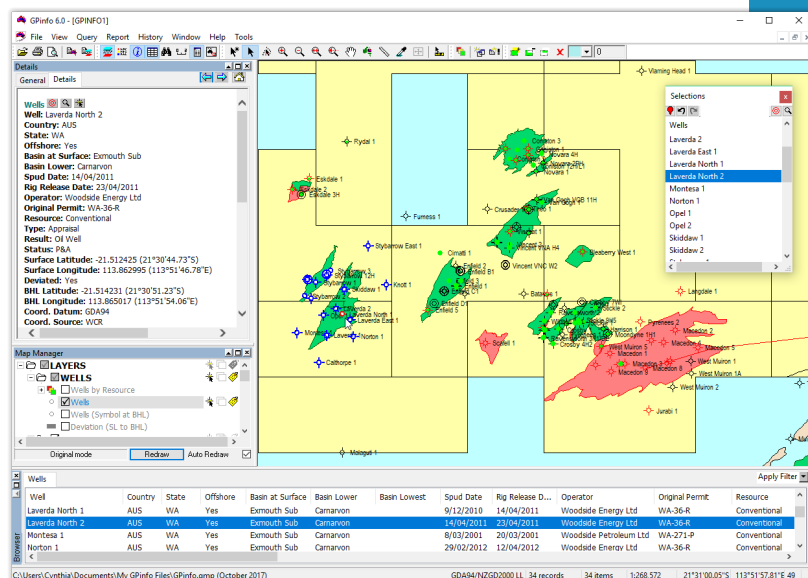
of tasks including monitoring available acreage, tracking the activities of selected companies, outputting permit ownership summaries and extracting presentation graphics. You can easily add in your own geospatial information to view alongside the standard system-data layers, and use the same interface to display, review and subset it.



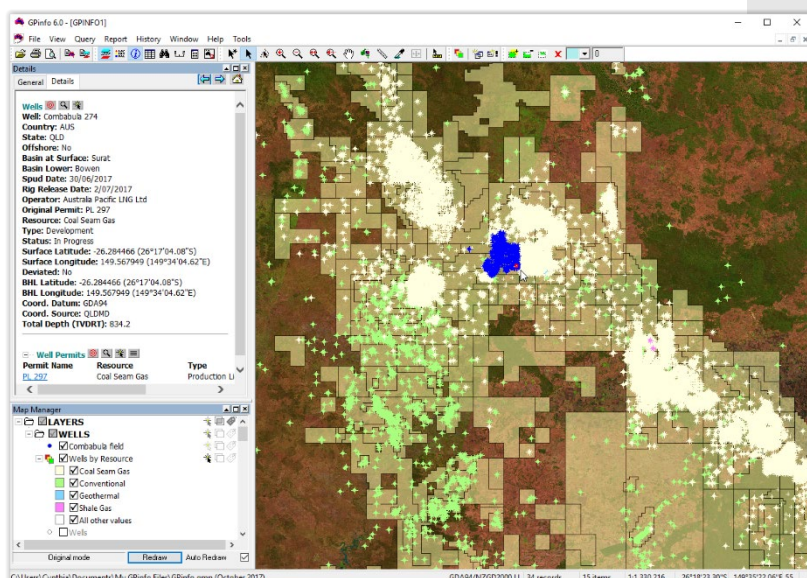
GPINFO

www.gpinfo.com.au

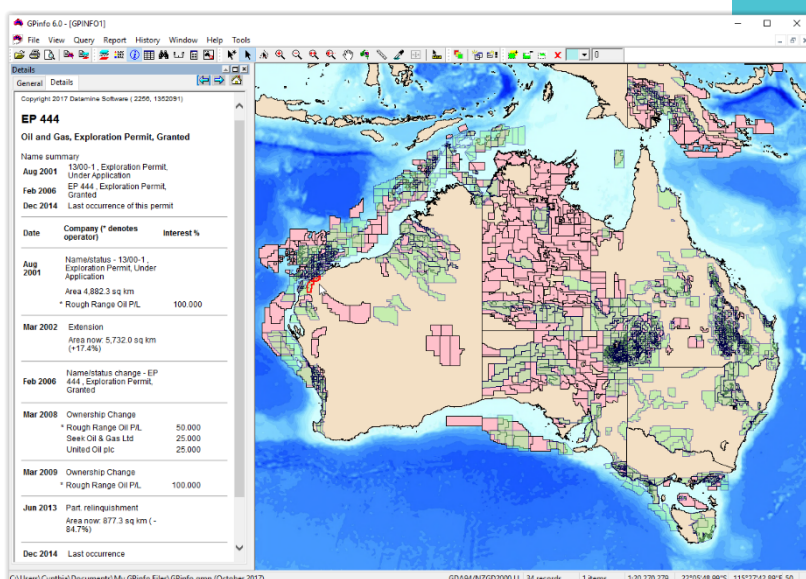
GPinfo™ is the most accurate Australasian petroleum exploration database available



Wells around the Macedon field on the Northwest Shelf, Western Australia. Details of the current well are displayed in a text window and all selected wells are displayed in a tabular window.



Coal Seam Gas wells in white and conventional wells in green superimposed over a Landsat satellite image of the southern Surat Basin, Queensland. The Combabula wells are highlighted in blue.



March 2002 petroleum permit coverage in green superimposed over October 2017 coverage in pink. Analyse developments in exploration activity over time using the GPinfo History Dataset.

Added value

Comprehensive, searchable database

The principal searchable contents of the GPinfo database are Permits, Wells and Companies. All current petroleum, geothermal and sequestration permits are included with full ownership details, operator, grant and expiry dates, and work commitments.

There are currently over 28,000 petroleum, geothermal and shale gas wells in the region with attributes including surface and bottom-hole location, basin, operator, spud and rig release dates, depth, result and status. For Australian wells, we also provide a hyperlink to GeoscienceAustralia's web page for each well, giving you access to a valuable second source for exploration information.

The GPinfo database provides extensive company information including particulars of parent/subsidiary relationships plus contact details for offices and key personnel.

Secondary data sets include oil and gas field outlines, pipeline routes, map sheets, coastlines, state and offshore boundaries, bathymetry and major towns.

A range of third party data sets is provided which includes seismic survey locations and large format imagery.

History dataset

The GPinfo™ History Dataset is an optional module that provides permit geometry and detailed permit ownership information from 1991 to the present. It includes every petroleum permit that has existed in the region during that time.

The History Dataset allows GPinfo users to perform the following operations:

- Generate a complete display of permits as they existed at any month from 1991 onwards.
- Click on any permit from the historical dataset and show the participants in that permit and their interests.
- Create queries that select specific historical permits e.g. display all the permits that Woodside operated in March 1998.
- Show a timeline of the history of a permit to reveal when status changes, ownership changes and partial relinquishments / extensions occurred.

Notable features

Graphical Information

- All graphical information, including well locations, permit polygons and seismic line locations, can be viewed in the on-screen map and queried intuitively by simply pointing and clicking.
- Attribute information corresponding to the selected graphical objects is displayed in a text window, with hyperlinks connecting the key datasets, allowing you to explore data relationships via nested MS Windows Internet Explorer.

Query Builder

- A powerful query builder enables you to subset the data based on the underlying attributes. Create multiple, persistent queries and perform dynamic data selections.

Import Your Own Data

- Import your own geospatial and tabular data into GPinfo and display it alongside the standard system layers.
- Data can be viewed and manipulated using the full range of features from the GPinfo software.
- Data can be imported in a range of standard industry formats, including SHP, MID/MIF and MDB.
- Attach large-scale, high-resolution imagery to enhance on-screen display and graphical output.
- Extract textual data from GPinfo in the form of reports and spreadsheets.
- Capture on-screen displays for use in creating presentation graphics.
- Export graphical data in real world co-ordinates for use in third party software, including Petrosys, ArcGIS & MapInfo.

Product features

- Monthly data updates available by web download
- Intuitive graphical interface for easy manipulation of the data
- Powerful query builder to subset data
- Generate reports, spreadsheets and presentation graphics
- Data import/export in a range of standard industry formats
- Comprehensive work program sub-system
- Net acreage calculations by company

Subscription options

GPinfo is an annual subscription service. A range of licensing options are available, including:

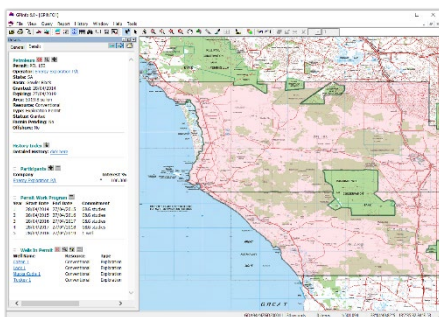
- Standalone licence on local PC providing single user access
- Floating licence on network server providing multi-user access
- Corporate licence providing unrestricted network access

Optional components include graphical export and history module.

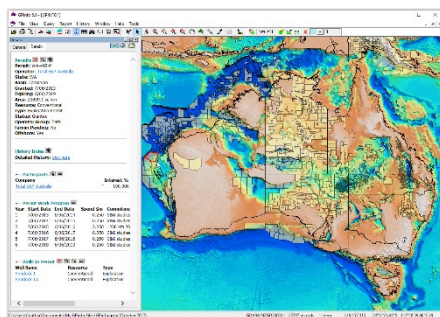
Subscription provides monthly updates, monthly newsletter and telephone support.

Requirements

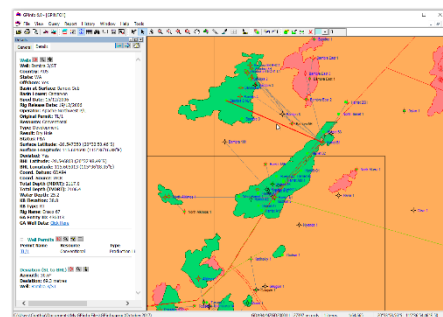
- Supported operating systems: 32 bit and 64 bit Windows 7 or later, Windows Server 2008 R2 or later
- CPU: Pentium 1 GHz (2 GHz recommended) with minimum 2 GB memory (2 GB recommended)
- Graphics: High-quality graphics monitor of at least SVGA capability (1024 x 768 pixel screen display)
- Disk space: 1 GB of available disk space
- Internet Explorer: 8.0 or later
- Adobe Reader: 6 or later



Outline of South Australian exploration permit PEL 153 and application area PELA 649 superimposed on NATMAP Raster 1:250k image. Details of PEL 153 are displayed in a text window.



Transparent petroleum permits superimposed over a depth-to-basement image of Australia. Use large-scale, high-resolution imagery as a backdrop to enhance the display of your petroleum data.



Deviated wells around the Harriet and Bamba fields on the Northwest Shelf. A line connects surface location with bottom-hole location for all deviated wells. Details for the current well are displayed in a text window.

GPinfo Store

GPinfo Petroleum Permits of Australasia Map

Full-colour A0-sized wall map covering Australia, New Zealand and Papua New Guinea, showing permit polygons, well locations, field outlines and pipeline routes.

Available for purchase via our webstore;

www.gpinfo.com.au/publications

Contact Us

For more information;

Phone: +61 8 8227 2799

Email: info@gpinfo.com.au

Visit: www.gpinfo.com.au