



Software Release Notes

dbMap/Web Version 2024.4.1

dbMap®

PLDB™

1 Overview

dbMap/Web 2024.4.1 is a minor patch release targeting critical issues and security updates. Support for Azure Maps has also been implemented in this release.

2 Azure Maps Support

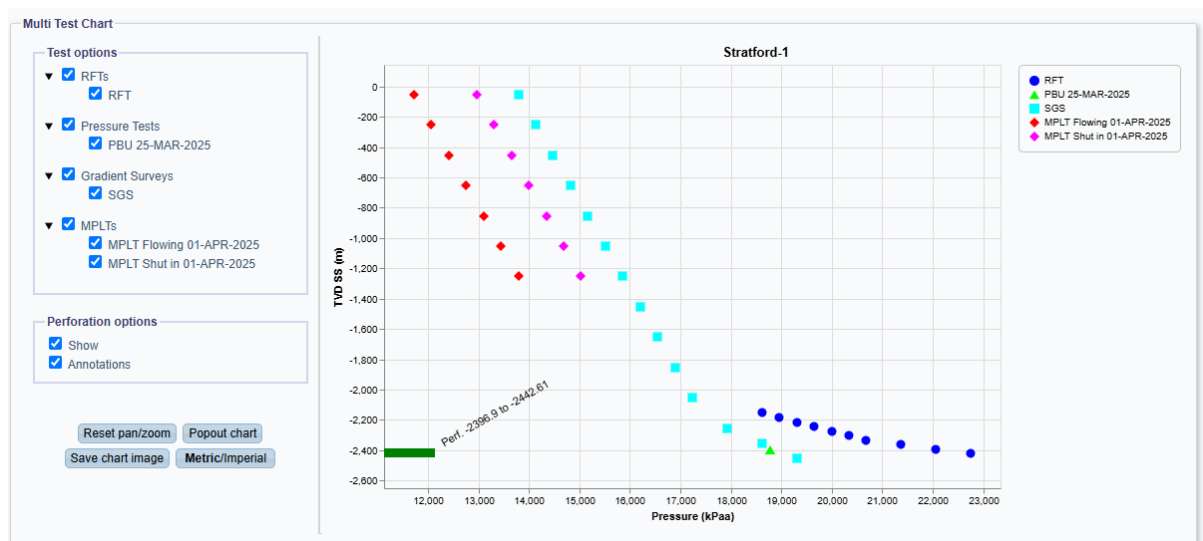
Bing Maps 'Basic' accounts will no longer be able to access the service after June 30, 2025. Clients who wish to continue using similar base map imagery need to migrate to Azure Maps. Support for this has been added to dbMap/Web in this release. Please review the release instructions for configuration details.

3 Overview

dbMap/Web 2024.4 introduces new charting and diagnostic functionality to display and analyze well test data.

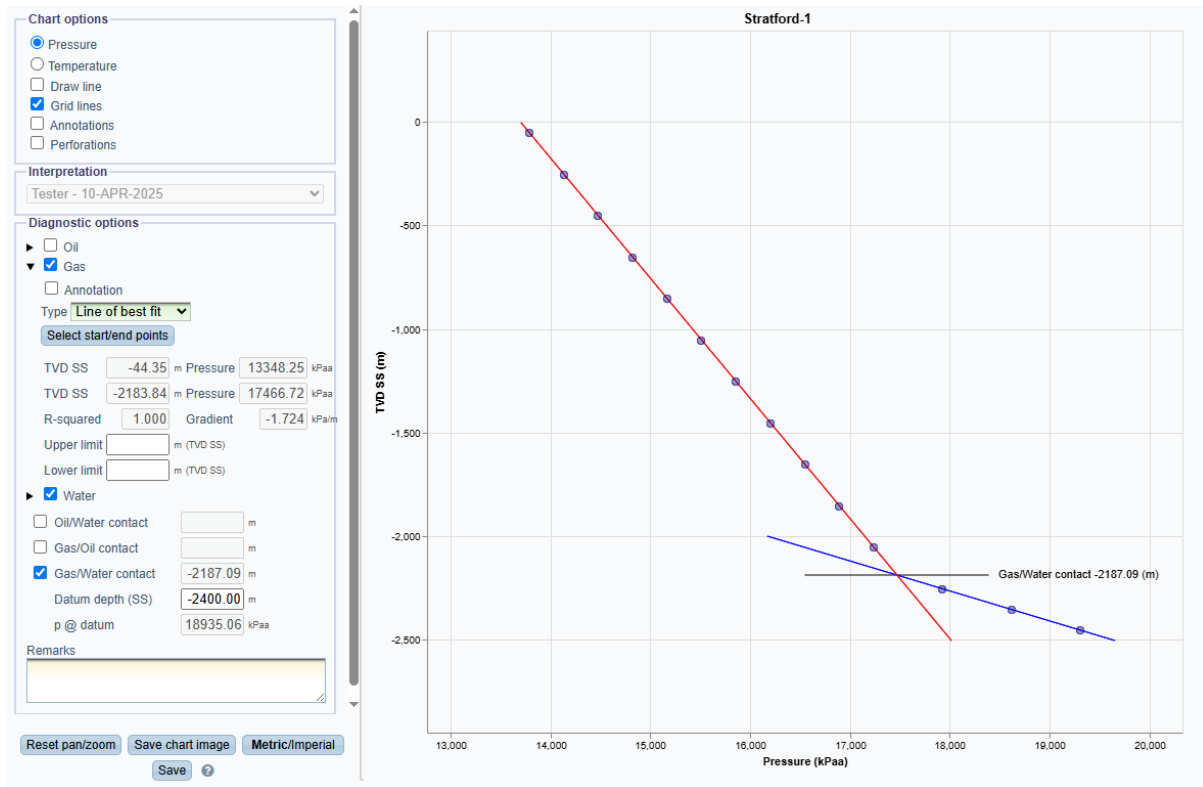
4 Multi Test Chart

The 'Wells / Multi Test Chart' option has been added to allow charting of all RFT, pressure test, gradient survey and MPLT tests on a single chart. The chart also supports displaying current perforations and isolations.



5 Gradient Survey Chart

The 'Wells / Gradient Survey' screen has been enhanced to include a chart of the 'Detailed test data' pressure and temperature values. The chart also supports displaying the perforations and isolations that were current on the test date. Diagnostic tools are also available to analyze the data, compute contact points and pressure at an entered datum depth.



6 2024.3 Overview

dbMap/Web 2024.3 introduces a range of new features to the Records Management module, including **Generic Attributes**, **Related Items**, and **improved workflows**. These features improve the user experience, offer greater flexibility, and deliver stronger support for managing digital and physical assets.

7 Records Management – Generic Attributes

Generic attributes can be assigned to an item based on the item type, category and/or subcategory. This allows additional metadata to be captured against an item without the need to modify the database or application.

Attributes can be added, removed and assigned to category / subcategory groups in the user interface and can be configured as text, date, numeric or code lookup values.

Once configured, the attribute values are visible on the Records Management header:

Item	Media	Details	Attributes	Related Items	Linked	Record info
	Attribute			Value		
1	Core number			1		
2	Recovery date			04-MAY-2020		
3	Top depth			920		
4	Base depth			925		

Attributes list on the Records Management header.

Attributes values can be edited on the new ‘Records Management / Attributes’ screen:


Metric/Imperial		Edit
Core number	1	Top depth 920.00 m
Recovery date	04-MAY-2020	Base depth 925.00 m

‘Records Management / Attributes’ screen.

8 Records Management – Related Items

A 'Related Items' list has been added to the Records Management header to expose RM items that have been linked together via Attachments.

Item	Media	Details	Attributes	Related Items	Linked	Record info
			Title / filename		Category	
1	Q	🔗	06. Manaia-2 Basic Water Flood.xls		Well	Cor
2	Q	🔗	13012 Final Rig Position_30 in set Manaia-2_Final Fix C Well			

 View 1 - 2 of 2

Show all

Related Items tab on the Records Management header.

9 Records Management – Improved Workflows

Several new options have been introduced to enhance the process of locating and accessing the data you're searching for, making it quicker, more intuitive and more efficient.

9.1 Quick Preview

A 'Preview' option has been added to the Records Management list and the Related Items list on the Records Management header to launch the relevant preview option for digital documents.

			Title / filename	Category	Sub category
1	<input checked="" type="checkbox"/>	<input checked="" type="checkbox"/>	01. Manaia-2 SCAL Selection & Test Schedule.xls	Well	Core
2	<input checked="" type="checkbox"/>	<input checked="" type="checkbox"/>	02. Manaia-2 Brine Composition.xls	Well	Core
3	<input checked="" type="checkbox"/>	<input checked="" type="checkbox"/>	03. Manaia-2 Electrical Properties.xls	Well	Core
4	<input checked="" type="checkbox"/>	<input checked="" type="checkbox"/>	04. Manaia-2 Air-Brine Capillary Pressure.xls	Well	Core
5	<input checked="" type="checkbox"/>	<input checked="" type="checkbox"/>	05. Manaia-2 High Pressure MICP.xls	Well	Core
6	<input checked="" type="checkbox"/>	<input checked="" type="checkbox"/>	06. Manaia-2 Basic Water Flood.xls	Well	Core
7	<input checked="" type="checkbox"/>	<input checked="" type="checkbox"/>	07. MICP and Cent Pc Raw Data.xls	Well	Core




Preview option in the Records Management list.


9.2 Quick Links

Quick links have been added to make it easier to jump to the containing physical item; the list of content items; the list of related items. Using these links opens Records Management in a new browser tab with the list pre-populated with the relevant items.

Item	Contained by	Related Items	Linked	Circulation	Record info
Label	Well Logs			Category	Well
Reference number				Sub category	Well Log
Barcode				User assigned category?	<input checked="" type="checkbox"/>
Media type	CDROM/DVD			Catalogued by	TESTER
Status				Catalogued date	15-NOV-2024
Onshore?				Destruction date	
				Retention period	
Storage path	8 Greenway Plaza, Suite 850				
See more					





'See more' option on the Records Management header 'Contained by' tab.


Item	Media	Attributes	Contents	Related Items	Linked	Circulation	Record info
		Title / filename			Category	S	
1		Well_log_run_1.las			Well	Well Log	
2		Well_log_run_2.las			Well	Well Log	
3		Well_log_run_3.las			Well	Well Log	


View 1 - 3 of 3

Show all

'Show all' option on the Records Management header 'Contents' tab.

Item		Media	Details	Attributes	Related Items	Linked	Record info
			Title / filename			Category	
1			06. Manaia-2 Basic Water Flood.xls			Well	Cor
2			13012 Final Rig Position_30 in set Manaia-2_Final Fix C			Well	


View 1 - 2 of 2

Show all

'Show all' option on the Records Management header 'Related items' tab.

10 2024.2 Overview

dbMap/Web 2024.2 adds support for Single Sign On to allow users to securely log in without providing a username and password. Records Management has also been enhanced, introducing a preview option for shapefiles and Check-in / Checkout functionality for physical assets.

11 Single Sign On

Single Sign On (SSO) provides the ability for users to securely log into dbMap/Web without having to specify their username and password, as well as easier management of user accounts for IT administrators. dbMap/Web now supports Single Sign On for sites who have On-Premises Active Directory installations.

Related to the Single Sign On support there is now a new login screen for users that are not using Single Sign On:



PETROSYS

Log in to dbMap/Web

Username

Password

Log In

VL38 2024.2 (308893)

A series of IT configuration steps are needed to setup SSO including Active Directory configuration and changes to user accounts in the database to link them to Active Directory.

Petrosys PRO does not currently support Single Sign On user accounts, but it is actively being worked on. Once SSO is also supported in PRO we will share more information on configuration.

12 Records Management – Check-in & Checkout

New 'Borrow' and 'Return' buttons have been added to Records Management, allowing users to Checkout and Check-In physical items. Simple barcode scanning is also supported when selecting items to Check-in / Checkout. Advanced search filter options have been added to search for items by due date, circulation status, and who has borrowed the item.

Borrow a list of Items

Checked out byPetrosys Pty Ltd

Authorized by

Due date30-MAY-2024

Reference number

Reason for borrowing

Scan...

		Title / filename	Barcode	Category	Sub category	Media type	R
1		PC96-Stratford Field tape 283 A		Seismic	SEGD	3490 Cartridge	
2		PC96-Stratford Field tape 284 A		Seismic	SEGD	3490 Cartridge	
3		PC96-Stratford Field tape 285 A		Seismic	SEGD	3490 Cartridge	

3 selected / 0 unselected - View 1 - 3 of 3

OKCancel

Return a list of Items

Scan...

		Title / filename	Barcode	Category	Sub category	Media type	R
1		PC96-Stratford Field tape 283 A		Seismic	SEGD	3490 Cartridge	
2		PC96-Stratford Field tape 284 A		Seismic	SEGD	3490 Cartridge	
3		PC96-Stratford Field tape 285 A		Seismic	SEGD	3490 Cartridge	

3 selected / 0 unselected - View 1 - 3 of 3

OKCancel

13 Records Management – Shapefile Preview

Shapefiles catalogued in Records Management can now be previewed without having to download and open in another application. When previewing, a basic map is displayed along with some information on the CRS and bounding box of the data.



14 2024.1 Overview

dbMap/Web 2024.1 adds functionality to automatically recalculate directional survey offsets, TVDs & locations; Well bottom hole locations & TD TVDs; and Formation TVDs, when performing certain actions within the application or while loading directional survey data.

Production charts have been enhanced with new charting options and additional data series available on the chart. New options have also been added to chart data for a selection of Basins, Fields or Well zones.

Finally, a new perforation diagram option has been added to display the perforated, isolated and stimulated state of a well over time.

15 Automated recalculation of Depths and Well Locations

Options to automatically recalculate directional survey point offsets, TVDs & locations; well bottom hole location & TD TVD; and Formation TVDs have been added to dbMap/Web. There are several ways to make use of the new functionality:

- Values can be bulk recomputed for a selection of wells from the Wells list.
- Option on the Well header panel to recompute values for the current well.
- Users are automatically prompted to optionally synchronize values after editing relevant values on the Well Header, Directional Survey Header, and Directional Survey Points screens.
- Option to recompute values for the current survey on the Directional Survey Points list.
- Option to recompute values when loading data via the Directional Survey data loader.

Compute TVDs / BH

Please select which of the following values you would like to bulk compute for the currently selected wells:

☐ Directional survey offsets/TVDs

☐ Bottom hole locations

☐ Well TD TVDs

☐ Formation TVDs

☐ Trial run

27 Wells selected

Recompute

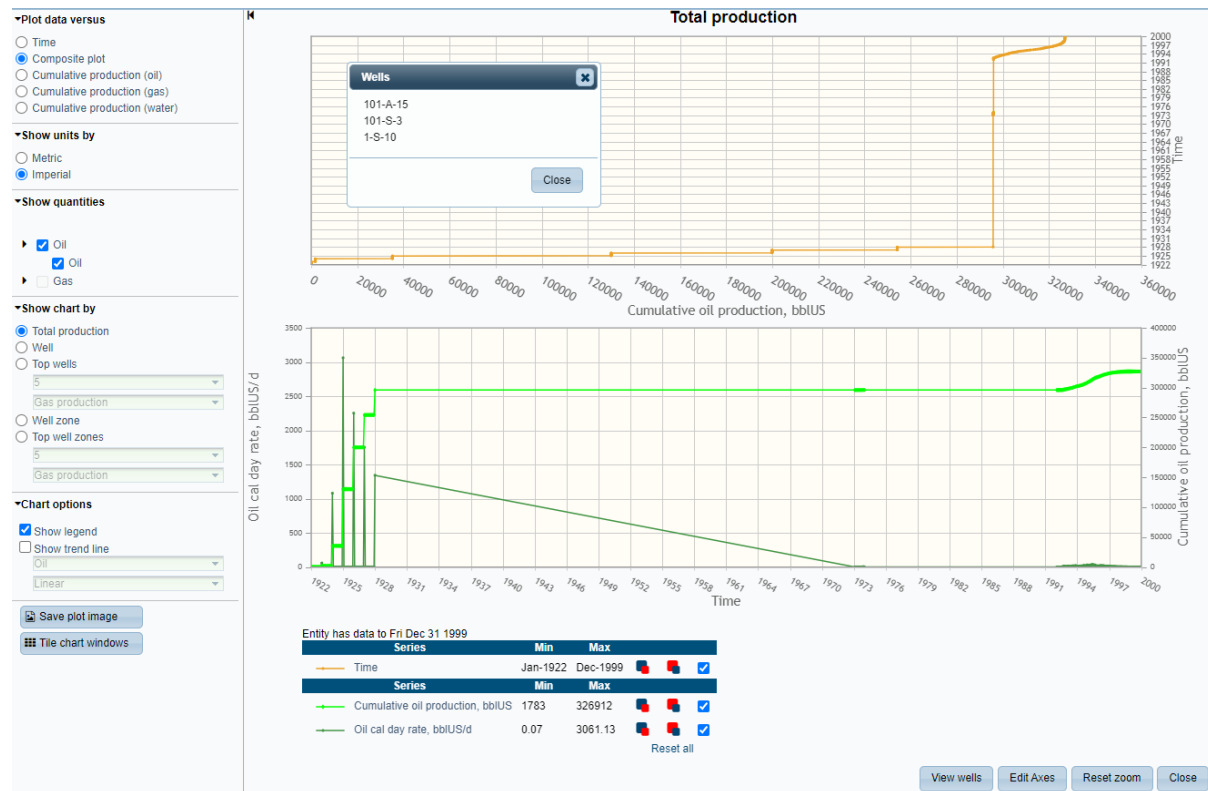
Cancel

16 Production Chart Enhancements

The single and multi-well production plots have been extended with additional options. There are also new screens and plots to show production for a selection of Basins, Fields, or Well Zones.

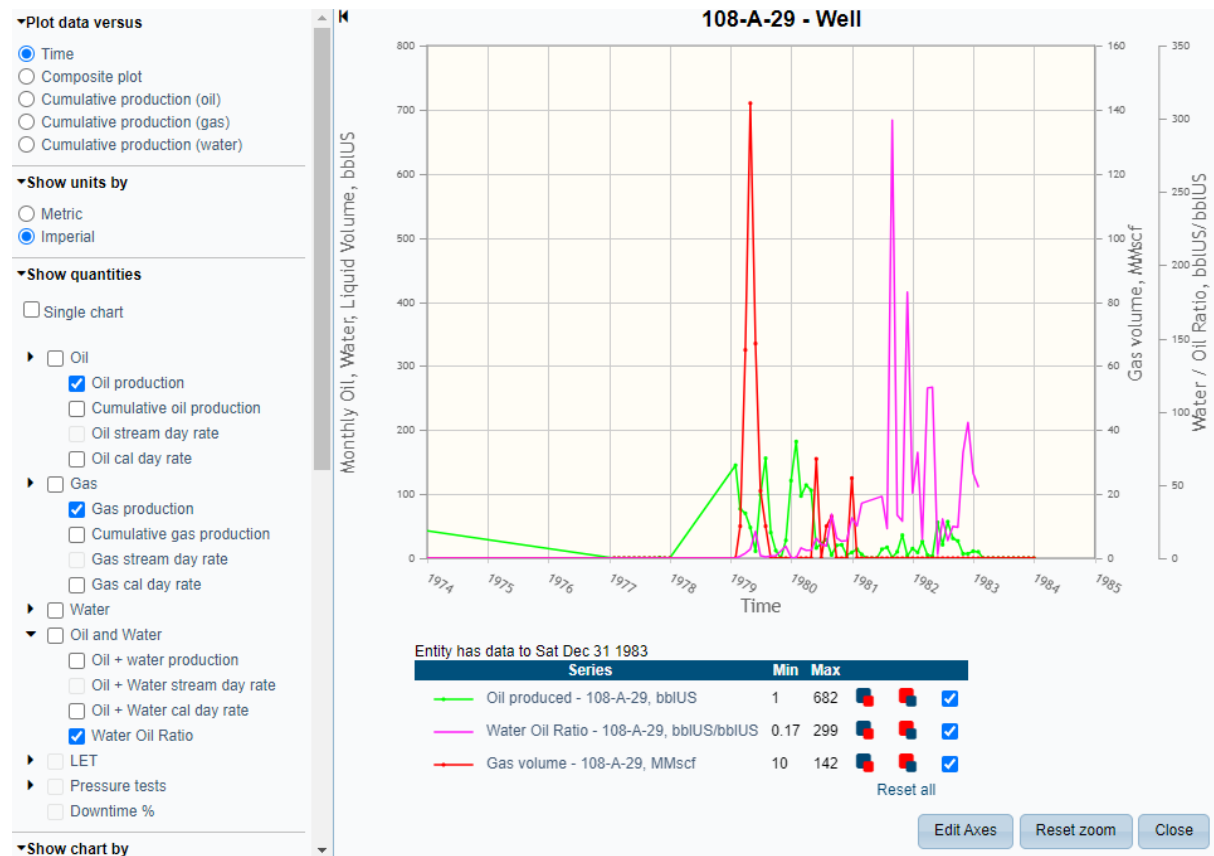
Multi Well Production Chart Enhancements

- Option to display a composite plot.
- Options to plot data versus oil, gas, or water production



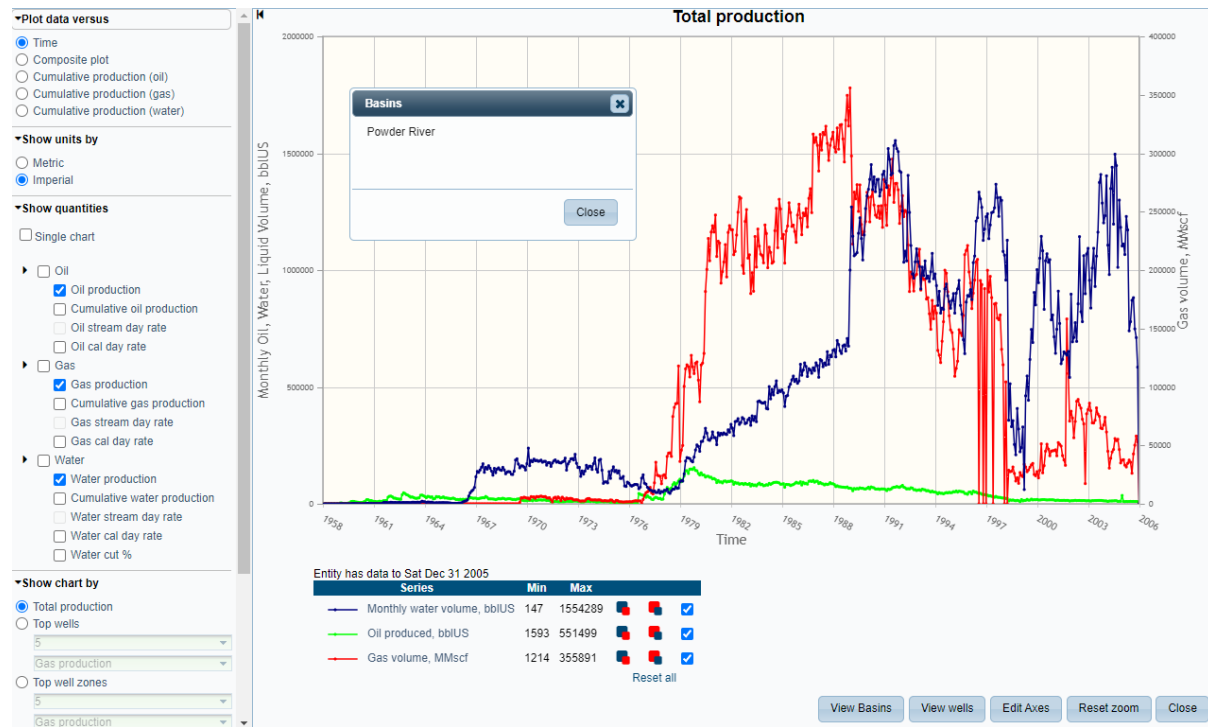
Single Well Production Chart Enhancements

- Option to plot data versus water production.
- New data series plotting Water Oil ratio.



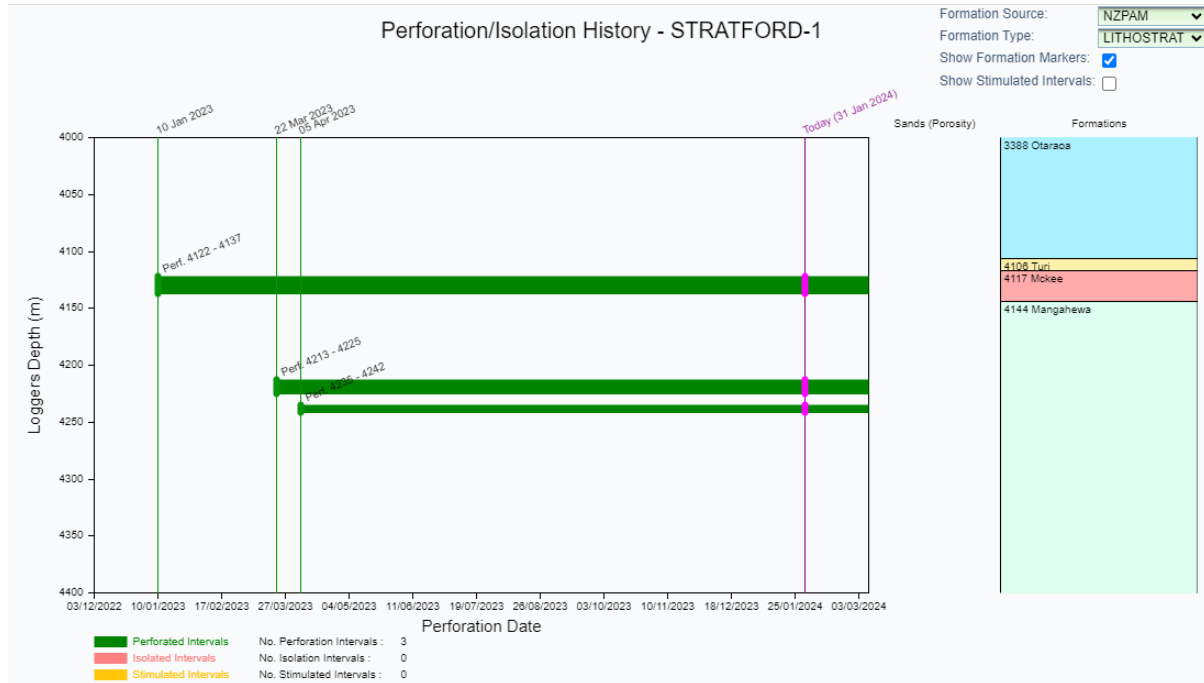
Production by Basin, Field, or Well Zone

Under the Wells main menu item, a new 'Production by' option has been introduced to allow production plots to be generated based on a selection of Basins, Fields, or Well Zones.



17 Perforation Diagram

A new perforation diagram option, showing the state of the well over time, has been added to the “Wells / Perforations” list. The diagram shows perforated, isolated, and stimulated intervals and supports zooming to a specific depth / date range.



Detailed Release Notes Summary dbMap/Web 2024.4.1

Enhancements

dbMap/Web - Client

[85782](#) Wells / Coal Summaries - Updated MT and TVT labels (Origin only)

dbMap/Web - General

[84352](#) Added support for Azure Maps background imagery

[85892](#) Tomcat security updates

[85781](#) Wells / Samples - Lithology added to the grid

Detailed Release Notes Summary dbMap/Web 2024.4.1

Bug Fixes

dbMap/Web - Client

[85779](#) Wells - Advanced Search - Can filter using all three 'Well category (second)' fields (Santos only)

dbMap/Web - General

[85644](#) Directional Surveys Data Loader - All survey points are imported successfully

Petrosys Release dbMap/Web 2024.4.1

Detailed Release Notes

[dbMap/Web - Client](#) [Enhancements](#)

Wells / Coal Summaries - Updated MT and TVT labels (Origin only) 85782

The 'MT' and 'TVT' labels on the 'Wells / Coal Summaries' screen have been updated to 'Measured Thickness' and 'True Vertical Thickness' respectively.

[dbMap/Web - Client](#)

[Bug Fixes](#)

Wells - Advanced Search - Can filter using all three 'Well category (second)' fields (Santos only) 85779

The Wells Advanced Search configuration has been updated to allow the three 'Well category (second)' fields to be filtered independently.

[dbMap/Web - General](#) [Enhancements](#)

Added support for Azure Maps background imagery 84352

Azure Maps background imagery is now supported in dbMap/Web. Refer to the release instructions for configuration details.

Tomcat security updates 85892

The latest security updates have been applied to the tomcat version embedded in dbMap/Web. These updates resolve a number of known vulnerabilities.

Wells / Samples - Lithology added to the grid 85781

The 'Wells / Samples' grid now includes a 'Lithology' column showing a comma delimited list of Lithology child records.

[dbMap/Web - General](#)

[Bug Fixes](#)

Directional Surveys Data Loader - All survey points are imported successfully 85644

Fixed a data loading cache issue that caused some directional survey points to be skipped. All survey points are now successfully loaded.

Detailed Release Notes Summary dbMap/Web 2024.4

Enhancements

dbMap - Administration

[85089](#) GeoServer upgraded in dbMap/Web 2024.4

dbMap - Client

[85054](#) Added a Summary Dashboard (SKK only)

dbMap/Web - Client

[85222](#) Land rights are now filtered by work group security in addition to Wells, Seismic etc (SKK Migas only)

[85580](#) Enabled working area functionality (Santos only)

[85568](#) Enabled working area functionality (Origin only)

[85547](#) Update URL for Santos Assets web map base layer (Santos only)

[85501](#) Modified Coal Summary screen (Origin only)

dbMap/Web - General

[85391](#) Remarks now available for Well test interpretations

[85123](#) Improved performance of viewing Records Management items linked to seismic surveys and lines

[84987](#) Diagrams and help about directional survey grid convergence angles added to the data loading template

[85124](#) GIS groups list now includes column to show if group is available on web maps

[85471](#) Indexes added to improve speed of deleting RM records

[85010](#) Interactive Well test Gradient Survey diagnostic tool added

[84945](#) Lithology is now available on the Well / Samples screen

[85218](#) Records Management Bulk edit wizard now supports editing transmittal number and received date

[85354](#) Third party library security updates

[85266](#) Well list tree filter now supports filtering by Operator

[85009](#) Well Multi Test Chart added

Detailed Release Notes Summary dbMap/Web 2024.4

Bug Fixes

dbMap/Web - Client

- [85298](#) RM performance improvements for users with restricted access (SKK Migas only)
- [85224](#) Open Land rights are now filtered by land right status (SKK Migas only)
- [85273](#) Seismic and land right spatial security views added (SKK Migas only)
- [85207](#) Petrosys user can now see wells/seismic on the map (SKK Migas only)
- [85200](#) Error launching web map has been fixed (Parex only)
- [85232](#) Land right 'New version' button is now hidden for read-only users
- [85188](#) Work group superuser privileges now supported for users with "." in their name (SKK Migas only)

dbMap/Web - General

- [85489](#) Fixed Attachments option on the Area reference screen
- [85419](#) Fixed error launching data exchange loaders when logged in as externally authenticated user
- [85270](#) Well production - Production String ID is now visible on the production list, panel and chart
- [85233](#) Improved Advanced Search performance on Wells / Cores / Samples / Continuous Core Analysis
- [85236](#) Data Exchange - Formation Tops - Loader correctly reads all columns
- [85240](#) Import - Well headers - Example template column names are now consistent with the user interface
- [83721](#) Filter by Query now support runtime parameter values containing single quotes
- [81597](#) Data loaders do not set row metadata columns to blank
- [85255](#) Allow the laboratory on the Analysis Report reference screen to be changed
- [85499](#) CQ Cron performance improvements and other enhancements
- [78626](#) Layout on some well test and core analysis screens improved by reducing white space between labels and values
- [85269](#) Well production chart - Strike through is not aligned when turning off production string zones in Firefox
- [83981](#) Wells Dashboard - Message shown on production tab when a large number of wells are selected

Petrosys Release dbMap/Web 2024.4

Detailed Release Notes

[dbMap - Administration](#) [Enhancements](#)

GeoServer upgraded in dbMap/Web 2024.4 85089

A new version of GeoServer is being deployed alongside the 2024.4 release of dbMap/Web. See the installation guide for details on deploying.

[dbMap - Client](#) [Enhancements](#)

Added a Summary Dashboard (SKK only) 85054

Added a summary dashboard under 'Admin / Summary Dashboard' for SKK Migas.

[dbMap/Web - Client](#) [Enhancements](#)

Land rights are now filtered by work group security in addition to Wells, Seismic etc (SKK Migas only) 85222

The Land right work group security for SKK Migas has been extended to also restrict the Land rights that a user can see in dbMap/Web. Previously all Land rights were visible to all users.

Enabled working area functionality (Santos only) 85580

Working area functionality has been enabled for Santos which allows data to be automatically filtered based on the Permits they are linked to.

Enabled working area functionality (Origin only) 85568

Working area functionality has been enabled for Origin which allows data to be automatically filtered based on the Permits they are linked to.

Update URL for Santos Assets web map base layer (Santos only) 85547

The URL to the Santos Assets base layer has been updated for the web map.

Modified Coal Summary screen (Origin only) 85501

Updated the 'Wells / Coal Summary' screen to remove sections that are no longer needed and add support for new database columns.

[dbMap/Web - Client](#)

[Bug Fixes](#)

RM performance improvements for users with restricted access (SKK Migas only) 85298

For SKK Migas, the performance of the Records Management list and panels has been significantly improved when a user has restricted access based on Land right work groups. Previously getting a list of RM items could timeout, and showing the RM item panel could take 15 seconds. Now it only takes a few seconds.

Open Land rights are now filtered by land right status (SKK Migas only)

85224

For SKK Migas, the Land right security work group PS_OPEN_AREAS now uses the Land right status to determine if a Land right is "Open" or not. Previously it was using the Land right type.

Seismic and land right spatial security views added (SKK Migas only)

85273

The following database views which incorporate land right work group security with spatial data have been created for SKK Migas:

- PETROSYS_SEIS_LINE_S
- PETROSYS_SEIS_LINE_R
- PETROSYS_SEIS_LINE_C
- PETROSYS_SEIS_LINE_V
- PETROSYS_PERMIT

These views replace ones previously owned by GEOSERVER and are now owned by PETROSYS.

Petrosys user can now see wells/seismic on the map (SKK Migas only)

85207

With the Land right work group security in place at SKK Migas, the Petrosys database user was not able to see wells or seismic data on the dbMap/Web map. This has been fixed.

Error launching web map has been fixed (Parex only)

85200

There was an issue with some Parex specific configuration which resulted in an error message being displayed when launching the web map. This has been fixed with the map now displaying without error messages.

Land right 'New version' button is now hidden for read-only users

85232

For client SKK Migas who has special security the 'New version' button on the Land rights screen was visible for users who only have read-only access. This has been fixed so the 'New version' button is now hidden.

Work group superuser privileges now supported for users with "." in their name (SKK Migas only)

85188

Work group Superuser privileges can now be granted to users with a "." in their Oracle database username at SKK Migas. Previously this resulted in user not being able to see any Records Management data.

[dbMap/Web - General](#)

[Enhancements](#)

Remarks now available for Well test interpretations

85391

The Remarks field has been added to the Well test interpretation screen.

Improved performance of viewing Records Management items linked to seismic surveys and lines

85123

The display of Records Management items linked to a seismic line or a seismic survey is now faster due to optimised queries being used.

Diagrams and help about directional survey grid convergence angles added to the data loading template

84987

A Help tab has been added to the Directional survey example input file, with diagrams and text describing directional surveys, grid convergence angles and how they are used in Petrosys.

GIS groups list now includes column to show if group is available on web maps 85124

The GIS groups list now includes an additional column to show which groups are enabled for display on the web map.

Indexes added to improve speed of deleting RM records 85471

Database indexes have been added to significantly improve the performance of deleting Records Management data, particularly when done by the RM Crawler as part of cleaning up files that have been removed from the cataloging process.

Interactive Well test Gradient Survey diagnostic tool added 85010

A new Well test Gradient Survey chart has been added with the ability to create diagnostic interpretations of pressure data. The chart can plot TVD subsea depths vs Pressure or Temperature and displays inline underneath the Gradient survey test data.

From the inline chart you can create new or edit existing diagnostics for the pressure data which allows you to:

- Create lines of best fit for Oil, Gas and Water based on the pressure data by interactively selecting points.
- Automatically compute the Oil/Water, Gas/Oil or Gas/Water contacts from the intersections of the lines of best fit.
- Enter Remarks, Datum depth and automatically compute p@datum.
- Save the data as a well test interpretation.

Saved diagnostic interpretations can also be displayed on the inline chart.

Lithology is now available on the Well / Samples screen 84945

Lithology and percentage details are now shown on the Well / Samples screen.

Records Management Bulk edit wizard now supports editing transmittal number and received date 85218

The Records Management Bulk edit wizard has been updated so it now also supports editing transmittal number and received date.

Third party library security updates 85354

Upgraded third party libraries to get the latest security updated.

Well list tree filter now supports filtering by Operator 85266

The Well list tree filter now supports filtering by Operator for clients who do not have a Permit Operator filter. For Santos there is both an Original Operator and Current Operator filter.

Well Multi Test Chart added 85009

A new Multi Test Chart option has been added for Well tests. The chart plots TVD subsea depths vs Pressure for the following well test types:

- RFT
- Pressure Tests
- Gradient Surveys
- MPLT

It also has the option to display Perforations and Isolations.

The chart can be viewed inline and refreshes for each well as selected, or it can be popout in a separate static window.

Fixed Attachments option on the Area reference screen 85489

When pressing the 'Attachments' button on the 'Admin / Reference Tables / PPDM / General Reference / Area' screen, the page was reloading instead of opening the attachments screen. This has been fixed so the attachment screen now launches.

Fixed error launching data exchange loaders when logged in as externally authenticated user 85419

Spreadsheet data loaders now support running when a user is externally authenticated. Previously normally dbMap/Web functionality would work but launching data loaders would result in an error.

Well production - Production String ID is now visible on the production list, panel and chart 85270

The Production String ID column has been added to the Well Production list and the Production string field on the panel. The String ID is also now visible in the title, legend on the Production chart when the show chart by Production string option is selected.

Improved Advanced Search performance on Wells / Cores / Samples / Continuous Core Analysis 85233

Improved the performance when searching for Continuous Core Analysis records via advanced search under 'Wells > Cores > Samples > Continuous Core Analysis'.

Data Exchange - Formation Tops - Loader correctly reads all columns 85236

Spreadsheet data loader templates that had been modified could sometimes result in the final column of data in the spreadsheet not being read. This functionality has been update to be more robust in detecting the last column of data.

Import - Well headers - Example template column names are now consistent with the user interface 85240

The Well header import example input file now has column names that are consistent with the Well header panel. e.g. Geological province is now Basin.

Filter by Query now support runtime parameter values containing single quotes 83721

Data selection queries in dbMap/Web can be written to allow parts of the query to be entered at runtime - for example to select a value from a lookup list. When running these queries if the entered parameter included a single quote it could cause the query to become invalid. This functionality has been updated to correctly process input data that includes single quotes.

Data loaders do not set row metadata columns to blank 81597

Fixed a bug that was causing row metadata values to be blank if the column was included in the loaded template but not populated.

Allow the laboratory on the Analysis Report reference screen to be changed 85255

Previously the Laboratory listed against an analysis report was not able to be changed easily through the user interface. The Analysis report reference screen and data loaders have been updated to allow the Laboratory to be changed.

CQ Cron performance improvements and other enhancements 85499

The Confidence/Quality Cron job has had the following enhancements

- Performance has been significantly improved. In one case, finding the list of wells that had CQ out of sync has gone from 7 hours down to a couple of seconds.
- Fixed a problem when more than 4000 wells were out of sync, none of them would be processed.
- The log data written to the database now reports how many objects have been processed as it progresses, so you can query the progress in real time.
- Database errors that occur are now reported in the log.

Layout on some well test and core analysis screens improved by reducing white space between labels and values

78626

On some of the Well Test and Core Analysis screens there was a large gap between the labels and data fields. This could sometimes make it difficult to see which label lines up with which data value. The layout has been improved by reducing the gap between the labels and data fields.

Well production chart - Strike through is not aligned when turning off production string zones in Firefox

85269

When running the production chart on a FireFox web browser, when series of data were turned off a strike would appear above the text rather than through the text to indicate the series was turned off. The strike is now correctly going through the text when running on Firefox web browsers.

Wells Dashboard - Message shown on production tab when a large number of wells are selected

83981

The Wells Dashboard has been updated so if a user selects more than 2000 wells, a message is shown on the production chat rather than trying to display data for all of the wells.

Detailed Release Notes Summary dbMap/Web 2024.3.1

Enhancements

dbMap/Web - Client

[84508](#) Support added for security by land right work groups (SKK Migas only)

dbMap/Web - General

[85068](#) Added Government ID to Wells common field search

Detailed Release Notes Summary dbMap/Web 2024.3.1

Bug Fixes

dbMap/Web - Client

[84714](#) The Indonesia map extent has been updated (SKK Migas only)

dbMap/Web - General

[85060](#) Mapping - Permits layer only shows current permits by default

[85101](#) Well log viewer: Fixed crash when filling to the same curve in both directions

Petrosys Release dbMap/Web 2024.3.1

Detailed Release Notes

[dbMap/Web - Client](#) [Enhancements](#)

Support added for security by land right work groups (SKK Migas only)

84508

Support has been added for setting up database user security by Land right work groups. This has only been implemented to SKK Migas.

The new Admin/Security/Work Groups option is available to create groups of Land rights, and assign access to database users to restrict which Wells, Seismic Surveys, Seismic Lines and Records Management data can be seen.

The following three standard work groups are also delivered, which do not have Land rights assigned:

- PS_OPEN_AREAS - Gives access to objects that have Land rights defined as "Open".
- PS_SUPERUSERS - For superusers with access to all objects.
- PS_UNASSIGNED_OBJECTS - Gives access to objects that do not have a Land right assigned.

[dbMap/Web - Client](#)

[Bug Fixes](#)

The Indonesia map extent has been updated (SKK Migas only)

84714

The bounding box used for the 'Indonesia' map extent has been reduced to prevent surround areas being shown. The exact map display is dependent on screen dimensions and available zoom levels on the base map. This may result in surrounding areas still being shown.

[dbMap/Web - General](#) [Enhancements](#)

Added Government ID to Wells common field search

85068

Government ID is now included when using the Wells 'Search common fields' filter.

[dbMap/Web - General](#)

[Bug Fixes](#)

Mapping - Permits layer only shows current permits by default

85060

Fixed a bug causing all permits to be shown by default when the user interface indicated that only current permits were being shown. The map and interface are now consistent and only current permits are shown by default.

Well log viewer: Fixed crash when filling to the same curve in both directions

85101

In previous versions of the Well Log Viewer, an "out of memory" error would occur if you chose to fill between curves in both directions. This has now been fixed, and a circular reference check has been added to warn of this condition.

Detailed Release Notes Summary dbMap/Web 2024.3

Enhancements

dbMap/Web - Administration

[84355](#) GeoServer upgraded in dbMap/Web 2024.3

dbMap/Web - Client

[84225](#) Reservoir summaries TVD values are automatically computed when importing or editing (Santos only)

[84520](#) Auto load all data lists (Parex only)

[84418](#) Well - Liquid sample analysis - Summary report option has been added (Santos only)

[84735](#) Records Management Tree filter and default list columns have been changed (SKK Migas only)

[84736](#) Remarks column has been removed from the GIS list (SKK Migas only)

[84734](#) Seismic Surveys Tree filter and default list columns have been changed (SKK Migas only)

[84733](#) Wells tree filter and default list columns have been changed (SKK Migas only)

[84665](#) Application name changed to reflect internal branding (SKK Migas only)

[84712](#) Map default layer order has been changed (SKK Migas only)

[84688](#) Production Chart options are now conditionally shown based on roles (SKK Migas only)

[84685](#) Removed Seismic Line Receiver, CMP and Vessel layers from the Map (SKK Migas only)

[84623](#) New Well Core image screen available for Santos

[83994](#) Working Area has been enabled (Medco only)

[84732](#) World extent has been removed from Map (SKK Migas only)

dbMap/Web - General

[84400](#) "Fracture" label on Production Charts is now "Fracture Stimulation"

[78791](#) Attachments option enable on all screens

[44760](#) The Metric/Imperial setting is now remembered between sessions

[80748](#) Added the ability to filter roles for database users

[84680](#) Label changed of Well header 'Measured depth' field to 'Deepest TD'

[84722](#) DMS coordinates are now displayed to 3 decimal places

[78340](#) Record metadata is now shown new style screens

[84429](#) RM Catalog Storage path in advanced search is now treated as text

[84519](#) Plot name has been added as an optional column to Wells

[84698](#) Added 'See more' button to 'Contained by' tab to view the containing item

[83993](#) Added Download and Well Log Viewer options to curve section of Well Log Browser

[84526](#) Added option to filter Records Management by Asset type

[84681](#) Added option to open Records Management Content and Related Items lists in a new window

[84699](#) Added Preview column to Records Management

[84274](#) Added reference screens for R_TEST_RESULT, R_HOLE_CONDITION and R_FACILITY_STATUS

[84591](#) Added Related Items to Records Management

[84517](#) Added Seismic Line acquisition segment screen

[83982](#) Added Summary Report support to the Well Checkshots screen

[84555](#) Added support for previewing XLSM files

[81812](#) Column widths are calculated when adjusting visible columns in the grid

[84357](#) Mapping - Added dedicated layers for Cegal GIS groups

[84618](#) Records Management Item screen - File size & File last updated fields for web links now display if populated

[84762](#) Records Management now supports previewing AGS files as text files

[84486](#) RM - Generic Attributes

[84719](#) RM data loading performance improved

[84703](#) Save Selection list option added to relevant child screens

[84347](#) The RM Catalog button has been moved to be easier to find

[84818](#) Well Log Browser sections now resize when other sections are collapsed

[84608](#) Well production string panel is now available for all clients

Detailed Release Notes Summary dbMap/Web 2024.3

Bug Fixes

dbMap/Web - Client

- [84481](#) Directional survey CQ rule to check survey company invalid for PPDM3.9 clients
- [84566](#) Wells / Well Tests - Formation integrity tests are not listed (Origin only)

dbMap/Web - General

- [84815](#) dbMap/Web - Wells - PNG94 geographic CRS is now available for selection
- [84511](#) Improved performance of loading CQ information on all panels
- [83761](#) Fixed issue displaying previously hidden and removed user selected layer on Map
- [83424](#) Added filtering by relationship type in Wells / Relationships advanced search
- [84841](#) Added units to Map Well Production popup
- [84997](#) CQ - Data quality was not always recomputed for all objects after a rule had been changed
- [81742](#) CQ - Data quality was not computed for wells without a surface location
- [84239](#) Fixed an error when loading a generic chart from a Directional Survey
- [84592](#) Fixed an issue with stored lookup queries where characters in keys were being escaped
- [84711](#) Fixed an issue with Well advanced search when searching using multiple test types
- [83822](#) Fixed RM Catalog Permit tree filter not filtering correctly
- [84875](#) Improved performance of Well log browser
- [84753](#) Improved speed when using a stored query
- [84363](#) Made an error in the Core Analysis - RCA data loader caused by a blank core number more descriptive
- [78824](#) SEIS_RECVR_MAKE reference screen has been added
- [84911](#) Well log viewer: Fixed color picker
- [84748](#) Well Shows - Plot symbol correctly displayed
- [84643](#) Wells / RM Catalog - Category Advanced search 'one of' criteria now correctly filters the list

Petrosys Release dbMap/Web 2024.3

Detailed Release Notes

[dbMap/Web - Administration](#) [Enhancements](#)

GeoServer upgraded in dbMap/Web 2024.3

84355

A new version of GeoServer is being deployed alongside the 2024.3 release of dbMap/Web. See the installation guide for details on deploying.

[dbMap/Web - Client](#) [Enhancements](#)

Reservoir summaries TVD values are automatically computed when importing or editing (Santos only)

84225

When importing or editing Reservoir summaries, the TVD values are now automatically computed.

Auto load all data lists (Parex only)

84520

All data lists now automatically load all records when entering a data type screen for the first time.

Well - Liquid sample analysis - Summary report option has been added (Santos only)

84418

Summary report option has been added to the Liquid sample analysis list.

Records Management Tree filter and default list columns have been changed (SKK Migas only)

84735

The Records Management tree filter has been changed, moving Basin and Land right up the nodes.

Media type, Country, Source, Digital format, Quality, Confidence, Catalogued, and Storage path nodes have been removed.

Year document produced node has been added.

The default list columns have been changed.

Remarks column has been removed from the GIS list (SKK Migas only)

84736

Remarks column has been removed from the GIS list

Seismic Surveys Tree filter and default list columns have been changed (SKK Migas only)

84734

Source, Quality, and Confidence have been removed from the Seismic survey tree filter, Acquisition year has been added.

Default list columns have been changed.

Wells tree filter and default list columns have been changed (SKK Migas only)

84733

Tree filter nodes have been re-ordered, Current status, Primary source, Country, Well zone, Quality, and Confidence nodes have been removed, Spud year, Environment type, and Profile type nodes have been added. Default list columns have been changed.

Application name changed to reflect internal branding (SKK Migas only)

84665

The application name shown on the login screen and title bar of the application has been updated to reflect the internal branding used by SKK Migas.

Map default layer order has been changed (SKK Migas only)

84712

The default layer order on the Map has been changed to have Land Rights, Seismic, Wells, then Fields at the top

Production Chart options are now conditionally shown based on roles (SKK Migas only)

84688

Production Chart options are now only shown to admin users

Removed Seismic Line Receiver, CMP and Vessel layers from the Map (SKK Migas only)

84685

Seismic Line Receiver, CMP and Vessel layers have been removed from the Map

New Well Core image screen available for Santos

84623

Underneath the well header in the 'Core & Analysis' section there is a new 'Core Images' button available for Santos that shows the Records Management entries with Categories related to Core data.

Working Area has been enabled (Medco only)

83994

The Working Area filter has been enabled for Medco.

World extent has been removed from Map (SKK Migas only)

84732

The World extent has been removed from the Map.

dbMap/Web - Client

Bug Fixes

Directional survey CQ rule to check survey company invalid for PPDM3.9 clients

84481

The directional survey CQ rule query that checks for existence of a survey company now works for clients using the PPDM3.9 database model. Previously this rule would always fail.

Wells / Well Tests - Formation integrity tests are not listed (Origin only)

84566

Formation integrity tests are not listed on the "Wells / Well Tests" screen due to the dedicated "Wells / FIT" option

dbMap/Web - General

Enhancements

"Fracture" label on Production Charts is now "Fracture Stimulation"

84400

The Production Chart Event option formally labeled "Fractures" has been changed to now be "Fracture Stimations"

Attachments option enable on all screens

78791

The 'Attachments' option is now available on all screens by default.

The Metric/Imperial setting is now remembered between sessions 44760

Previously, the Metric/Imperial setting would reset each time you log out and log in, now it remembered between sessions.

Added the ability to filter roles for database users 80748

List filters have been added to the Roles lists on the Database user management page

Label changed of Well header 'Measured depth' field to 'Deepest TD' 84680

In the depths section of the well header screen there was a field named 'Measured depth'. This has been renamed to 'Deepest TD' to clarify the purpose of the values stored in that field.

DMS coordinates are now displayed to 3 decimal places 84722

DMS coordinates are now shown to 3 decimal places in view mode, making it consistent with edit mode.

Record metadata is now shown new style screens 78340

Creation and update metadata is now shown at the bottom of new style screens

RM Catalog Storage path in advanced search is now treated as text 84429

The RM Catalog (e.g. Wells / RM Catalog) Storage path field is now treated as text instead of a lookup, making it consistent with how Storage path is treated in the Records Management advanced search

Plot name has been added as an optional column to Wells 84519

Plot name has been added as an optional column in the Wells list, hidden by default.

Added 'See more' button to 'Contained by' tab to view the containing item 84698

A 'See more' button has been added to the 'Contained by' tab of Records Management, which opens the containing item in a new window.

Added Download and Well Log Viewer options to curve section of Well Log Browser 83993

Download and Well log viewer options have been added to the Well Log Curves section, making it easier to download and view the relevant log.

Added option to filter Records Management by Asset type 84526

A new tree filter option has been added to Records Management to filter items by Asset type. The filter has two levels, the first level is 'Digital asset' and 'Physical asset', the 'Digital asset' option has 'Digital document' and 'Web link' sub-options, and the 'Physical asset' option has 'Physical item' and 'Physical item content' options.

Added option to open Records Management Content and Related Items lists in a new window 84681

A 'Show all' button has been added to the Records Management Content and Related Items tabs which opens a new window with the items in the list shown.

Added Preview column to Records Management 84699

A new column has been added to Records Management which allows you to Preview an item if it is able to be previewed.

Added reference screens for R_TEST_RESULT, R_HOLE_CONDITION and R_FACILITY_STATUS

84274

Test result (R_TEST_RESULT), Hole condition (R_HOLE_CONDITION), and Facility status (R_FACILITY_STATUS) reference screens have been added under PPDM / General reference.

Added Related Items to Records Management

84591

A new tab labeled 'Related Items' has been added to Records Management, showing a list of RM items that are attached to the current item, or have the current item attached to them.

Added Seismic Line acquisition segment screen

84517

A Seismic line acquisition button has been added to Seismic lines, listing the acquired line segments.

Added Summary Report support to the Well Checkshots screen

83982

The Wells / Checkshots screen now has support for a Summary Report. If a report named 'Summary Report: Checkshot survey' is available, the option will be present.

Added support for previewing XLSM files

84555

XLSM files can now be previewed in Records Management.

Column widths are calculated when adjusting visible columns in the grid

81812

Column widths are automatically adjusted after adding or removing a column from a list

Mapping - Added dedicated layers for Cegal GIS groups

84357

A 'Cegal' layer group is now presented on the map if GIS groups exist in the database with 'cegal' (case insensitive) in the group name.

Records Management Item screen - File size & File last updated fields for web links now display if populated

84618

If a Records Management item is a web link, previously the File size and File last updated fields would not be displayed. Now if the fields are populated for web links they are displayed on the screen.

Records Management now supports previewing AGS files as text files

84762

AGS files used in the United Kingdom to exchange geotechnical and geoenvironmental data. Records Management now supports previewing the text content of these files.

RM - Generic Attributes

84486

Records management has been extended to support a generic set of attributes that are assigned to an item based on the items type, category and subcategory. Attributes are listed on the RM header and the "RM / Attributes" screen.

RM data loading performance improved

84719

The performance of loading Records Management data has been improved with the addition of two database indexes.

Save Selection list option added to relevant child screens

84703

Selection lists, as well as the ability to save them, have been enabled on child panels that relate to a top level panel, e.g. You can select and save a list of Wells from Permits / Wells, then view that list on the Wells screen.

The RM Catalog button has been moved to be easier to find 84347

The RM Catalog button has been moved to be easier to find. It is now the first button where available, except for Wells, where it can be found in the 'Records Management' button group.

Well Log Browser sections now resize when other sections are collapsed 84818

When a Well Log Browser section is collapsed/minimized, the other sections now resize to use the newly available space.

Well production string panel is now available for all clients 84608

The Production string panel has been made available for all clients. This information can then be linked to production data to capture more fine grained details, which can then be used to filter data shown on production plot.

dbMap/Web - General

Bug Fixes

dbMap/Web - Wells - PNG94 geographic CRS is now available for selection 84815

The PNG94 geographic CRS is now able to be assigned to dbMap wells.

Improved performance of loading CQ information on all panels 84511

Database and application changes have been implemented to improve the performance of loading CQ information shown on certain panels; for example, the well header.

Fixed issue displaying previously hidden and removed user selected layer on Map 83761

Fixed an issue on the Map where if a User selection layer is hidden (unchecked) and then removed, when it's re-added and shown the layer would never load.

Added filtering by relationship type in Wells / Relationships advanced search 83424

Filtering by relationship type has been added to the Wells / Relationships advanced search, treated as a lookup.

Added units to Map Well Production popup 84841

Units have been added to the table in the Well production popup on the Map.

CQ - Data quality was not always recomputed for all objects after a rule had been changed 84997

An issue has been fixed where in some cases if you created a new CQ rule or modified an existing one it did not trigger the system to recompute CQ for all objects. This would occur for new dbMap clients or data types that had not previously had CQ setup or when updating the "Rule purpose" or "Use condition desc" values of the rule.

CQ - Data quality was not computed for wells without a surface location 81742

If you create a new dbMap well without a surface location specified the data quality is now computed straight away. Previously the quality status would be set to UNKNOWN and pressing the "Recompute quality" button did nothing.

Fixed an error when loading a generic chart from a Directional Survey 84239

An error which occurred when charting Directional Survey Points has been fixed.

Fixed an issue with stored lookup queries where characters in keys were being escaped

84592

An error caused by characters in the keys field of a stored lookup being escaped has been fixed. The keys field is no longer escaped, allowing use of functions such as TO_CHAR.

Fixed an issue with Well advanced search when searching using multiple test types

84711

Fixed an issue with Well advanced search when searching using multiple test types, where the lookup would always show '0 items selected' and the Wells weren't being filtered as expected.

Fixed RM Catalog Permit tree filter not filtering correctly

83822

The RM Catalog Permit tree filter now correctly filters the results to only show items linked to the selected permits.

Improved performance of Well log browser

84875

The performance of the Well log browser option has been improved. Where previously it could take 30 seconds to load and in some cases even time out, it now loads in about 5 seconds.

Improved speed when using a stored query

84753

Improved performance when using Stored queries on panels with lots of records such as Records Management.

Made an error in the Core Analysis - RCA data loader caused by a blank core number more descriptive

84363

Previously, if you had a blank core number, the Core Analysis - RCA data loader would show a misleading error mentioning SOURCE.

Now the error displayed tells you which columns must be populated, and lists the ones that aren't.

SEIS_RECVR_MAKE reference screen has been added

78824

SEIS_RECVR_MAKE reference screen has been added to Reference Tables under PPDM / General Reference

Well log viewer: Fixed color picker

84911

In previous versions, the color picker of the Well Log viewer wasn't displayed correctly when expanded. This has now been fixed.

Well Shows - Plot symbol correctly displayed

84748

Fixed a bug causing the plot symbol on the "Wells / Well Shows" screen to overlap the input field when the panel was in edit mode.

Wells / RM Catalog - Category Advanced search 'one of' criteria now correctly filters the list

84643

Fixed an issue in the Wells / RM Catalog Advanced search where the Category multi-lookup (one of), wouldn't reflect the selected options, and would incorrectly find 0 wells.

Detailed Release Notes Summary dbMap/Web 2024.2.1

Bug Fixes

dbMap/Web - General

[84359](#) Mapping - Fixed issue reading GeoServer configuration

Petrosys Release dbMap/Web 2024.2.1

Detailed Release Notes

dbMap/Web - General

Bug Fixes

Mapping - Fixed issue reading GeoServer configuration 84359

Fixed a bug preventing the GeoServer configuration being read causing no data to be shown on the map.

Detailed Release Notes Summary dbMap/Web 2024.2

Enhancements

dbMap/Web - Administration

[84245](#) CQ Cron - Enhancements for processing rows with quality out of sync

dbMap/Web - Client

[84088](#) Added "Other Projections" button to well header (Parex only)

[84125](#) Directional Survey Loader - Updated default loader options (Santos only)

[84152](#) Added custom well symbols (Santos only)

[84110](#) Checkshot Surveys - Display MD and TVD SRD in feet (Medco only)

[84124](#) Mapping - Added OZ SEEBASE 2021 layers (Inpex only)

dbMap/Web - General

[31607](#) Added support for Single Sign On

[84006](#) Production Chart - Data report added to production charts showing data for multiple wells

[84005](#) Generic chart button removed from Perforations

[84008](#) Production Chart - Series selection in production chart is now honoured when adding more series

[84062](#) Added Production chart Top 5 Wells / Well Zones options to rank by total production

[84171](#) Production Chart Report Frac section relabeled to Fracture Stimulations

[84070](#) Reset zoom option added to Perforation Diagram

[84037](#) Perforation Diagram - Added Metric/Imperial button to toggle units

[84041](#) Production Charts - Added an option to view top wells and well zones by water production

[84237](#) Wells / Rig - Optional columns added to the grid

[84249](#) Production Charts with multiple wells now have a message indicating how the wells were selected

[84130](#) Compute TVDs / BH - Computation will not fail if directional survey points do not exist

[84113](#) Well Header - Increased decimal places for DMS coordinates when editing

[84032](#) PPDM Rules reference screen - Source, Purpose and Use condition description added as columns to the list

[83983](#) Directional Survey Autosync - Added directional survey compute option if the well surface location is changed

[84132](#) Additional data screens supported when using the PPDM 3.9 data model

[84142](#) Attachments option added to the Other Well Tests screen

[84014](#) Circulation details are shown on the Records Management panel

[84068](#) Production by Field/Basin charts now have a View Well Zones list option

[84066](#) Production Chart Report - Added activity remark to the activities grid

[84015](#) Records Management - Added functionality to allow physical items to be borrowed and returned

[84024](#) Records Management - Retention period has been added to category and sub-category reference screens

[84061](#) Records Management now supports previewing Shapefiles

[84203](#) Reference screen added for the R_WELL_CHEMICAL_ALIAS table

[84025](#) Retention period is now shown read-only on the Records Management header screen

[84339](#) Mapping - RM Catalog and Production options available when selecting a Well Production map feature

Detailed Release Notes Summary dbMap/Web 2024.2

Bug Fixes

dbMap - Client

[84166](#) CQ - Checkshots no longer missing from well rolled up result (Santos only)

dbMap/Web - Administration

[83573](#) CQ Cron - processing all well headers no longer includes PLDB Drilling opportunities

dbMap/Web - Client

[84199](#) Frac - Total dirty volume values now displayed correctly

dbMap/Web - General

[84009](#) Production Charts - Series labels can be used to enable/disable series

[82572](#) Well Header - Coordinate fields are not updated due to conversion between DMS and Decimal Degrees

[84074](#) dbMap/Web - Wells - MAGNA-SIRGAS geographic CRS is now available for selection

[84067](#) Production Chart Show Events section is no longer shown when plotting data versus cumulative production

[84091](#) Production Chart Top Wells/Well Zones options are more descriptive

[84039](#) Well Production Cumulative Chart now only shows data up to last production

[84187](#) Well Formation Tops Data loader merge rule "Replace by source and formation type" correctly replaces existing Formation Tops

[84083](#) Comments have been added to the Row Quality column in the Well Formation Top template

[84188](#) Directional survey geometries not flagged as out of sync when well BH or TD TVD is computed

[84250](#) Production chart tooltip now stays on the screen

[84162](#) Compute TVDs / BH - Directional Survey Offset Computation failures no longer prevents subsequent computations for a vertical well

[84243](#) Changing the depth datum or elevation now prompts for the directional survey geometries to be re-computed

[84069](#) View Well Zones / Basins / Fields button on 'Production by' Production charts now shows correct list when when charting by Top Wells

[83869](#) Well Header Data Loader now correctly loads data from sheets missing a units row

[84053](#) Well log browser - Added support for file path translation to well log viewer

Petrosys Release dbMap/Web 2024.2

Detailed Release Notes

dbMap - Client

Bug Fixes

CQ - Checkshots no longer missing from well rolled up result (Santos only)

84166

For Santos only, the CQ rolled-up result for wells did not include details from checkshots. This has been fixed.

dbMap/Web - Administration

Enhancements

CQ Cron - Enhancements for processing rows with quality out of sync

84245

The CQ cron job has been improved to accurately determine and process rows with quality that are out of sync. Previously it would only pick up records that had been changed in the last 24 hours. It now uses the same method as the dbMap/Web panels, which is done using the PS_IS_RECORD_OUT_OF_SYNC database function.

In addition to this, it is now possible to configure quality rules to include checking for updates to child tables when determining if the quality is out of sync. e.g.

If you have a rule that checks for the existence of well log data, you can configure it to also check for updates to the WELL_LOG table when determining if the quality out of sync. To do this:

1. Go to Admin/Reference tables/PPDM/General reference/Rules
2. Select the appropriate rule that is referencing the child table
3. Press the Rule Detail button
4. Add a new record
5. Select the UWI column for the PPDM38.WELL_LOG table. Note that the column selected is important, as it is used to join to the well.
6. OK to save the record
7. Done! The quality out of sync check will now include checking for updates to the WELL_LOG table,

dbMap/Web - Administration

Bug Fixes

CQ Cron - processing all well headers no longer includes PLDB Drilling opportunities

83573

When running the cron job to update CQ for all wells it was incorrectly including PLDB drilling opportunities, which are also stored in the WELL table. It now only processes actual wells.

dbMap/Web - Client

Enhancements

Added "Other Projections" button to well header (Parex only)

84088

Added an "Other Projections" button to the well header to show the well location in related projections.

Directional Survey Loader - Updated default loader options (Santos only)

84125

The default options on the directional survey loader have been changed to:

- Merge rule - Replace all by well
- Directional surveys offsets/TVDs - Enabled
- Well TD TVDs - Enabled

Added custom well symbols (Santos only)

84152

Custom well symbols have been added to the Santos configuration.

Checkshot Surveys - Display MD and TVD SRD in feet (Medco only)

84110

The "MD" and "TVD SRD" checkshot survey grid columns have been changed to display in feet for Medco.

Mapping - Added OZ SEEBASE 2021 layers (Inpex only)

84124

Added OZ SEEBASE 2021 (Geognostics) WMS layers as overlays on the map. The layers are hosted by Geoscience Australia.

dbMap/Web - Client

Bug Fixes

Frac - Total dirty volume values now displayed correctly

84199

Total dirty volume values are now correctly shown on the Well treatment Frac Design and Actual tabs. Previously some values would appear blank when they shouldn't be.

dbMap/Web - General

Enhancements

Added support for Single Sign On

31607

dbMap/Web now supports Single Sign On if clients are using On-Premises Active Directory.

Production Chart - Data report added to production charts showing data for multiple wells

84006

The "View Report Data" option has been added to production charts that show data across multiple wells (Multi-well; Basin; Field; Well Zone). The content of the report can be changed by updating the PUBLIC or creating a user specific report with the name "Summary Report: Production" for the WELL, BASIN, FIELD and WELL_ZONE data types.

Generic chart button removed from Perforations

84005

The generic chart button has been removed from the Perforations list.

Production Chart - Series selection in production chart is now honoured when adding more series

84008

The selected series in the chart legend will now keep their checked/unchecked state when adding/removing series.

Added Production chart Top 5 Wells / Well Zones options to rank by total production

84062

The Production Chart Top Wells and Top Well Zones charts now have options to rank by total gas/oil/water production.

Production Chart Report Frac section relabeled to Fracture Stimulations

84171

Production Chart Report Frac section has been relabeled to Fracture Stimulations

Reset zoom option added to Perforation Diagram 84070

A Reset Zoom button has been added to the Perforation Diagram.

Perforation Diagram - Added Metric/Imperial button to toggle units 84037

A "Metric / Imperial" button has been added to the perforation diagram to toggle the display units.

Production Charts - Added an option to view top wells and well zones by water production 84041

Added Average yearly water production, and Total water production to Top wells and Top well zones options in the Production Charts.

Wells / Rig - Optional columns added to the grid 84237

Elevation reference datum; Depth datum; Kelly bushing elevation; Rotary table elevation; Derrick floor elevation; and Other elevation, have been added to the "Wells / Rig" grid as optional columns.

Production Charts with multiple wells now have a message indicating how the wells were selected 84249

Production Charts with multiple wells (from the wells list, or Production by Basins/Fields/Well Zones), now have a message indicating where the selection comes from, above the buttons in the bottom right of the screen.

Compute TVDs / BH - Computation will not fail if directional survey points do not exist 84130

Removed an error that was causing the computations to incorrectly fail if directional survey points did not exist for a well.

Well Header - Increased decimal places for DMS coordinates when editing 84113

DMS coordinates have been increased to three decimal places when editing. This is to prevent rounding issue when converting between DMS and Decimal Degrees.

PPDM Rules reference screen - Source, Purpose and Use condition description added as columns to the list 84032

On the PPDM rules reference screen, additional columns have been added to the list to make it easier to find relevant rules.

Directional Survey Autosync - Added directional survey compute option if the well surface location is changed 83983

The "Directional survey offsets/TVDs" options has been relabeled "Directional surveys offsets, TVDs and geometries" to reflect that the geometry is also updated by this option.

When editing the well header, the user can now select the "Directional surveys offsets, TVDs and geometries" option if the wells surface location has been changed.

The "Directional surveys offsets, TVDs and geometries" option is now available when launching computations using the "Compute TVDs / BH" option on the well header.

Additional data screens supported when using the PPDM 3.9 data model 84132

Additional data screens are now supported for clients using the PPDM 3.9 data model:

- Wells / Well details / Rig
- Wells / Well details / Pad
- Wells / Well details / Support Facilities
- Wells / Well details / Business Associates

- Wells / Drilling & Completions / Horizontal Drills
- Wells / Drilling & Completions / Mud Weights
- Wells / Drilling & Completions / Activities
- Core & Analysis / Shows
- Well Tests / RFT
- Well Tests / DST
- Well Tests / Pressure Tests
- Well Tests / Gradient Surveys
- Well Tests / Sonolog
- Well Tests / LET
- Well Tests / MPLT
- Well Tests / Other tests
- Interpretive / Reservoir summaries
- Wells / Production By / Basin
- Wells / Production By / Field
- Wells / Production By / Well Zone
- Records Management / Facilities
- Facilities / Facility Areas
- Facilities / RM Catalog
- Facilities / Basins
- Admin / Data Exchange / Import / Core Analysis - Adsorption Isotherm
- Admin / Data Exchange / Import / Core Analysis - Desorption
- Admin / Data Exchange / Import / Core Analysis - Gas Composition
- Admin / Data Exchange / Import / Core Analysis - Isotope
- Admin / Data Exchange / Import / Core Analysis - Petrology
- Admin / Data Exchange / Import / Core Analysis - Proximate
- Admin / Data Exchange / Import / Core Analysis - Rock Evaluation
- Admin / Data Exchange / Import / Core Analysis - Ultimate
- Admin / Data Exchange / Import / Core Analysis - Well Samples
- Admin / Data Exchange / Import / Reservoir Summaries
- Admin / Data Exchange / Import / Well Test
- Admin / Data Exchange / Import / Well Test - Gradient Survey
- Admin / Data Exchange / Import / Well Test - MPLT
- Admin / Data Exchange / Import / Well Test - RFT

Attachments option added to the Other Well Tests screen

84142

The attachments option has been added to "Wells / Other Tests" screen.

Circulation details are shown on the Records Management panel

84014

A new 'Circulation' tab has been added to Records Management for physical items, showing the circulation information such as status, checked out by, and due date.

Production by Field/Basin charts now have a View Well Zones list option

84068

A 'Well Zones' button has been added to Production Charts from the Production by Field and Production by Basin lists, which displays a list of the Well Zones associated with the charted wells.

Production Chart Report - Added activity remark to the activities grid

84066

Added activity remark to the activities grid on the production chart report.

Records Management - Added functionality to allow physical items to be borrowed and returned

84015

New 'Borrow' and 'Return' buttons have been added to Records Management, allowing users to Checkout and Check In physical items. These screens also have the ability to add to the selection by scanning barcodes.

Advanced filter options have been added to filter by due date, circulation status, and who has borrowed the item.

Records Management - Retention period has been added to category and sub-category reference screens

84024

A retention period can now be recorded against a Records Management Category and Sub-category. This can be used to help monitor the recommended retention lifetime of Records Management items.

Records Management now supports previewing Shapefiles

84061

Shapefiles catalogued in Records Management can now be previewed without having to download and open in another application. When previewing, a basic map is displayed along with some information on the CRS and bounding box of the data.

Reference screen added for the R_WELL_CHEMICAL_ALIAS table

84203

A reference screen has been added for the R_WELL_CHEMICAL_ALIAS table.

Retention period is now shown read-only on the Records Management header screen

84025

Retention period has been added to the Records Management panel. For digital items it will be on the 'Item' tab, for physical items it will be on the 'Media' tab.

Mapping - RM Catalog and Production options available when selecting a Well Production map feature

84339

The RM Catalog and Production options are now available when selecting a 'Well Production' pie chart on the map.

dbMap/Web - General

Bug Fixes

Production Charts - Series labels can be used to enable/disable series

84009

Fixed a bug on the production charts forcing users to select the checkbox to enable/disable data series on the chart. The series label can now also be selected.

Well Header - Coordinate fields are not updated due to conversion between DMS and Decimal Degrees

82572

Fixed a bug that was causing the well header coordinate fields to be updated due to conversion from DMS to decimal degrees, even if the user had not changed the coordinate value.

dbMap/Web - Wells - MAGNA-SIRGAS geographic CRS is now available for selection

84074

The MAGNA-SIRGAS geographic CRS is now available for selection on the Well header locations tab when editing a well.

Production Chart Show Events section is no longer shown when plotting data versus cumulative production

84067

The "Show Events" section has been removed when plotting data versus a cumulative production option.

For other options, events with no data are now correctly disabled.

Production Chart Top Wells/Well Zones options are more descriptive

84091

The Top 5 Wells/Well Zones options have been renamed from 'Oil/Gas production' to 'Average yearly oil/gas production' to clarify what the wells/well zones are ranked by.

Well Production Cumulative Chart now only shows data up to last production

84039

The Cumulative Production Chart no longer extrapolates data to the end of the year of the last data point, which would previously sometimes display data into the future.

Well Formation Tops Data loader merge rule "Replace by source and formation type" correctly replaces existing Formation Tops

84187

Fixed an issue with the Well Formation tops and Well Reservoir Summary data loaders not deleting existing tops/summaries with some 'Replace all by' merge options.

Comments have been added to the Row Quality column in the Well Formation Top template

84083

The Row quality column heading in the Well Formation Top data loader template now has a comment similar to other data loader templates with a Row quality column

Directional survey geometries not flagged as out of sync when well BH or TD TVD is computed

84188

When using the functionality to compute the directional survey offsets and TVDs along with the well BH location and/or well TD TVD, the GEOM_IN_SYNC flag on the WELL_DIR_SRVS_GEOMS table is now set correctly to Y. Previously it would be set to N after computing the BH or TD TVD.

Production chart tooltip now stays on the screen

84250

The tooltip now stays on the screen, moving underneath the mouse if there's not enough room to the right, keeping the information readable.

Compute TVDs / BH - Directional Survey Offset Computation failures no longer prevents subsequent computations for a vertical well

84162

Fixed an issue preventing other computations from running if the directional survey offset computation fails for a vertical well.

Changing the depth datum or elevation now prompts for the directional survey geometries to be re-computed

84243

The 'Compute TVDs/BH' prompt will now show when the relevant elevation or depth reference is changed.

View Well Zones / Basins / Fields button on 'Production by' Production charts now shows correct list when when charting by Top Wells

84069

Fixed a bug on Production by Well Zones / Fields / Basins Production Charts where the 'View Well Zones / Fields / Basins' button would display a blank list if charting by Top Wells or Top Well Zones. It now correctly shows the Well Zones, Fields, or Basins related to the charted Wells or Well Zones.

Well Header Data Loader now correctly loads data from sheets missing a units row

83869

Fixed an issue with the Well Header data loader where if you don't have a column with units (Headers on row 5, blank row on row 6), no data would be read.

Well log browser - Added support for file path translation to well log viewer

84053

The well log browser (Wells/Well Log Browser) includes the ability to download and view LAS and DLIS files. If the dbMap/Web server was hosted on windows then the viewing of log files did not work. This has been fixed.

Detailed Release Notes Summary dbMap/Web 2024.1

Enhancements

Configuration - Licensing

[83969](#) dbMap/Web 2024.1 licensing - New license file required

dbMap/Web - Administration

[82800](#) GeoServer upgraded in dbMap/Web 2024.1

dbMap/Web - Client

[83811](#) Well symbol added for symbol number 314 (Origin)

[83719](#) Adjusted number of rows we fetch from the database (Parex only)

[83520](#) Reservoir Summaries Data Type added to the Acquisition tab (Santos only)

[83785](#) Default unit mode set to imperial (Parex only)

dbMap/Web - General

[83702](#) Automated recalculation of values - Directional survey screens

[83698](#) Well list has new bulk compute functionality for TVDs, survey offsets and bottom hole locations

[83701](#) Automated recalculation of values - Well header screen

[83703](#) Directional survey loader extended to support automated computing of some values

[83168](#) Directional survey loader spreadsheet template now includes example of using new projected CRS

[83339](#) CQ - Directional Survey - Correction to true north rule now passes if projected CRS is specified

[83542](#) Perforation Diagram showing depths vs dates is now available

[83565](#) Well log viewer: Added control over index/depth graticules

[83252](#) Well log viewer: Added option to reverse FMI gradient

Detailed Release Notes Summary dbMap/Web 2024.1

Bug Fixes

dbMap/Web - Client

- [83764](#) Well header loader now supports loading the well origin (GCS only)
- [83835](#) Well Samples - Derive logger depths and Metric/Imperial buttons now work (Santos only)
- [83760](#) Mapping - Error adding Seismic Surveys to the map (Inpex only)
- [83725](#) Well origin fields have been added to the well header data loading template (Santos)
- [83722](#) Wells / Tests / Period screen has been reinstated (Origin only)

dbMap/Web - General

- [83941](#) Incorrect Easting/Northing and Adjusted X/Y offsets shown when directional survey correction to true north angle was West
- [82655](#) Palynology user interface improvements, including better display order in lists
- [83837](#) Error on Well Sample screen when deriving loggers depths with no base depth has been fixed
- [80834](#) dbMap PPDM3.8 - XREF_TYPE is not populated for new MPLT well tests
- [80232](#) Support facilities other than rigs and pads can now be assigned to a well
- [83182](#) Records Management - Trailing '/' no longer added to Web URLs
- [83291](#) Mapping - Issue where GIS layer could become 'stuck' and not able to be removed from the map has been fixed
- [81038](#) Formation tops loader - Prevent matching formations without formation type when column is populated
- [81146](#) Test group added to Well test type reference screen
- [83807](#) Mapping - Map images can now be saved
- [80538](#) Incorrect user interface was shown when creating a new field via a lookup
- [83707](#) Old Well test data for RFT and other types are now visible in dbMap/Web
- [83268](#) Records Management Wizard - Land right type is now visible in the selection lists
- [79392](#) Some child screens were still shown after parent record was deleted
- [83572](#) The list of data selection queries now correctly includes queries that use database PS_ functions
- [83743](#) Well Directional survey points panel now shows east/west and north/south direction for x/y offsets
- [81456](#) Well Test Loader - Incorrect validation rules were preventing data being loaded
- [83564](#) Wells Advanced Search - It is now possible to search for Frac data filtering by Proppant used

dbMap/Web - PLDB

- [83796](#) PLDB - Error when editing drilling opportunities resolved

Petrosys Release dbMap/Web 2024.1

Detailed Release Notes

[Configuration - Licensing](#) [Enhancements](#)

dbMap/Web 2024.1 licensing - New license file required 83969

To use dbMap/Web 2024.1, a new license file is required. Acquire your license file by logging in to the Petrosys Client Portal or reaching out to Petrosys Support.

[dbMap/Web - Administration](#) [Enhancements](#)

GeoServer upgraded in dbMap/Web 2024.1 82800

A new version of GeoServer is being deployed alongside the 2024.1 release of dbMap/Web. See the installation guide for details on deploying.

[dbMap/Web - Client](#) [Enhancements](#)

Well symbol added for symbol number 314 (Origin) 83811

The new well symbol 314 has been added for Origin, which is now visible on the well header and map.

Adjusted number of rows we fetch from the database (Parex only) 83719

We have changed the number of rows we fetch from the database at a time to 300 for Parex.

Reservoir Summaries Data Type added to the Acquisition tab (Santos only)

83520

Reservoir Summaries data type has been added to the Acquisition tab on the well header.

Default unit mode set to imperial (Parex only) 83785

For Parex, the default unit mode has been changed to imperial.

[dbMap/Web - Client](#)

[Bug Fixes](#)

Well header loader now supports loading the well origin (GCS only) 83764

Well Origin can now be loaded for Well headers using the well headers spreadsheet data loader. This was an issue that only affected client GCS.

Well Samples - Derive logger depths and Metric/Imperial buttons now work (Santos only) 83835

For Santos the Derive logger depths and Metric/Imperial buttons on the Well Sample dialog were not working. This has been fixed.

Mapping - Error adding Seismic Surveys to the map (Inpex only)

83760

Adding 3D seismic surveys to the map would result in an error for Inpex. This has been fixed and Surveys can be successfully added to the map.

Well origin fields have been added to the well header data loading template (Santos)

83725

Well origin fields (UWI, Name, Num) were missing from the Santos well header data loading template and are now available.

Wells / Tests / Period screen has been reinstated (Origin only)

83722

The Well / Test / Period screen has been reinstated after previously being removed.

[dbMap/Web - General](#) [Enhancements](#)

Automated recalculation of values - Directional survey screens

83702

When changes to the Preferred flag, Azimuth, compute method, correction, E/W direction, or CRS of the Directional Survey is changed, a new prompt will show to allow users to recompute Directional survey offsets/TVDs, Formation TVDs, Reservoir summary TVDs and BH TVD & Latitude/Longitude.

When changes to the MD, TVD, inclination, azimuth, x offset, easting, y offset, northing, E/W direction, or N/S direction of the Directional Survey point is changed, a new prompt will show to allow users to recompute Directional survey offsets/TVDs, Formation TVDs, Reservoir summary TVDs and BH TVD & Latitude/Longitude.

A 'Compute TVDs/BH' button has been added to the Directional survey points panel to manually open the prompt.

Well list has new bulk compute functionality for TVDs, survey offsets and bottom hole locations

83698

The well list has a new option 'Compute TVDs / BH' which allows the following to be recomputed for all selected wells:

- Directional survey offsets / TVDs
- Bottom hole locations
- Well TD TVDs
- Formation TVDs

It also supports performing a trial run and generating a report of the data before and after the recalculation.

For client Santos there is also an option to recompute Reservoir summary TVDs.

Automated recalculation of values - Well header screen

83701

When the total depth, elevation, CRS, location, or active survey of a Well is changed, a screen will be displayed to allow users to recompute Bottom Hole TVD and location.

A 'Compute TVDs/BH' button has also been added to the Wells panel to manually open the recompute screen.

Directional survey loader extended to support automated computing of some values

83703

The dbMap/Web directional survey data loader has been extended to optionally allow computing of various values after loading survey data. The new functionality includes:

- Compute Directional survey offsets and TVDs along with the spatial representation of well paths
- Compute bottom hole locations
- Compute Total Depth TVDs for the well header
- Compute Formation top TVDs
- Compute Reservoir Summary TVDs (This option available for client Santos)

The options are available as checkboxes on the directional survey import screen.

Directional survey loader spreadsheet template now includes example of using new projected CRS 83168

The Well Directional survey loader template spreadsheet now includes sample data for loading a survey with a projected CRS instead of the Correction to true north value

CQ - Directional Survey - Correction to true north rule now passes if projected CRS is specified 83339

The CQ rule "Directional survey should have Correction to true north populated when Azimuth north type is not True north." has been changed so that it now passes if the survey projected CRS is specified for a Grid north survey.

Perforation Diagram showing depths vs dates is now available 83542

A new perforation diagram showing the state of the well over time has been added to the "Wells / Perforations" list. The diagram shows perforated, isolated, and stimulated intervals and supports zooming to a specific depth / date range.

Well log viewer: Added control over index/depth graticules 83565

Added support to hide or change the display style of index/depth graticules for each track in the Well Log Viewer.

Well log viewer: Added option to reverse FMI gradient 83252

The gradient chosen for FMI logs can now be reversed directly in the FMI display style panel without swapping the FMI value range.

dbMap/Web - General

Bug Fixes

Incorrect Easting/Northing and Adjusted X/Y offsets shown when directional survey correction to true north angle was West 83941

Fixed the Well directional survey points screen previously showing incorrect Adjusted X/Y offsets and Easting/Northing values if the survey Azimuth north type was not True north and the Correction to true north value was set with the direction "West".

Palynology user interface improvements, including better display order in lists 82655

Paleo/Paly fixes and changes

Samples

- When the sample type is changed so that Drillers depths are no longer relevant, the Drillers depth values are now cleared from the database.
- The list sorting is now consistent with the displayed values, previously the list could show an inherited depth but didn't use it for sorting.

Interpretations

- The list now inherits depths from the Sample/core if no depths are set against the Interpretation. These values are inherited in pairs, e.g. if the Sample has a base depth but no top depth, the Interpretation would inherit both from the Sample and have no top depth, even if the Core as a top depth.

Error on Well Sample screen when deriving loggers depths with no base depth has been fixed 83837

On the Well Sample screen, if you did not have a base depth populated, pressed the 'Derive logger depths' button and then pressed Save without changing the depth values, it would result in an error. This has been fixed.

dbMap PPDM3.8 - XREF_TYPE is not populated for new MPLT well tests

80834

An issue with the MPLT data loader has been fixed, when importing new MPLT flowing or shut-in intervals, the XREF_TYPE will now be set accordingly.

Support facilities other than rigs and pads can now be assigned to a well

80232

The Wells screen now has a Support Facilities screen, which shows Support Facilities types other than Rigs and Pads. Rigs and Pads already have dedicated screens.

Records Management - Trailing '/' no longer added to Web URLs

83182

When creating or editing Records Management items which are web links, it no longer appends a '/' character to the end of the URL. This previously caused clicking on the link to fail.

Mapping - Issue where GIS layer could become 'stuck' and not able to be removed from the map has been fixed

83291

Through a series of steps, it was possible for a GIS map layer to become 'stuck' on the map without it being able to be removed unless you selected "Restore Options" on the map. This has been fixed.

Formation tops loader - Prevent matching formations without formation type when column is populated

81038

The Formation Tops Loader will now only ignore formation type when matching the formation if the formation type is blank in the input.

Test group added to Well test type reference screen

81146

The Test group field has been added to the Well Test Type reference screen, which is used to define which test types are available on the well RFT, DST, Pressure tests, etc screens. Test types that have a null test group appear on the Other tests screen.

Note that changing the existing test group is not recommended if there is existing well test data for that test type. Please consult Petrosys support if you want to make a change like this.

Mapping - Map images can now be saved

83807

The 'Save Map Image' button on the web map was not saving images in some cases if the image would have exceeded a certain size. This has now been fixed and images will now be successfully saved.

Incorrect user interface was shown when creating a new field via a lookup

80538

The correct user interface is now shown when adding a Field from a lookup.

Old Well test data for RFT and other types are now visible in dbMap/Web

83707

Some clients who had old well test data with the types like RFT, FIT and SGS were not able to see this data on any of the dbMap/Web Well test screens. This has been fixed so that they are now visible on the Other tests screen.

Records Management Wizard - Land right type is now visible in the selection lists

83268

On the Records Management cataloguing wizard, the Granted right type of the permit is now displayed when selecting Permits to link to an RM item.

Some child screens were still shown after parent record was deleted

79392

Child screens are now closed when deleting the parent record.

The list of data selection queries now correctly includes queries that use database PS_ functions

83572

The list of data selection queries shown in dbMap/Web was incorrectly excluding some queries that referenced database functions beginning with 'ps_'. This has been fixed so those queries are now available.

Well Directional survey points panel now shows east/west and north/south direction for x/y offsets

83743

In addition to directional survey points storing X & Y offset values, they can also store the direction of the offset. The direction is now visible and editable on the survey points data screen.

Well Test Loader - Incorrect validation rules were preventing data being loaded

81456

Fixed an issue where the Well Test Loader validation didn't consider some columns when determining whether or not to skip the row.

Wells Advanced Search - It is now possible to search for Frac data filtering by Proppant used

83564

Previously when using the Wells Advanced Search option to search for wells with Frac data and filtering by Proppant used it would result in an error message. This has been fixed.

dbMap/Web - PLDB

Bug Fixes

PLDB - Error when editing drilling opportunities resolved

83796

When trying to save changes to a PLDB Drilling opportunity, it no longer gives an error about not being able to update PPDM_GUID to NULL.