



Software Release Notes

dbMap/Web Version 2023.2.2

dbMap®

PLDB™

1 2023.2 Overview

dbMap/Web 2023.2 introduces functionality to capture historical versions of Land Rights and a new 'Working Area' filter option to allow filtering across the application using a selected set of Land Rights. Finally, the well header data loader has been extended to support import of Easting/Northing location values.

2 Land Right Versions

A new feature called Land Right Versions has been introduced. This feature allows for historical versions of a Land Right/Permit to be captured in dbMap, including the full list of attributes (operator, start and expiry dates, participants etc) and the polygon outlines.

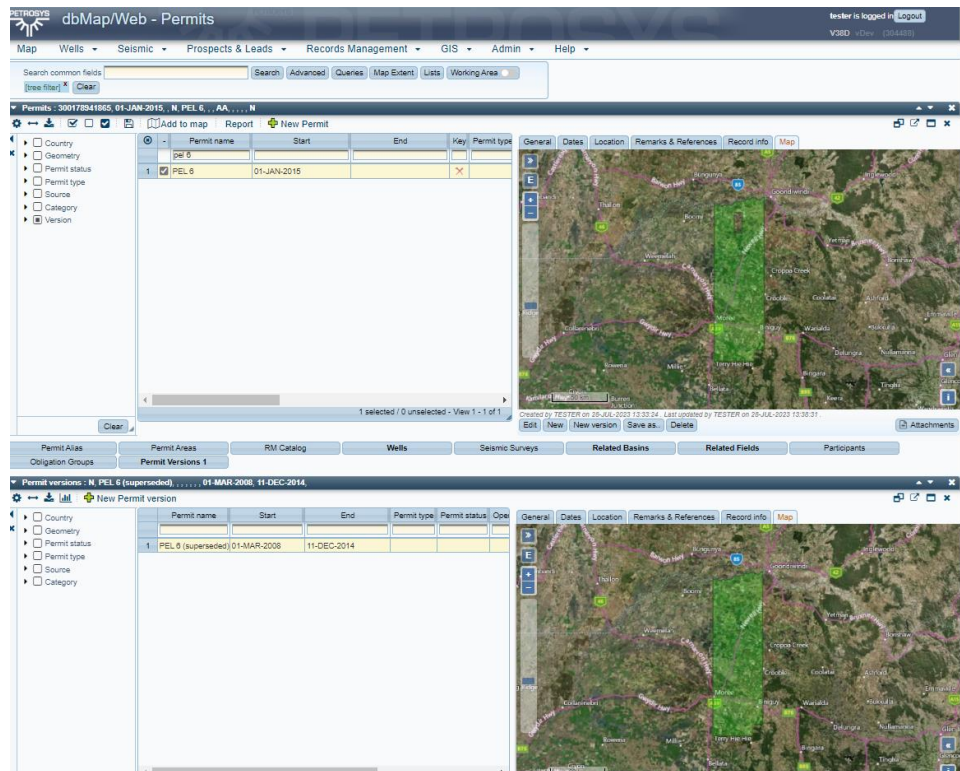
Wells, Seismic and Records Management items can be linked to both the current land right/permit and the historical versions.

When a new version of a land right/permit is loaded, the current permit will automatically be superseded by the new version and appear as a 'superseded' version.

This feature has been introduced in response to client requests to allow selection of wells/seismic/RM items based on an historical permit outline, rather than the current outline of one or more permits. For example, I'd like to see the wells that are related to the 2020 outline of a permit.

Both current and superseded versions of permits/land rights can also be presented on the Map.

This feature goes hand-in-hand with the other new feature of this release – the Working area filter.

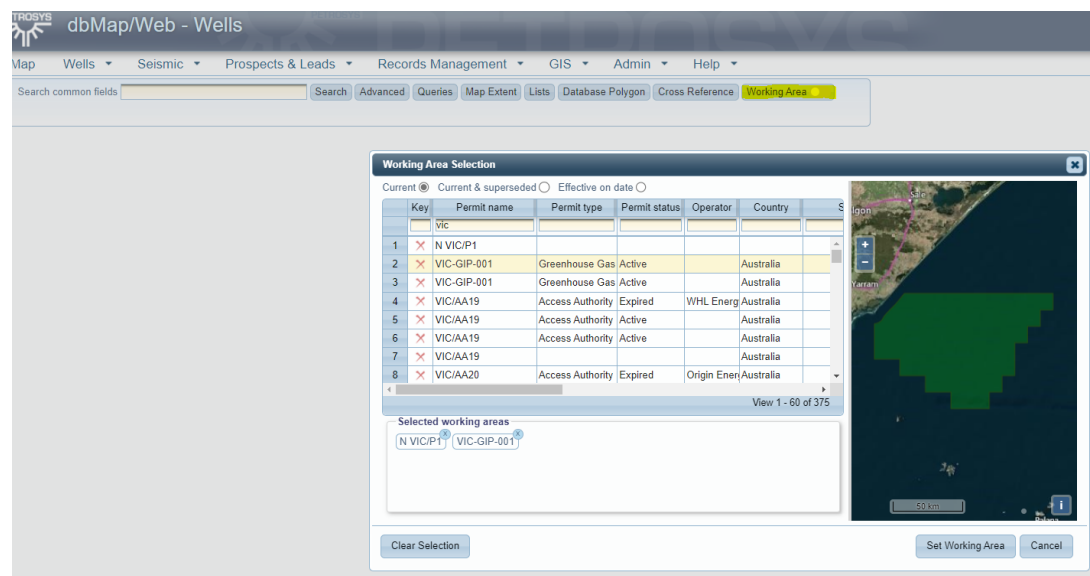


3 Working Area Filter

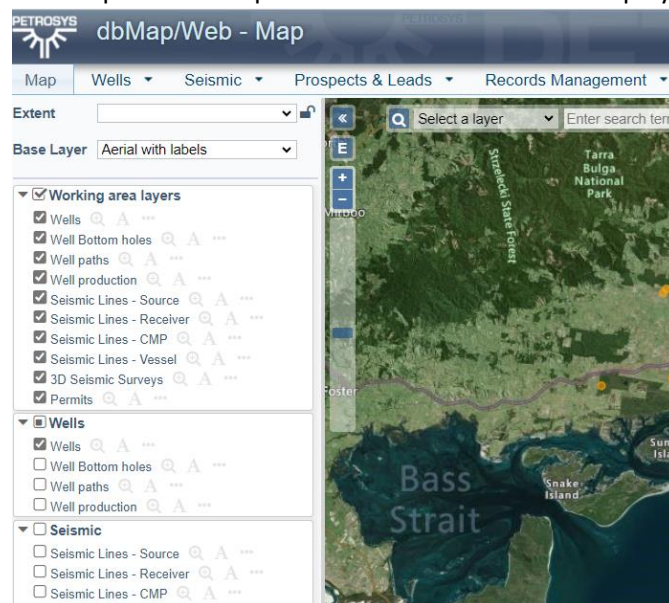
This new feature will allow users to filter their data based on one or more selected permits/land rights. The selection of permits/land rights can include historical, or superseded versions of the permit/land right, and can be selected based on a specific date.

If a user is focused on an area based on a specific set of permits/land rights, the user can set their 'Working Area' to be based on these permits/land rights. After defining the working area, lists of wells, seismic and RM items can be filtered to only show items within the working area.

The working area filter can be toggled on and off easily. Toggling off the working area filter will return the lists of wells, seismic and RM items back to their pre-filtered state.



The Map has been updated to allow items to be displayed based on the Working area selection



The Working Area Filter functionality is available to all clients; however, will be disabled by default. Contact Petrosys support – support@petrosys.com.au – if you would like to enable this feature.

4 Well Header Loader – Easting/Northing Support

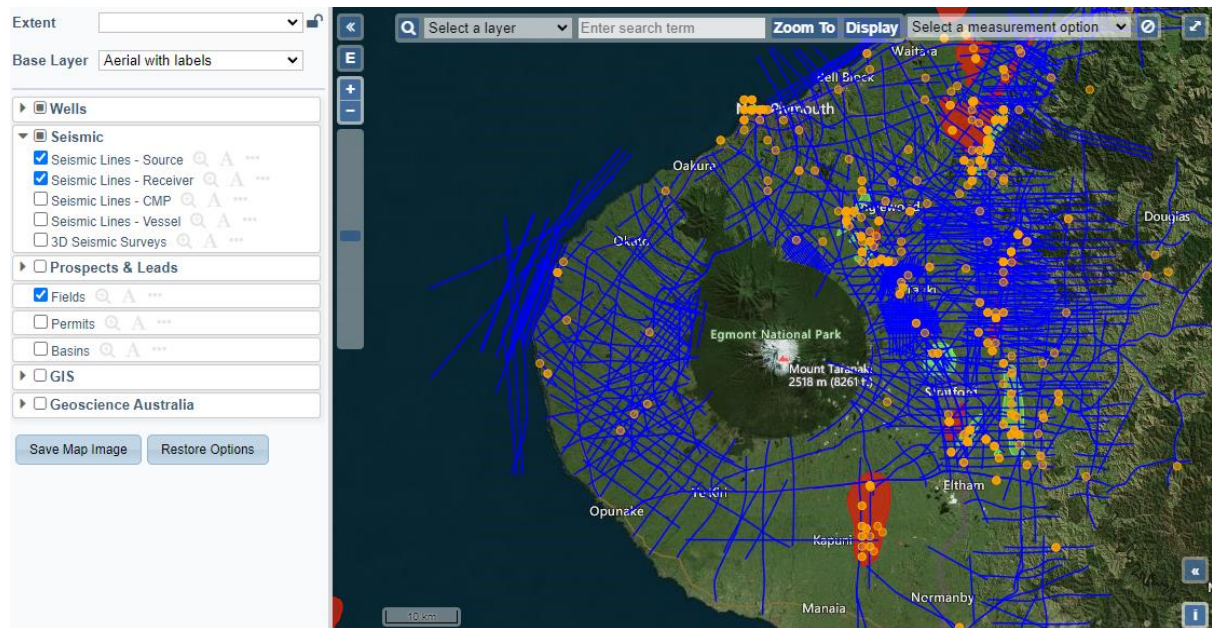
The well header data loader now supports import of Easting/Northing values for surface hole and bottom hole locations. Details for importing Easting/Northing values can be seen in the column hints of the template example import file.

5 2023.1.2 Overview

dbMap/Web 2023.1.2 introduces additional Seismic Line map layers and support for map overlay data provided by other web mapping services.

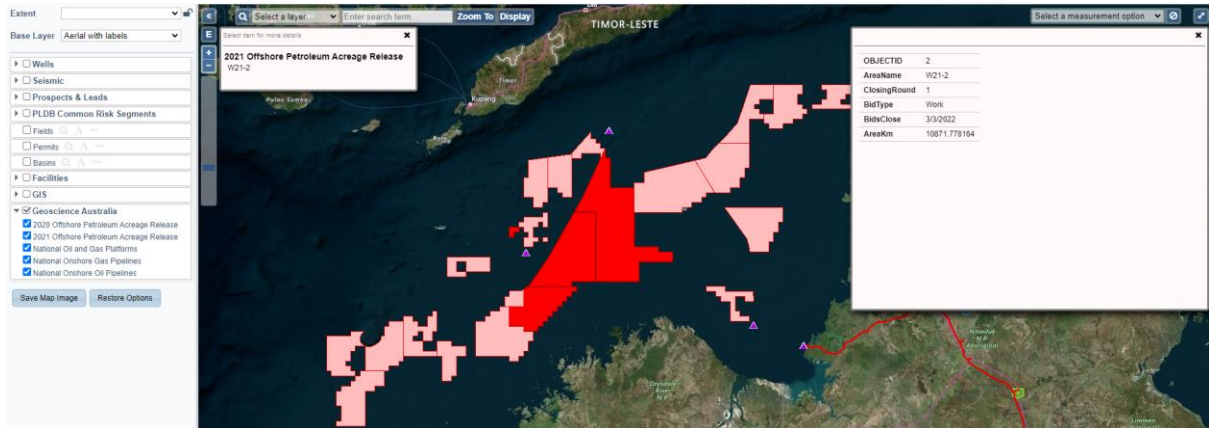
6 Mapping – CMP, Receiver and Vessel Seismic Lines

2D seismic line coordinates can now be displayed on the map for CMP, Receiver and Vessel. Previously only Source coordinates could be displayed.



7 Mapping – WMS Overlays

Overlay data provided by other web mapping services (WMS) can now be configured on the dbMap/Web map. Contact support@petrosys.com.au for assistance with configuration.



Map data attributions:

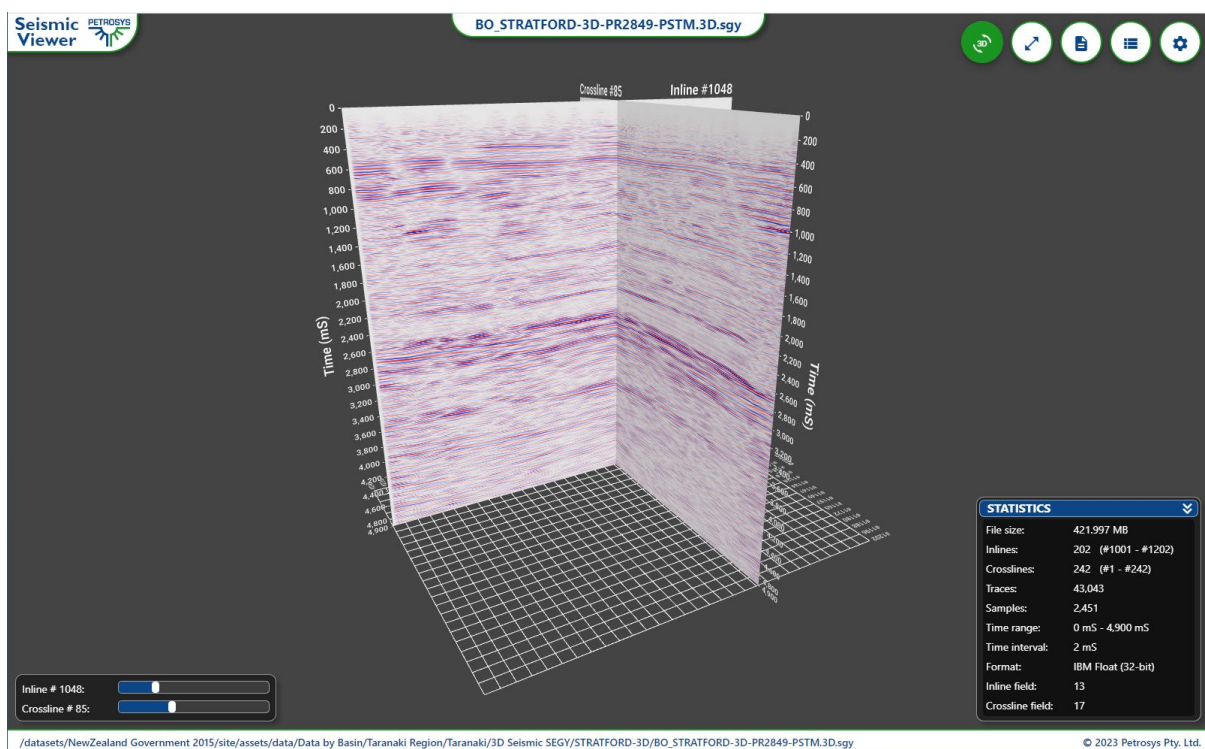
- 2021 Offshore Petroleum Acreage Release Areas
Commonwealth of Australia (Geoscience Australia) 2021. This product is released under the Creative Commons Attribution 4.0 International Licence.
<http://creativecommons.org/licenses/by/4.0/legalcode>
- 2020 Offshore Petroleum Acreage Release Areas
Commonwealth of Australia (Geoscience Australia) 2020. This product is released under the Creative Commons Attribution 4.0 International Licence.
<http://creativecommons.org/licenses/by/4.0/legalcode>
- National Oil and Gas Infrastructure
Commonwealth of Australia (Geoscience Australia) 2015. This product is released under the Creative Commons Attribution 4.0 International Licence.
<http://creativecommons.org/licenses/by/4.0/legalcode>

8 2023.1 Overview

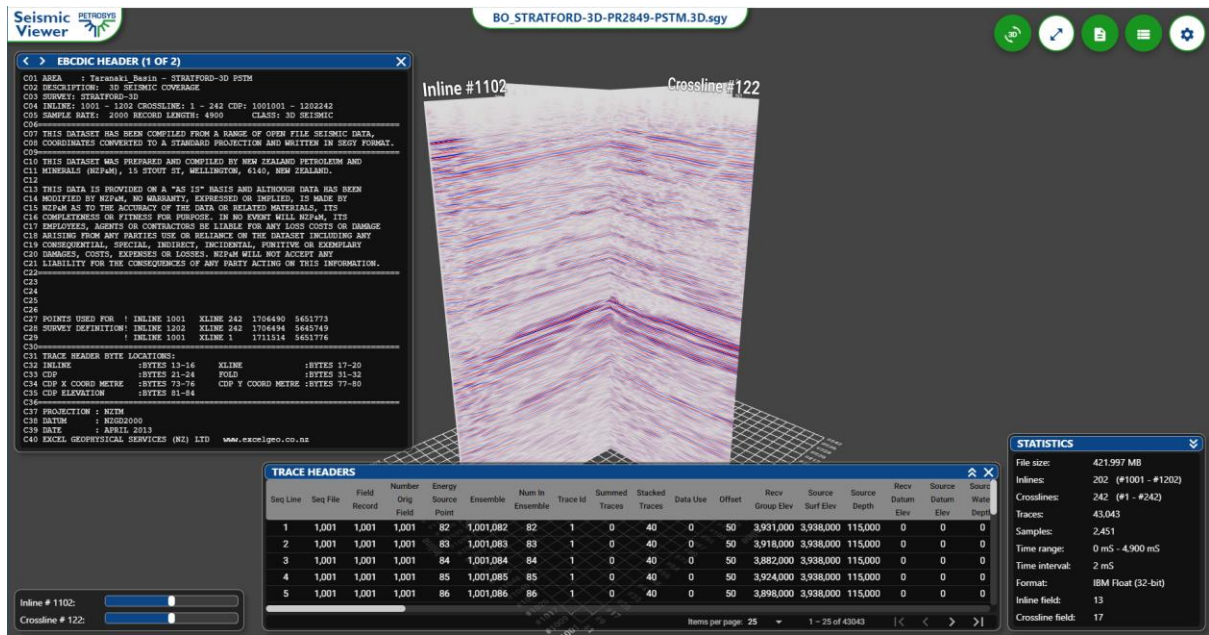
dbMap/Web 2023.1 includes a new Seismic Viewer, the addition of Well Paths and Bottom hole locations on the web map, new file type icons shown next to digital assets in Records Management and a collection of minor enhancements and bug fixes. Under the hood, there have also been several infrastructure and security upgrades.

9 Records Management - Seismic Viewer

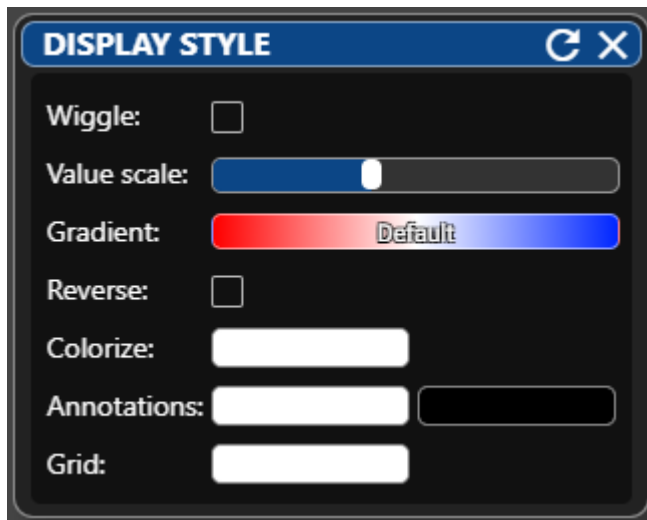
A new seismic viewer has been developed to allow viewing of 2D & 3D Seismic directly in the browser with real time rotation, zooming and stepping through the in-lines and x-lines.



EBCDIC and Trace headers can also be viewed.



The display settings can be adjusted to help highlight sections of data.






















The seismic viewer is available when you select a SEGY file that has been catalogued in Records Management and is a powerful tool for QC-ing data and confirming you are selecting the correct SEGY file.

The SEGY data remains on the server and only the information needed to generate the current display in the browser is sent across the network. This avoids delays and large data transfers.

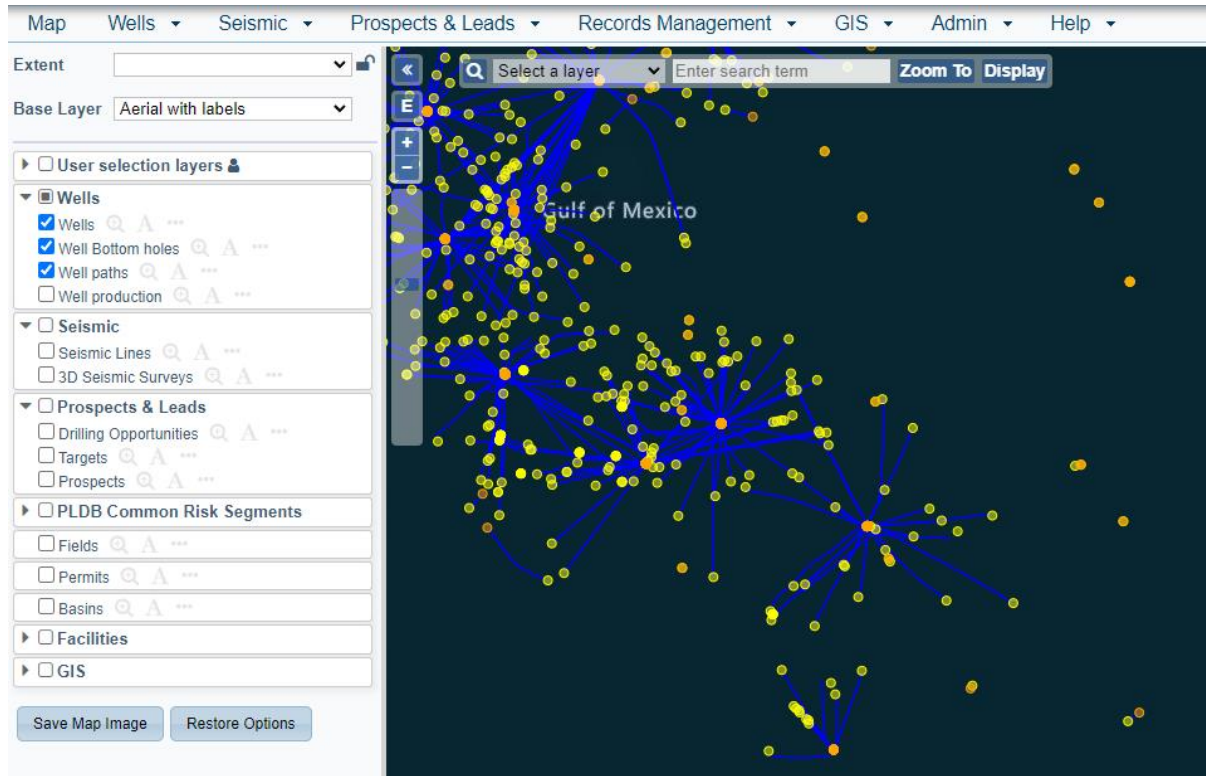
10 Records Management - File Type Icons

Records Management lists now include icons so it is easier to identify the different types of file formats to make it easier to spot files you may be interested in.

		Title / filename	Category	Sub category
92		Core description_Pages_from_PR968.pdf	Well	Core
93		Deviation_Pages_from_PR968.pdf	Unknown	
94		Petrophysics_Pages_from_PR968.pdf	Unknown	
95		Stratford-1 core.jpg	Well	Core Photo
96		Stratford-1.pdf	Well	Well Completion Repc
97		stratford-1_audit_trail.las	Well	Well Log
98		stratford-1_deviation_survey.las	Well	Well Log
99		stratford-1_ec_curves.las	Well	Well Log
100		stratford-1_final.las	Well	Well Log
101		stratford-1_raw.las	Well	Well Log
102		Stratford-1_Well_QC_Summary.xlsx	Well	
103		Stratford-1.pdf	Well	Well Completion Repc
104		CBL-VDL-GR-CCL__PR968L27.tif	Well	
105		CPI Geogram synthetic seis.__PR968L31.tif	Well	
106		CPI Geogram synthetic seis.__PR968L32.tif	Well	
107		DLT-MSFL__PR968L24.tif	Well	
108		DLT-MSFL__PR968L25.tif	Well	
109		Drill Data__PR968L3.tif	Well	
110		FDC-CNT PR968L18.tif	Well	

11 Mapping - Well Paths and Bottom Holes

Display of well bottom holes and well paths are now available through the web map interface.



For well paths to be displayed, a process needs to be run in Petrosys PRO. Please contact Petrosys support if you would like details.

12 Infrastructure and Security

In addition to the new functionality in this release, there have been significant changes to help keep dbMap/Web using the latest version of libraries with the latest security enhancements and bug fixes.

Changes in dbMap/Web 2023.1 include:

- dbMap/Web now requires Java version 17.
- We have dropped support for Internet Explorer 11. It is no longer supported by Microsoft.
- We have updated the third-party libraries we are using to have the latest security updates.
- The backend of dbMap/Web is now packaged as a standalone Java application that is run on a server and no longer requires Apache Tomcat to be installed on a server.

Information is available in the installation guide to help with upgrading.

Detailed Release Notes Summary dbMap/Web 2023.2.2

Bug Fixes

dbMap/Web - General

[83708](#) Help documentation available from main menu

Petrosys Release dbMap/Web 2023.2.2

Detailed Release Notes

dbMap/Web - General

Bug Fixes

Help documentation available from main menu

83708

Fixed a bug preventing the help documentation from being loaded.

Detailed Release Notes Summary dbMap/Web 2023.2.1

Enhancements

dbMap/Web - Administration

[81395](#) Database usernames can contain a hyphen

dbMap/Web - Client

[83299](#) Added Economic event information to the Prospect Resources and Economics screen (Beach only)

[81290](#) Legacy well header data loader has been removed (Santos only)

dbMap/Web - General

[83223](#) Well Header Loader - Added support for well origin

[81408](#) Palynology loader - Added option to replace all by well

[83471](#) Well log viewer: Added option annotation markers track with formation names

Detailed Release Notes Summary dbMap/Web 2023.2.1

Bug Fixes

dbMap/Web - Administration

[83289](#) Set unique session cookie name to avoid clash between Test and Production environments

dbMap/Web - Client

[80966](#) Reservoir Summaries - Grid is ordered by Interval type and Top Depth (Santos only)

[83501](#) RM - Added file type icons (Greymouth only)

[83303](#) Advanced Search - Wells / Coal Summaries - Fixed auto complete / value lookup on Remark column (Origin only)

[80839](#) Well Header - "Map" tab can be selected if the "Downhole diagram" tab is open (Origin only)

[83460](#) Well Header Loader - Added Easting/Northing columns to template (Santos only)

dbMap/Web - General

[83173](#) Advanced Search - "One of" selection option shows correct count

[83387](#) Wells / RM Catalog - Fixed error shown after editing a record

[80967](#) Wells / Fields - Fixed Field Type filter

[81052](#) Facilities - Fixed duplicate Geographic CRS lookup

[83217](#) Well Log Viewer: Fixed some FMI logs not loading from DLIS files

dbMap/Web - PLDB

[83407](#) Resource calculator data can be exported

Petrosys Release dbMap/Web 2023.2.1

Detailed Release Notes

[dbMap/Web - Administration](#) [Enhancements](#)

Database usernames can contain a hyphen

81395

Hyphens are now allowed in usernames when creating users, and the username field will now automatically upper case.

[dbMap/Web - Administration](#)

[Bug Fixes](#)

Set unique session cookie name to avoid clash between Test and Production environments

83289

The dbMap/Web session cookie no longer clashes when multiple instances are running on the same server.

[dbMap/Web - Client](#) [Enhancements](#)

Added Economic event information to the Prospect Resources and Economics screen (Beach only)

83299

Added economic details from the most recent commercial evaluation event to the Prospect Resources and Economics screen.

Legacy well header data loader has been removed (Santos only)

81290

The "Well Headers (Unsupported)" data loader is no longer available for selection in the Data Loaders list for Santos.

[dbMap/Web - Client](#)

[Bug Fixes](#)

Reservoir Summaries - Grid is ordered by Interval type and Top Depth (Santos only)

80966

The Reservoir summaries grid is now ordered by Interval type and Top depth.

RM - Added file type icons (Greymouth only)

83501

Fixed a bug preventing file type icons being shown for Greymouth.

Advanced Search - Wells / Coal Summaries - Fixed auto complete / value lookup on Remark column (Origin only)

83303

An error with the auto-complete / lookup query when filtering Wells / Coal Summaries by Remark has been fixed. The auto-complete lookup and filter now works as expected.

Well Header - "Map" tab can be selected if the "Downhole diagram" tab is open (Origin only)

80839

The 'Downhole Data Diagram' tab no longer blocks buttons on the second row of panel buttons.

Well Header Loader - Added Easting/Northing columns to template (Santos only) 83460

Surface easting and Surface northing columns have been added to the Coordinates section of the Well Header template for Santos.

[dbMap/Web - General](#) [Enhancements](#)

Well Header Loader - Added support for well origin 83223

The ability to set the Well origin has been added to the Well Header data loader.

Palynology loader - Added option to replace all by well 81408

The option to "Replace all by Well" has been added to the Palynology / Well Paleo Summary data loader.

Well log viewer: Added option annotation markers track with formation names 83471

Added option to display either formation code or formation name annotations on a well log viewer formations track.

[dbMap/Web - General](#)

[Bug Fixes](#)

Advanced Search - "One of" selection option shows correct count 83173

The 'one of' Advanced search filter now displays the correct number of selected items and correctly filters results for Wells / Tops - Formation and Wells - Country instead of showing '0 items selected' and not filtering results.

Wells / RM Catalog - Fixed error shown after editing a record 83387

An error that occurred when editing RM Catalog entries via Wells has been fixed.

Wells / Fields - Fixed Field Type filter 80967

An error experienced when trying to filter Fields by Field type using the tree filter on the Wells / Fields screen has been fixed.

Facilities - Fixed duplicate Geographic CRS lookup 81052

The Geographic CRS field on the GIS / Facilities screen now only opens a single Reference table lookup window.

Well Log Viewer: Fixed some FMI logs not loading from DLIS files 83217

In previous versions, some FMI logs would not load from DLIS files due to them having an empty units value. This has now been fixed.

[dbMap/Web - PLDB](#)

[Bug Fixes](#)

Resource calculator data can be exported 83407

Fixed a bug preventing resource computation data being exported when the panel is in 'edit' mode.

Detailed Release Notes Summary dbMap/Web 2023.2

Enhancements

dbMap/Web - Client

- [83174](#) Mapping - "See more" option now opens in a new window (Santos only)
- [83185](#) Mapping - Imagery server URL has been updated for Origin base map (Origin only)
- [83178](#) Well data loaders - Now requires matching on Well Name and Well ID (GCS only)

dbMap/Web - General

- [82295](#) Added Working Area filter option
- [78077](#) Well Header Data Loader - Now supports import of Easting/Northing location values
- [82294](#) Added support for historical Land Right versions
- [80174](#) Records Management Crawler - Configuration simplified when setting up email alerts
- [82821](#) Example placeholder values are now shown on inputs for Latitude & Longitude coordinate fields
- [82856](#) Performance of ps_crs_convert_x/y dbMap SQL functions improved

Detailed Release Notes Summary dbMap/Web 2023.2

Bug Fixes

dbMap/Web - Client

[83158](#) Default map extent has been configured (SKK only)

dbMap/Web - General

[83163](#) GIS Field polygons can now be imported from Petrosys polygon files

[80934](#) CQ - Re-computing Quality has been fixed for checkshots when Data confidence is NULL

[83175](#) Database error when updating well header has been resolved

[81862](#) Seismic Lines - Advanced Search - Now supports filtering by coordinate type

Petrosys Release dbMap/Web 2023.2

Detailed Release Notes

[dbMap/Web - Client](#) [Enhancements](#)

Mapping - "See more" option now opens in a new window (Santos only)

83174

The "See more" option shown above the data panel on the map now opens in a new window. Previously it would navigate away from the Map when showing the detailed data.

Mapping - Imagery server URL has been updated for Origin base map (Origin only)

83185

Mapping has been changed to point to a new Imagery server URL for base map imagery.

Well data loaders - Now requires matching on Well Name and Well ID (GCS only)

83178

When spreadsheet data loaders are looking for an existing well, they now always try to match on the combination of Source & Well name or Source & Well alias rather than on Well name or Well alias on their own for client GCS.

[dbMap/Web - Client](#) [Bug Fixes](#)

Default map extent has been configured (SKK only)

83158

The default extent for mapping has now been set to the preferred value.

[dbMap/Web - General](#) [Enhancements](#)

Added Working Area filter option

82295

This new feature will allow users to filter their data based on one or more selected permits/land rights. The selection of permits/land rights can include historical, or superseded versions of the permit/land right, and can be selected based on a specific date.

If a user is focused on an area based on a specific set of permits/land rights, the user can set their 'Working Area' to be based on these permits/land rights. After defining the working area, lists of wells, seismic and RM items can be filtered to only show items within the working area.

The working area filter can be toggled on and off easily. Toggling off the working area filter will return the lists of wells, seismic and RM items back to their pre-filtered state.

Well Header Data Loader - Now supports import of Easting/Northing location values

78077

The well header data loader now supports import of Easting/Northing values for surface hole and bottom hole locations. Details for importing Easting/Northing values can be seen in the column hints of the template example import file.

Added support for historical Land Right versions

82294

This feature allows for historical versions of a Land Right/Permit to be captured in dbMap, including the full list of attributes (operator, start and expiry dates, participants etc) and the polygon outlines.

Wells, Seismic and Records Management items can be linked to both the current land right/permit and the historical versions.

When a new version of a land right/permit is loaded, the current permit will automatically be superseded by the new version and appear as a 'superseded' version.

This feature has been introduced in response to client requests to allow selection of wells/seismic/RM items based on an historical permit outline, rather than the current outline of one or more permits. For example, I'd like to see the wells that are related to the 2020 outline of a permit.

Both current and superseded versions of permits/land rights can also be presented on the Map.

Records Management Crawler - Configuration simplified when setting up email alerts

80174

The Records Management Crawler sends out an email to administrators if particular errors occur. Previously, when specifying the email server to be used for the alert messages administrators had to run a command manually in the database using sqlplus to enable alerts. This is no longer required.

Example placeholder values are now shown on inputs for Latitude & Longitude coordinate fields

82821

Latitude and Longitude input fields now show an example of the expected format of values. This helps guide users when they have toggled between 'DMS and Decimal' display modes.

Performance of ps_crs_convert_x/y dbMap SQL functions improved

82856

The performance of ps_crs_convert_x/y dbMap SQL functions has been improved by caching some CRS information.

dbMap/Web - General

Bug Fixes

GIS Field polygons can now be imported from Petrosys polygon files

83163

Importing GIS Field polygons from a Petrosys polygon file would previously cause an error message and the polygon would not be saved. This has now been fixed.

CQ - Re-computing Quality has been fixed for checkshots when Data confidence is NULL

80934

Recomputing the quality for well checkshots now works when the confidence value has not been set. Previously it would return an error about an integrity constraint being violated.

Database error when updating well header has been resolved

83175

An issue was introduced in dbMap/Web 2023.1.2 which could result in an error message when trying to update well header values. This has been fixed in this release and we have also provided a database script that a site running 2023.1.2 can run to fix the issue prior to upgrading.

Seismic Lines - Advanced Search - Now supports filtering by coordinate type

81862

Previously the advanced search option for seismic lines would show an error if you tried to search on lines with a specific coordinate type. This has been fixed and it's now possible to filter for lines with Source, Receiver, CMP or Vessel coordinates.

Detailed Release Notes Summary dbMap/Web 2023.1.2

Enhancements

dbMap/Web - Client

- [81502](#) Fixed mutating trigger error when deleting a Permit (Santos only)
- [82170](#) dbMap GIS spatialisation fixed (Santos only)
- [82772](#) Seismic Survey - Added Government ID to screen (Inpex only)
- [81385](#) Reviewed Installation and Pulled dates for Casing/Liners and Production Strings (Santos only)
- [83094](#) Updated Santos branding (Santos only)
- [83099](#) Configuration of map extents (Parex only)
- [83090](#) Configuration of map extents (SKK Migas only)
- [83064](#) Well Tests - Added support for Formation Integrity Tests (Origin only)

dbMap/Web - General

- [81425](#) Well Tests - LET - Added support for CO2 and H2S values
- [72218](#) Mapping - Can now display CMP, Vessel and Receiver seismic line coordinates
- [83080](#) Well Tests - Fixed wrong test date being shown in Well RFT view
- [82934](#) Audit history turned off for dbMap GIS tables to improve performance
- [82935](#) Gas compositional analysis label updated
- [83071](#) Mapping - Added support for WMS overlays
- [82933](#) Performance improved when deleting dbMap GIS data
- [83059](#) Upgraded third party libraries
- [81826](#) Well Fracture stimulation data acquisition flag added
- [83025](#) Well log browser performance improved
- [80660](#) Well Sample Loader - Extended to support additional columns

Detailed Release Notes Summary dbMap/Web 2023.1.2

Bug Fixes

dbMap/Web - Client

- [83111](#) Checkshot survey spreadsheet loader - Now populates PPDM_GUID column used by CQ
- [83032](#) Well Tests - MPLT records with hidden station data can be deleted (Santos only)

Petrosys Release dbMap/Web 2023.1.2

Detailed Release Notes

[dbMap/Web - Client](#) [Enhancements](#)

Fixed mutating trigger error when deleting a Permit (Santos only) 81502

For Santos only, attempting to delete a Permit would give a mutating trigger error. This has been fixed.

dbMap GIS spatialisation fixed (Santos only) 82170

For Santos only, if a dbMap GIS (culture) polygon had points edited manually or created on a map using PRO, the polygon would not appear in dbMap/Web. This has been fixed so that the spatial geometry is now automatically generated for such polygons.

Seismic Survey - Added Government ID to screen (Inpex only) 82772

Added a read only 'Government ID' field to the Seismic Survey header to show the Survey Alias with type 'GOVT_ID'.

Reviewed Installation and Pulled dates for Casing/Liners and Production Strings (Santos only) 81385

The way conduit and production string dates are stored and reported in dbMap/Web has been changed to reflect feedback from Santos.

- Casing/Liners - Pulled date has been added to the list and screen. This is a new column that has been added to the database
- Production String - Installation date and pulled date have been added to the list and panel. These dates come from the linked conduit
- Production String - The existing 'Pulled date' field on this screen has been relabelled 'Pulled date (obsolete)'
- Data migration - The original migration populated the production string 'On production date' or 'On Injection date' and the 'Pulled date'. This data has now been migrated to the Casing/Liners Installation date and Pulled date.

Updated Santos branding (Santos only) 83094

Updated Santos branding to reflect recent corporate branding changes.

Configuration of map extents (Parex only) 83099

Configured map extents for Columbia and Arauca and removed irrelevant map extents.

Configuration of map extents (SKK Migas only) 83090

Configured map extent for Indonesia and removed irrelevant map extents.

Well Tests - Added support for Formation Integrity Tests (Origin only) 83064

Added a screen and data loader for Formation Integrity Tests, including Leak-Off Test results.

[dbMap/Web - Client](#) [Bug Fixes](#)

Checkshot survey spreadsheet loader - Now populates PPDM_GUID column used by CQ 83111

The checkshot data loader now populates a column (PPDM_GUID) when creating new checkshot surveys. This CQ data quality scoring expects the column to be populated and can show an error message if it is not.

Well Tests - MPLT records with hidden station data can be deleted (Santos only) 83032

Extended the "Wells / Well Test - MPLT" screen to include the deletion of flowing and shut-in station data when the MPLT test is deleted.

[dbMap/Web - General Enhancements](#)

Well Tests - LET - Added support for CO2 and H2S values 81425

Support for storing CO2(%) and H2S(ppm) values has been added to the Well Tests/LET panel.

Mapping - Can now display CMP, Vessel and Receiver seismic line coordinates 72218

2D seismic line coordinates can now be displayed on the map for CMP, Receiver and Vessel. Previously only Source coordinates could be displayed.

Well Tests - Fixed wrong test date being shown in Well RFT view 83080

The well test RFT database view PS_WT_WIRELINE_FMTN_TEST has been fixed to show the correct test date.

Audit history turned off for dbMap GIS tables to improve performance 82934

Audit history has been turned off for dbMap GIS tables to help with performance issues when loading data.

Gas compositional analysis label updated 82935

The Coal core analysis/Gas composition analysis label has been changed to "Measured gas (Q1+Q2, Raw) at time"

Mapping - Added support for WMS overlays 83071

Added support to display overlays on the map from an other WMS sources.

Performance improved when deleting dbMap GIS data 82933

Performance has been improved when deleting dbMap GIS data, by the addition of indexes on database tables with foreign key references to the SPATIAL_DESCRIPTION table. The amount of improvement depends on how much data is in the referencing tables. e.g. it can be significant for clients that have a lot of RM data.

Upgraded third party libraries 83059

A number of third party libraries have been upgraded to include the latest security updates to resolve potential vulnerabilities.

Well Fracture stimulation data acquisition flag added 81826

A new data acquisition flag for Fracture stimulation is now available on the Well header Acquisition tab.

Well log browser performance improved 83025

The performance of the Well log browser option has been improved. Previously it could take more a few minutes or even timeout when loading the lists, where it now takes a few seconds.

Well Sample Loader - Extended to support additional columns 80660

The Well Sample data loader has been extended to support the Remark, Formation, Seam, Date sample collected, Drillers depths, Lithology percent and Lithology remark columns.

Detailed Release Notes Summary dbMap/Web 2023.1.1

Enhancements

dbMap/Web - Client

[82900](#) Wells / Samples - Seam lookup changed to show coal reservoirs (Santos only)

dbMap/Web - General

[82780](#) New CRS related dbMap SQL functions added

[82962](#) Records Management dashboard - Charts added showing breakdown of disk space by Category, Digital format and Source

Detailed Release Notes Summary dbMap/Web 2023.1.1

Bug Fixes

dbMap/Web - Administration

[82671](#) List of database users can be exported

dbMap/Web - General

[82788](#) Well Directional Survey Points panel displayed correctly when directional survey header is changed

[82782](#) Added survey projected CRS units to the directional survey points screen

Petrosys Release dbMap/Web 2023.1.1

Detailed Release Notes

dbMap/Web - Administration

Bug Fixes

List of database users can be exported

82671

Fixed a bug preventing the list of database users from being exported to Excel.

dbMap/Web - Client

Enhancements

Wells / Samples - Seam lookup changed to show coal reservoirs (Santos only)

82900

The Seam lookup on the "Wells / Sample" screen has been changed to show coal reservoirs.

dbMap/Web - General

Enhancements

New CRS related dbMap SQL functions added

82780

The following four new Coordinate Reference System (CRS) related functions have been made available in dbMap/Web:

- ps_well_closest_tm_proj_crs (UWI) - Returns the closest Transverse Mercator projected CRS for a well based on the it's surface location and geographic CRS
- ps_well_path_proj_crs (UWI) - Returns well path projected CRS (if assigned)
- ps_crs_name (CRS_ID) - Returns a CRS name
- ps_proj_crs_uom (CRS_ID) - Returns a projected CRS unit of measure

Records Management dashboard - Charts added showing breakdown of disk space by Category, Digital format and Source

82962

The Records Management dashboard has been extended to include charts to show a breakdown of disk space used by different categories and formats of data.

dbMap/Web - General

Bug Fixes

Well Directional Survey Points panel displayed correctly when directional survey header is changed

82788

Fixed a bug causing cached information to be displayed if the Directional Survey header was changed while the Directional Survey Points screen was open.

Added survey projected CRS units to the directional survey points screen

82782

The directional survey projected CRS units are now displayed on the directional survey points panel. These units apply to the read-only Adjusted X/Y offset values.

Detailed Release Notes Summary dbMap/Web 2023.1

Enhancements

Configuration - Licensing

[82402](#) dbMap/Web 2023.1 licensing - New license file required

dbMap/Web - Administration

[80912](#) dbMap/Web infrastructure changes for 2023.1

[81009](#) Geoserver upgraded in dbMap/Web 2023.1

dbMap/Web - Client

[82171](#) Conduits linked to production are now visible on Casing/Liners screen (Santos)

[81491](#) Isolation pull date added to completions / isolations screen (Santos)

[82589](#) Data loaders - Custom template added for the Well Tests (Origin)

[82662](#) Well log cron process - Now populates the well log curve mnemonic description (Origin)

dbMap/Web - General

[77892](#) Mapping - Can now display bottom hole locations and well paths

[81870](#) Performance improvement for CQ data

[79375](#) Mapping - Well name annotation excludes the well number column

[81426](#) Installation date on Casing screen has been renamed

[82274](#) Adsorption Isotherm - "Isotherm reservoir pressure eqn:M" is now shown to 4 decimal places

[82447](#) Data loader - Well Directional Survey - Support added for Survey Projected CRS

[80593](#) Directional surveys - Added support for using Projected CRS as an alternative for Correction to True north

[82643](#) New dbMap SQL functions have been added - ps_well_path_crs_x & ps_well_path_crs_y

[82173](#) Reference table editing now available for R_STRAT_NAME_SET_TYPE

[81252](#) Seismic viewer available in dbMap/Web

[82262](#) Well Activities data screen now available for all PPDM 3.8 clients

[82182](#) Well Alias Loader - Now supports matching by UWI, Source and Well Alias ID

[82445](#) Well directional survey screen changes

Detailed Release Notes Summary dbMap/Web 2023.1

Bug Fixes

dbMap/Web - Client

- [82730](#) Capricorn well header importer - Error referencing 'ONLINE_STATUS'
- [81575](#) Obligations - Screen changes (Origin)
- [81565](#) Well Header - Incorrect operating status displayed (Santos)
- [82554](#) Well list no longer shows duplicate rows if the country or state is UNKNOWN (SKKMigas only)

dbMap/Web - General

- [82379](#) Production Charts - Null Pointer Exception if a Well Test record has a null Test Date
- [81701](#) Correct gas rates are now displayed on multi-well production chart
- [81936](#) Records Management - A Null Pointer Exception could occur when reading Microsoft document metadata
- [82551](#) Charting now works for the GIS Feature list attributes screen
- [82704](#) Data loader - MPLT template units for Gas rate has been fixed
- [82612](#) Records Management - Office document preview performance has been improved
- [82676](#) Well log viewer: Improved LAS 2.0 support
- [82441](#) Well Tests - Fixed wrong test date being shown in Well Gradient survey views
- [82673](#) Wells / Obligations screen now works on all supported versions of Oracle
- [81928](#) Wells / Wells Logs - Panel sometimes displays incorrect data if there are multiple source records for the same WELL_LOG_ID

Petrosys Release dbMap/Web 2023.1

Detailed Release Notes

[Configuration - Licensing](#) [Enhancements](#)

dbMap/Web 2023.1 licensing - New license file required 82402

To use dbMap/Web 2023.1, a new license file is required. Acquire your license file by logging in to the Petrosys Client Portal or reaching out to Petrosys Support.

[dbMap/Web - Administration](#) [Enhancements](#)

dbMap/Web infrastructure changes for 2023.1 80912

There are some changes to how dbMap/Web is deployed on the server. Key changes are:

- Java version 17 now required on the server machine (not needed on end-user machines)
- Deployment on the server as a Java application; Apache Tomcat installation no longer required.
- Discontinuation of support for Internet Explorer 11.
- Updated libraries for the latest security enhancements and fixes.

More details on installing and upgrading are available in the installation guide.

Geoserver upgraded in dbMap/Web 2023.1 81009

A new version of GeoServer is being deployed alongside the 2023.1 release of dbMap/Web. See the installation guide for details on deploying.

[dbMap/Web - Client](#) [Enhancements](#)

Conduits linked to production are now visible on Casing/Liners screen (Santos) 82171

Previously, conduits that are linked to production were not displayed on the Casing/Liners screen for Santos. All conduits are now available.

Isolation pull date added to completions / isolations screen (Santos) 81491

Isolation pull date field is now available on the completions / isolations screen for Santos.

Data loaders - Custom template added for the Well Tests (Origin) 82589

The well test data loader has been customized for Origin.

Well log cron process - Now populates the well log curve mnemonic description (Origin) 82662

The well log cron process at Origin has been updated to populate the well log curve mnemonic description.

Capricorn well header importer - Error referencing 'ONLINE_STATUS'

82730

The well header data loader previously could display an error message referencing 'ONLINE_STATUS' for client Capricorn. This has been fixed.

Obligations - Screen changes (Origin)

81575

There have been several changes made to the Wells/Obligations screen for Origin:

- Some fields that are set programmatically have been made read only.
- Obligation ACTIVE_IND is now editable on the Obligations reference screen.

Well Header - Incorrect operating status displayed (Santos)

81565

The latest operating status is now displayed on the well header screen for Santos. Previously it was displaying the oldest status.

Well list no longer shows duplicate rows if the country or state is UNKNOWN (SKKMigas only)

82554

For SKKMigas only, the well list would show duplicate rows if a well had a country or state that was UNKNOWN. This has been fixed.

Mapping - Can now display bottom hole locations and well paths

77892

Well bottom hole locations and well paths can now be displayed on the map.

Performance improvement for CQ data

81870

The performance of CQ (Our data Confidence and Quality module) has been improved by addition of a new index to the database.

Mapping - Well name annotation excludes the well number column

79375

Annotation on the map Wells layer has been changed to only show the well name.

Installation date on Casing screen has been renamed

81426

The field that was previously called observation date has been renamed to installation date to make its purpose clearer.

Adsorption Isotherm - "Isotherm reservoir pressure eqn:M" is now shown to 4 decimal places

82274

On the Adsorption Isotherm screen, "Isotherm reservoir pressure eqn:M" is now shown to 4 decimal places.

Data loader - Well Directional Survey - Support added for Survey Projected CRS

82447

When importing directional surveys using the spreadsheet loader we now support the Survey Projected CRS column.

Directional surveys - Added support for using Projected CRS as an alternative for Correction to True north 80593

Well Directional surveys now have support for storing a projected CRS. This will be used for surveys that have azimuths relative to Grid north to compute the Grid convergence angle on the fly, avoiding the need to store a Correction to True north angle with the survey. It can also be used to store the projected CRS for positional log surveys from data sources where the X/Y offsets have been computed for that CRS.

Note: This requires the database upgrade associated with the release to be run. From the database point of view the changes include the addition of AZIMUTH_COORD_SYS_ID column to the WELL_DIR_SRVY table from PPDM3.9 to store the projected CRS ID, along with some updates to the precision and scale of several columns in the WELL_DIR_SRVY and WELL_DIR_SRVY_STATION tables to match PPDM3.9.

New dbMap SQL functions have been added - ps_well_path_crs_x & ps_well_path_crs_y 82643

Two new functions have been made available within dbMap/Web for calculating the Easting and Northing locations of a depth along a well path - ps_well_path_crs_x & ps_well_path_crs_y.

Both functions have 3 mandatory arguments: UWI, Measured depth & Target CRS.

There are also optional arguments for specifying the number of decimal places for the result, and to provide the Source and SurveyID if you want to perform the calculation using a non-preferred directional survey.

Reference table editing now available for R_STRAT_NAME_SET_TYPE 82173

It is now possible to edit values for the reference table R_STRAT_NAME_SET_TYPE.

Seismic viewer available in dbMap/Web 81252

dbMap/Web now contains a seismic viewer for previewing seismic data from SEGY files catalogued in Records Management. It provides a 3D view of inlines and xlines as well as EBCDIC header and Trace header information. More information and screenshots are available in the release notes highlights section.

Well Activities data screen now available for all PPDM 3.8 clients 82262

The Well Activities data screen is now available for all PPDM 3.8 clients.

Well Alias Loader - Now supports matching by UWI, Source and Well Alias ID 82182

The well alias data loader now supports an additional way of matching records. It will now also look for a match on the combination of UWI, Source and Well Alias ID if provided.

Well directional survey screen changes 82445

Several changes have been made to the directional survey screens to display more information.

Survey header:

- A projected CRS field is now available that can be used for grid convergence angle calculations.

Survey points - Additional columns have been added to the list and panel:

- Adjusted X Offset - computed on fly, taking the curvature of the earth into consideration, if a projected CRS is stored on the survey header
- Adjusted Y Offset - computed on fly, taking the curvature of the earth into consideration, if a projected CRS is stored on the survey header
- Easting - computed on the fly if a projected CRS is stored on the survey header
- Northing - computed on the fly if a projected CRS is stored on the survey header
- Latitude - Will only contain a value if the X/Y offsets have been computed using Petrosys PRO
- Longitude - Will only contain a value if the X/Y offsets have been computed using Petrosys PRO

Production Charts - Null Pointer Exception if a Well Test record has a null Test Date

82379

Well production charts can also include some information from well tests. If one for more of the well tests for the charted well had a null Test Date, it could result in a Null Pointer Exception error message being displayed. This has been fixed.

Correct gas rates are now displayed on multi-well production chart

81701

When displaying multiple wells on a production chart the gas rates shown could be incorrect if some months did not contain data. This has been fixed so the gas rates shown are correct.

Records Management - A Null Pointer Exception could occur when reading Microsoft document metadata

81936

In Records Management, we display some additional meta data on the panel that we extract from office documents (XLS, etc). Depending on the content of a file, this could result in a Null Pointer Exception error message being displayed. This has been fixed.

Charting now works for the GIS Feature list attributes screen

82551

The charting tool now functions correctly when launched from the GIS Features list attributes screen, resolving the previous Null Pointer Exception issue.

Data loader - MPLT template units for Gas rate has been fixed

82704

The data loading template for MPLT data had incorrect units for Gas rate. This has been fixed to use the Gas Flow units.

Records Management - Office document preview performance has been improved

82612

Performance of previewing office documents such as DOCX, XLSX, etc has been improved. The first preview after server startup remains the same in terms of duration, but previewing subsequent documents is faster. The performance of previewing when the server is hosted on windows is now similar to performance when hosted on Linux.

Well log viewer: Improved LAS 2.0 support

82676

Improvements have been made to the LAS 2.0 file parser used by the well log viewer to handle extra characters on parameter (~P) and curve (~C) header rows. Optionally, the well log viewer can be made more tolerant of comment lines being placed in the data (~A) section.

Well Tests - Fixed wrong test date being shown in Well Gradient survey views

82441

The dbMap PPDM3.8 database views PS_WT_GRADIENT_SURVEY_HEADER and PS_WT_GRADIENT_SURVEY_DETAIL now return the correct values in the TEST_DATE column. Previously they would return null values for new data that was created on the well test Gradient survey screen or imported via the data loader.

Wells / Obligations screen now works on all supported versions of Oracle

82673

The Wells/Obligations screen previously generated an error with certain Oracle versions due to an incompatible query. This has been fixed so queries used are valid for all supported versions of Oracle.

Wells / Wells Logs - Panel sometimes displays incorrect data if there are multiple source records for the same WELL_LOG_ID

81928

On the well log panel, the correct data is now displayed for the relevant source if there are multiple records for the same well and WELL_LOG_ID from different sources.