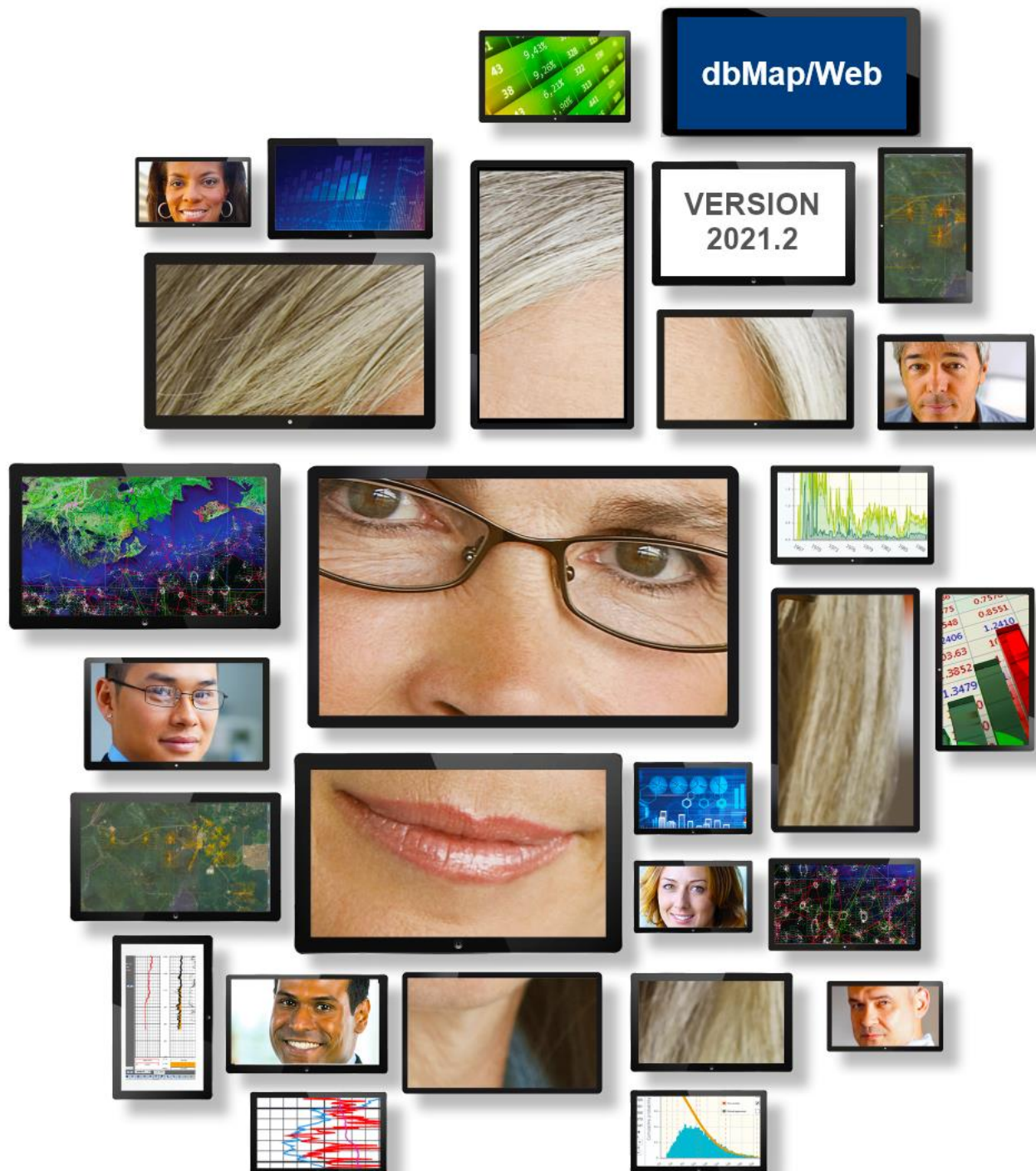




SOFTWARE RELEASE NOTES

dbMap/Web Version 2021.2.1



Overview

dbMap/Web 2021.2 sees the introduction of more data loaders and functionality to support reformatting data files as they are loaded to avoid needing to copy & paste data into a different format.

New Data Loaders

Multiple new data loaders are now available that make use of the dbMap/Web data loading framework. These build on the other data loaders added in the 2021.1 releases.

Each of these data loaders comes with support for trial runs without committing changes to the database, useful messages when there is a data error preventing loading and progress notification as the data loading job runs.

The formation tops loader also comes with additional functionality to calculate TVD values if they are missing as the records are imported.

The new data loaders are:

- Well aliases
- Reservoir summaries
- Formation tops (Replacing older data loader)
- Directional surveys (Replacing older data loader)
- Checkshot surveys (Replacing older data loader)

Added Support for Obligations

A new Obligations capability has been added to dbMap/Web. This capability allows companies to capture things they are required to during a well's life cycle and maintain a record of whether they have fulfilled the requirement.

For example, a well drilled under a government petroleum act might be required to submit reports or notifications before, during and post drilling the well, including events in the well's lifecycle, such as production, fracture stimulation or abandonment. These requirements or obligations are typically included in the issue of the permit where the well is to be drilled, and the operating company must comply with them.

The new Obligations feature allows for these requirements to be defined in the system, then assigned to one or more permits. The system can then generate individual well obligations, which will include a 'due date' and provision to update the obligation with a fulfilled date if the obligation has been satisfied.

In the following screenshot, two Government reporting obligations have been assigned to a well: one a notice of completion notification and the other a Well Completion Report submission. Both obligations have an automatically generated due date. The completion notification is Overdue, based on the well's spud date.

Well Details Drilling & Completions Surveys & Logging Core & Analysis Well Tests Interpretive						
Remarks 8	Well Aliases	Status 3	Well Areas 4	Basins	Fields	Permits
Rig	Pad	Relationships	Business Associates	RM Catalog	Obligations	
Obligations : Well Completion Report Submission (Petro, Non-payment Obligation, Government Report Submission, Origin Energy Limited, , 05-JAN-2023, null, ,						
Update Well Obligations						
Obligation description	Obligation type	Overdue?	Critical date	Fulfilled	Fulfilled date	
1 PGGD-02 Notice of Completion (Petroleum Act)	Government Report Submission	Overdue	30-JAN-2022	✗		
2 Well Completion Report Submission (Petroleum Act)	Government Report Submission		05-JAN-2023	✗		
				General	Record info	
				Obligation	Well Completion Report Submission (Petroleum Act)	
				Obligation group	QLD Govt Petroleum Act	
				Obligation category	Non-payment Obligation	
				Obligation type	Government Report Submission	
				Obligation source	Origin Energy Limited	
				Critical date	05-JAN-2023	
				Fulfilled		
				Fulfilled date		
				Remark		

The business rules that define the applicability of a well to an obligation and the calculation of the due date are configurable within dbMap/Web, meaning that companies can self-manage their obligation definitions within the system.

Loading Files in Alternate Formats

If you have people at your company familiar with python or other programming languages, it is now possible to write a script or create a small program that can reformat files during the data load.

An example use case is if you receive lots of files in a particular format from a service company, you can write a script to reformat the file into the Petrosys data loader format so your users can run the data load without having to copy and paste data into the expected format.

It is not just limited to reformatting from one Excel format to another Excel format. For example, you could write a script to reformat an IHS 297 ascii file and be able to load it directly using existing data loaders.

Example Interface:

IMPORT - Well Header

Well Header importer

Input file: No file chosen

Input convert options: **IHS 297** ▼

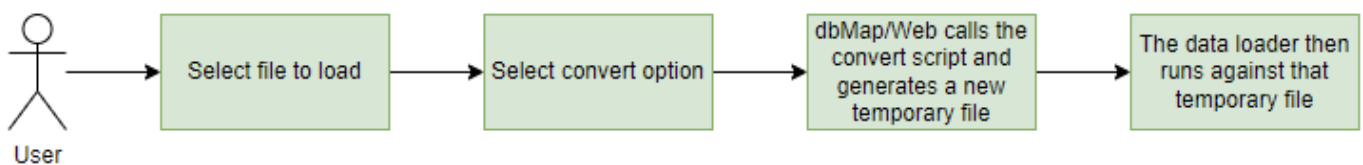
Merge option: Keep all existing data

Trial run: ☐

Generate detailed diagnostics file? ☐

How does it work

- The site administrator creates a program or a script and places it on the web server.
- When importing, the end user selects a conversion option to use.
- Behind the scenes on the server, after the input data file has been uploaded to the server, the conversion script or application is run to create a new temporary file. That temporary file is then passed to the data loader rather than the original file that was uploaded.



For more information on how this can be setup at your site see the Help topic 'dbMap/Web – Data Exchange – Input File Convert Options'.

Petrosys professional services can also create reformatting scripts. Please contact Petrosys if you would like to discuss consulting to create reformatting scripts.

Highlight features introduced in 2021.1**Overview**

dbMap/Web 2021.1 sees the introduction of deeper support for more parts of the PPDM model including Core / Sample Analysis, dedicated screens for specific well test types, better support for Paly/Paleo data as well as some new data loaders. In addition this release also makes available some extensions to all clients using the Wells module:

- FracDB – manage well stimulation data
- Well Spec Card – manage the systematic capture, approval and publishing of pre-drill well data.

Petrosys is a long term member of the PPDM community and we are pleased to also announce that dbMap/Web has been recertified as being PPDM Gold compliant.

Dedicated Well Test Screens

This release sees a collection of new dedicated well test screens that are tailored based on the different test types. Existing well test data can still be accessed via a generic well test screen, but clients can choose to start capturing their well tests in the dedicated screens.

The test types with tailored screens are:

RFT

[New RFT](#)

Run num	Test date	Source	Remark
1	01-SEP-2021	Petrosys Pty Ltd - Australia	

View 1 - 1 of 1

[Edit](#) [New](#) [Delete](#) [Attachments](#)

RFT Run

Test type: Repeat Formation Test

Test subtype: RFT-STRADDLE PACKER

Test date: 01-SEP-2021

Run number: 1

Source: Petrosys Pty Ltd - Australia

Remarks:

Gauges

Gauge ID	Gauge type	Preferred gauge
1	Q1	Quartz

New Pretest

File number	Packer top depth (m)	Packer bottom depth (m)	Depth (m)	Test result	Remark
1	100.00	200.00		Good	

View 1 - 1 of 1

[Metric/Imperial](#) [Edit](#) [New](#) [Delete](#)

Packer top depth: 100.00 m

Packer bottom depth: 200.00 m

Depth: m

File number: 1

Drawdown volume: cc

Test result: Good

Fluid type: Oil

Test duration: min

Rate change qualifier:

Rate change: kPa/min

Remark:

Gauge Readings

Gauge ID	Gauge type	Hydrostatic pressure before (kPa)	Initial drawdown (kPa)	Final build up (kPa)	Formation pressure (kPa)	Hydrostatic pressure after (kPa)	Temperature (°C)	Mobility (mdDp)
1	Q1	40000.00					120.00	

DST

Test Details

Test number	1	Top depth (logger)	1000.00 m
Test type	Drillstem Test	Base depth (logger)	1030.00 m
Test subtype	DST-HOOK WALL PACKER	Top depth (driller)	m
Test date	02-SEP-2021	Base depth (driller)	m
Source	Petrosys Pty Ltd - Australia	Test result	Lost seal
Discovery type	Condensate	Misrun reason	
Contractor		Remarks	
Fluid recovery			

Flow Results

	Flow	Temperature
Oil	m3/d	°C
Gas	cm3/d	
Condensate	m3/d	°C
Water	m3/d	°C

Oil API	*
No gas to surface	
Condensate API	*
R _w	Qm

	Length	R _w	Temperature
Water cushion	m	Qm	°C
Mud filtrate		Qm	°C

Top choke	mm
Bottom choke	mm
Fluid time to surface	min
Surface flow pressure	kPaa
Hole temperature	°C
Hole temperature depth	m
Bottom gauge depth	m

Pressure Buildup

	Time	Initial Pressure	Final Pressure
First flow	min	kPaa	kPaa
First shut-in	min		kPaa
Second flow	min	kPaa	kPaa
Second shut-in	min		kPaa
Third flow	min	kPaa	kPaa
Third shut-in	min		kPaa

Pressure Tests

New Pressure Tests

	Test date	Test type
1	03-SEP-2021	Pressure Build-up

View 1 - 1 of 1

Metric/Imperial

Edit

New

Delete

Attachments

Test date

03-SEP-2021

Test type

Pressure Build-up

Source

Petrosys Pty Ltd - Australia

Fluid type

Condensate

Contractor

Oil flow

m3/d

Gas flow

m3/d

Condensate flow

m3/d

Water flow

m3/d

Production string

Production string installed date

Production string pulled date

Reported reservoir temperature

°C

Flowing wellhead pressure

kPaa

Flow duration

hr

Shut in duration

hr

Flowing bottom hole pressure

kPaa

Final shut in bottom hole pressure

kPaa

Gauge depth

m

Remarks

New Interpretation

	Interpreter	Interpretation date
1	Petrosys Pty Ltd.	03-SEP-2021

View 1 - 1 of 1

Metric/Imperial

Edit

New

Delete

Attachments

Interpretation

Interpreter

Petrosys Pty Ltd.

Interpretation date

03-SEP-2021

Pressure depth (SS)

m

MPP depth (SS)

m

Datum depth (SS)

m

Permeability Details

Permeability (k)

md

Thickness (h)

m

Permeability-Thickness (kh)

0.00

md m

kh confidence

Porosity

Gradient Surveys

New Gradient Surveys

Test date

Test type

1

04-SEP-20

Static Gradient Survey

View 1 - 1 of 1

Metric/Imperial

Edit

New

Delete

Attachments

Test type

Static Gradient Survey

Test date

04-SEP-2021

Source

Petrosys Pty Ltd - Australia

Fluid type

Condensate

Contractor

Oil flow

m3/d

Gas flow

m3m3/d

Condensate flow

m3/d

Water flow

m3/d

Production string

Production string installed date

Production string pulled date

Reported reservoir temperature

°C

Flowing wellhead pressure

kPaa

Flow duration

hr

Shut in duration

hr

Flowing bottom hole pressure

kPaa

Final shut in bottom hole pressure

kPaa

Gauge depth

m

Remarks

Detailed Test Data

	Pressure (kPaa)	Temperature (°C)	(MD) Measured depth (KB) (m)	(TVD) True vertical depth (SS) (m)	Remark	(MD) Pressure gradient (kPa/m)	(MD) Temperature gradient (°C/km)	(TVD) Pressure gradient (kPa/m)	(TVD) Temperature gradient (°C/km)
1	40000.00	120.00	1000.00	-975.00					

Sonolog

New Sonolog

Test date

06-SEP-2021

View 1 - 1 of 1

Metric/Imperial

Edit

New

Delete

Attachments

Top depth (logger)

1000.00

m

Test date

06-SEP-2021

Source

Petrosys Pty Ltd - Australia

Remarks

Production string

Production string installed date

Production string pulled date

End of tubing depth

m

Water out from test

%

Midpoint of perforations

m

Water out from sample

%

Fluid depth from surface

m

Water out for calculation

%

CH/Annulus pressure

kPa

Fluid in Annulus

Condensate

Oil gradient

kPa/m

Sumped

Water gradient

kPa/m

Estimated Bottom hole Pressure

kPa

Status

Shut-in

LET

New LET

	Test date	Gas flow (mmcfd)	Condensate flow (bbl/d)	Water flow (bbl/d)	Flowing well head pressure (psia)	Choke size (cm)	Remark
1	09-SEP-2021						

View 1 - 1 of 1

Metrio/Imperial

Edit

New

Delete

Attachments

Test date

09-SEP-2021

Source

Petrosys Pty Ltd - Australia

Gas flow

mmcfd

Condensate flow

m3/d

Water flow

m3/d

Flowing well head pressure

kPaa

Back pressure type

Flare

Production string

Production string installed date

Production string pulled date

Choke size

mm

Choke percent open

%

Commingling type

UNKNOWN

Remarks

MPLT

New MPLT

	Test date	Logging company
1	09-SEP-20	

View 1 - 1 of 1

Metrio/Imperial

Edit

New

Delete

Attachments

Test date

09-SEP-2021

Source

Petrosys Pty Ltd - Australia

Oil production rate (field)

m3/d

Gas production rate (field)

Trace

mmcfd

Condensate production rate (field)

Trace

m3/d

Water production rate (field)

m3/d

Flowing tubing pressure

40000.00

kPaa

Shut in tubing pressure

kPaa

Pre-test shut in time

10.00

min

Logging company

Interpreter

Remark

Flowing Intervals

Run No.	Top depth (m)	Base depth (m)	Oil rate (m3/d)	Gas rate (m3/d)	Condensate rate (m3/d)	Water rate (m3/d)	Pressure (kPaa)	Temperature (°C)	Delta temperature (°C)	Choke opening (mm)	Choke opening (%)	Ren
1	1	1100.00	1140.00					120.00				

Shut In Intervals

Top depth (m)	Base depth (m)	Oil rate (m3/d)	Gas rate (m3/d)	Condensate rate (m3/d)	Water rate (m3/d)	Pressure (kPaa)	Temperature (°C)	Delta temperature (°C)	Remark
1	1200.00	1240.00					110.00		

Core / Sample Analysis

Many new core analysis screens are now available to all clients with our PPDM Wells module. The analysis screens are:

- Conventional core analysis
 - Routine core analysis
 - Continuous core analysis
- Geochemistry
 - Rock evaluation
 - Vitrinite
 - Liquid chromatography
 - Lithology
 - Saturate
 - Elemental
- Coal core analysis *(Previously already available to some clients)*
 - Adsorption isotherm
 - Desorption
 - Gas composition
 - Isotope
 - Petrology
 - Proximate
 - Rock mechanics
 - Ultimate

Paly / Paleo data screens

The list of fields that can be captured on our Paly/Paleo have been extended to better support key data. Key areas of Paly/Paleo information we capture includes:

- Interpretations

General		Record info	
Core			
Core number		Well core type	
Driller top depth		Logger top depth	
Driller base depth		Logger base depth	
Sample			
Related sample	CUTTINGS	Sample source	Cuttings
Reported core #		Core type	Sidewall Core
Driller top depth		Logger top depth	
Driller base depth		Logger base depth	
Depths			
		Logger top depth	1100.00m
		Logger base depth	1120.00m
Age / formation			
Stage (from)	Cenozoic	Stage (to)	
Formation (from)		Formation (to)	
Paleo zone			
Type	Zone	Description	Environment
Dinoflagellate			Inner Shelf
			//
Micropaleontology			//
			//
			//
Qualifier			
Microplankton ratio		Microplankton diversity	
Confidence		Source	Petrosys Pty Ltd - Australia
Analyst		Preferred?	Y
Remark			

- Lithology information including optional links to well cores.

General		Record info	
Core			
Core number		Well core type	
Driller top depth		Logger top depth	
Driller base depth		Logger base depth	
Sample			
Sample source	Cuttings	Core type	Sidewall Core
Reported core #			
		Logger top depth	m
		Logger base depth	m
Source		Composite sample?	✗
Remark			

- Fossil information including species and abundance

General		Record info	
Fossil	Alangium spp.	Fossil group	Sporites/Spore
Qualifier		Depth	m
Confidence		Abundance count	
Preservation type		Preservation quality	Good
Fossil type		Preferred?	
Source	Petrosys Pty Ltd - Australia		
Remark			

- Details of the report and the analyst who created the report.

General		Record info	
Report title	1		
Analysis start date	01-SEP-2021	Analysis end date	04-SEP-2021
Report date	07-SEP-2021	Reference num	1
Source	Petrosys Pty Ltd - Australia	Summary type	
Analyst			
Diversity count		Preservation quality	Good
Remark			

Data Exchange – Data loaders

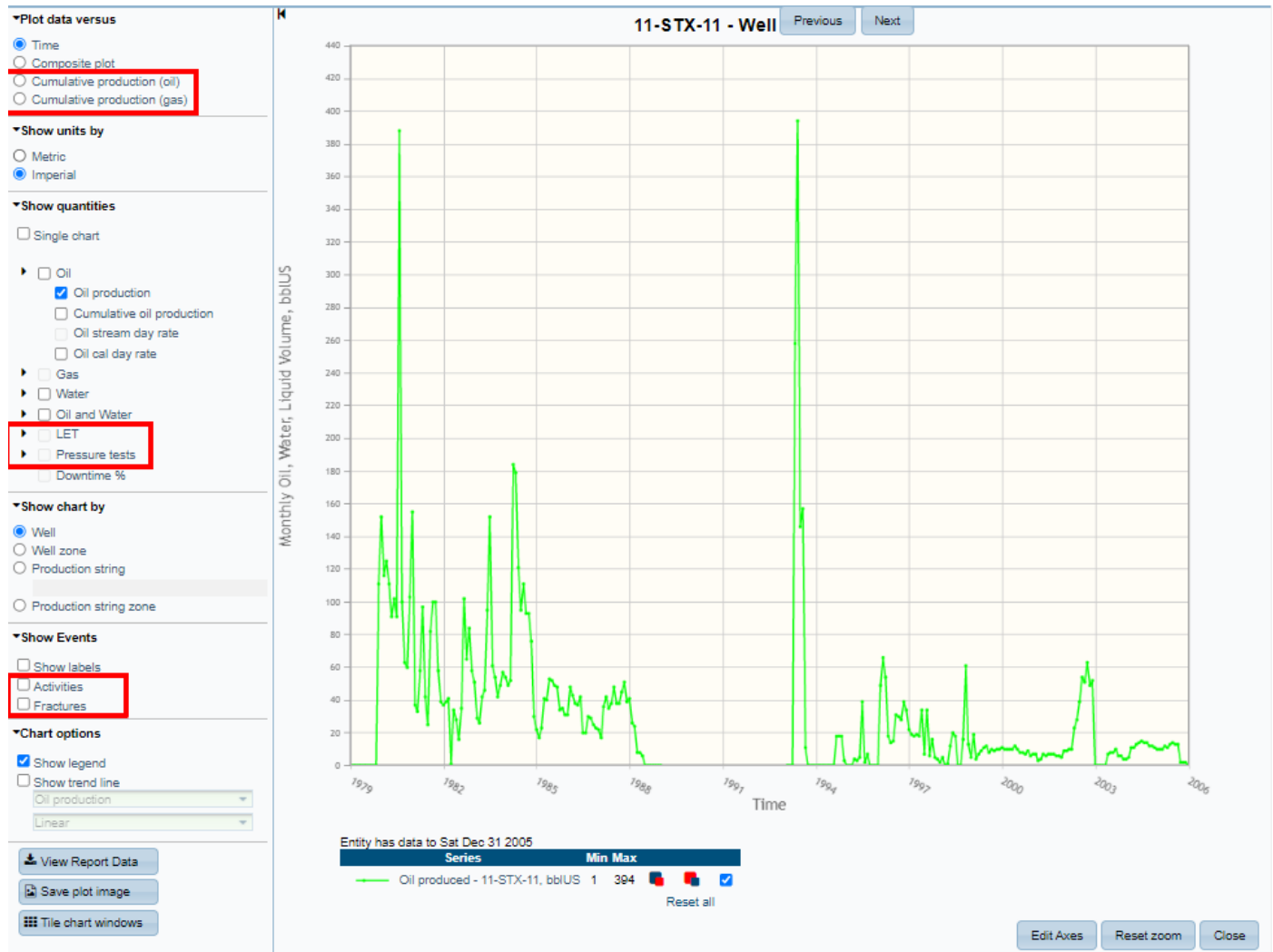
Multiple new data loaders are now available for importing Excel files for the following data types:

- Core Analysis
 - Routine core analysis
 - Samples
 - Adsorption isotherm
 - Desorption
 - Gas composition
 - Isotope
 - Petrology
 - Proximate
 - Ultimate
- Paleo summaries
- Well Tests
 - Gradient Survey
 - MPLT
 - RFT

Production Chart Improvements

dbMap/Web production charts have been extended to allow plotting of additional information alongside the production data. Changes include:

- Charting of data against cumulative oil or gas production
- Plot oil, gas and water calendar stream day rates
- Plot LET data
- Plot well activities and fracture data
- Group data by production string or production string zone



Well Shows

A new consolidated screen for viewing and editing Well shows data is now available that allows the depth information and show attributes to be edited at the same time. The list of show attributes dynamically change based on the show type.

New Shows

	Source	Show type	Top depth (m)	Base depth (m)
1	Petrosys Pty Ltd - Australia	Oil	1100.00	1140.00

View 1 - 1 of 1

Metric/Imperial **Edit** **New** **Delete**

Source	Petrosys Pty Ltd - Australia	Reservoir?	Y
Show type	Oil	Basin	Cooper
Top depth	1100.00 m	Top formation	
Base depth	1140.00 m	Base formation	
Sample type	Crude Oil	Source document	
Show symbol	0 <input type="radio"/>	Lithology	
Remarks	Test data		

C1 (ppm) low		Fluorescence appearance high	
C1 (ppm) high		Brightness of Fluorescence low	
C2+ (ppm) low		Brightness of Fluorescence high	
C2+ (ppm) high		Type of out low	
Porosity low		Type of out high	
Porosity high		Residue on spot plate low	
% with fluorescence low		Residue on spot plate high	
% with fluorescence high		Show rating low	
Fluorescence appearance low		Show rating high	

Well Rig and Pad

Dedicated screens are now available for linking wells to Rigs and Pads and to capture the well specific Rig & Pad information.

General **Remarks** **Record info**

Rig

Rig name	BIG RIG	Rig code	
Operator		KB height	m
Rig type		Commission date	

Source	Petrosys Pty Ltd - Australia	Rig on site date	01-SEP-2021
		Rig release date	25-SEP-2021

Elevations

Reference datum	KB	Depth datum	
Kelly bushing		Derrick floor	m
Rotary table		Other elevation	m

FracDB

The FracDB extension to our Wells module manages well stimulation data with an emphasis on the needs of the operator. With the 2021.1 release this functionality become available to all of our PPDM Wells based clients.

Well Spec Card

The Well Spec Card extension manage the systematic capture, approval and publishing of pre-drill well data. Information on proposed wells can be captured and go through an approval process with email notifications when actions are required. Once fully approved a PDF report can be generated and sent to the drilling team.

Petrosys PRO new data types available for PPDM clients – Stacking velocities, Residuals & Statx

Along with the dbMap/Web changes, there are also some changes coming to the dbMap PPDM database for the Petrosys PRO desktop application.

Support for Stacking velocities and Residuals is now available for PPDM clients.

The Petrosys Statx module is now available for purchase by PPDM clients. Statx is an application that manages a database of corrections for near surface seismic effects.

dbMap/Web continues to be PPDM Gold Compliant

Petrosys is pleased to announce that dbMap/Web has recently been recertified as having Gold Level PPDM compliance. Petrosys has been a member of PPDM for more than 20 years and we continue to see significant value in basing our data management products around the PPDM standard.

Petrosys Professional Services

The Petrosys Professional Services team is highly experienced with PPDM and Oil Industry workflows. We are always happy to discuss options for prioritizing specific functionality with funding, for example:

- Managing additional data types
- Creating additional data loaders
- Tailoring dashboards.

Please contact Petrosys support if you would like to discuss.

Detailed Release Notes Summary dbMap/Web 2021.2.1

Enhancements

dbMap/Web - Administration

[79387](#) Simpler workflow for deploying data loaders

dbMap/Web - Client

[80491](#) Well header data loader - Added support for client specific columns (Santos)

[80530](#) New security for editing well interpretation data (Santos)

[80695](#) Well Header data loader - Match by Capricorn UWI (WELL_NUM) before WELL_NAME (Capricorn only)

dbMap/Web - General

[80627](#) Added links between seismic surveys & permits

[80685](#) Formation tops loader - support added for importing more metadata values and fixed preferred flag

[80791](#) Data loaders - Treat indicator flags such as PREFERRED_IND & ACTIVE_IND as case insensitive

[80663](#) Added support for Obligations

[80799](#) Added support for permits in well and seismic cross reference options

[80811](#) Data entry screens now have better support for limiting length of data entered for UTF-8 databases

[80668](#) Data loader - Well alias template - Added sample data

[80648](#) Data loading framework - Treat as an error if input file doesn't have any rows of data

[79549](#) FracDB - Added Service Company to R_PROPPANT_TYPE reference screen

[79590](#) FracDB Loader - Remove "*" from product name on the Product sheet

[79551](#) FracDB Loader - Treat "NA" as a missing value for numeric values

[80709](#) Potential RM Cron failure for Oracle 19c resolved

[77853](#) Upgraded GeoServer used for dbMap/Web mapping

[80616](#) Well header data loader - Update template to be new-style with dynamic units selection

Detailed Release Notes Summary dbMap/Web 2021.2.1

Bug Fixes

dbMap/Web - General

- [80747](#) Production Chart - Plot Stream Day Rate as zero when volume is zero/blank
- [80721](#) Palynology loader correctly finds formations by name
- [80672](#) Well Header Loader - Fixed error running loader when PARENT_WELL_NUM is blank
- [80762](#) Seismic Line - Coordinates - Fixed error when filtering by type
- [80761](#) Child Stratigraphic Units screen can be accessed via PRO
- [80680](#) Well Perforation Save as option no longer gives duplicate record error
- [80692](#) Well header data loader - Allow ROW_QUALITY to be updated for existing wells
- [80797](#) Paleo Summary Loader - Now supports more flexible linking of Lithology Sample to Well Core
- [80702](#) FracDB Loader - Null pointer exception has been fixed
- [80677](#) Quality computation allows search term to be entered

dbMap/Web - PLDB

- [80469](#) PLDB - Correct MEPS label shown on prospect resources economics screen

Petrosys Release dbMap/Web 2021.2.1

Detailed Release Notes

[dbMap/Web - Administration](#) [Enhancements](#)

Simpler workflow for deploying data loaders

79387

Installing a new version of dbMap/Web would typically involve some administrative steps to place some files in a certain location to make the latest version of data loaders available.

From this release going forward, many of those files are now directly included inside the dbMap/Web WAR file.

This release will require the loader directory to be updated, but going forward most changes to data loaders should not require separate steps to make available.

Related to this change, dbMap/Web now has better support for managing client specific versions of data loading template files. If a company modifies a template to customize it for their users, they can now supply that file to Petrosys to incorporate in future dbMap/Web versions delivered to them, or place in a directory where it will persist between dbMap/Web version upgrades. (Note that future enhancements to data loaders could require companies to modify their custom templates).

[dbMap/Web - Client](#) [Enhancements](#)

Well header data loader - Added support for client specific columns (Santos)

80491

The well header data loader has been extended to support loading the following Santos specific data values:

- Current operator
- Initial JV
- Current JV
- Admin. business unit
- Well intent

New security for editing well interpretation data (Santos)

80530

For Santos only, database and application changes have been made to support a new well security model for Formation tops and Reservoirs.

Well Header data loader - Match by Capricorn UWI (WELL_NUM) before WELL_NAME (Capricorn only)

80695

The well header data loader for Capricorn has been changed to attempt matching existing wells in the following order:

1. UWI
2. Capricorn UWI (WELL_NUM)
3. Well name

This supports the Capricorn UWI being searched for prior to the Well name search,

Added links between seismic surveys & permits 80627

dbMap/Web now supports creating links between Permits & Seismic surveys. Users can drilldown from a permit to see the linked seismic surveys and lines. The seismic survey and line lists can also be filtered by selecting a permit in the tree filter.

Formation tops loader - support added for importing more metadata values and fixed preferred flag 80685

The Formation tops loader now has the option to import Row quality, Active flag, Created by and Created date values. These columns are in the "Optional columns" worksheet of the import template spreadsheet and can be added to the Tops Input Data worksheet as needed. In addition, the Preferred pick column has been fixed so that it now loads data. Previously the Preferred pick values were ignored.

Data loaders - Treat indicator flags such as PREFERRED_IND & ACTIVE_IND as case insensitive 80791

Indicator flag columns such as PREFERRED_IND and ACTIVE_IND are now automatically converted to uppercase. This means lowercase 'y' and 'n' values will no longer need to be modified.

Added support for Obligations 80663

A new Obligations capability has been added to dbMap/Web. This capability allows companies to capture things they are required to during a well's life cycle and maintain a record of whether they have fulfilled the requirement.

Added support for permits in well and seismic cross reference options 80799

The Cross Reference filter on the Well and Seismic survey and Seismic line lists now support filtering based on a selection of permits.

Data entry screens now have better support for limiting length of data entered for UTF-8 databases 80811

When dbMap/Web is running against a database using a UTF-8 character set, in some cases users were allowed to type more characters into a data field than could be stored in the database. Users would then receive an error message when attempting to save the data. dbMap/Web has been updated on how we determine the number of characters that can be entered to limit users entering too many characters in the user interface.

Data loader - Well alias template - Added sample data 80668

The well alias data loader template now includes some sample data to help guide users.

Data loading framework - Treat as an error if input file doesn't have any rows of data 80648

A user may sometimes select the wrong file to be loaded without any data, for example selecting a template file where no data has been added.

The new-style data loaders will now report an error to make it easier to see if a file with no data was loaded.

FracDB - Added Service Company to R_PROPPANT_TYPE reference screen 79549

It is now possible to specify the service company on the reference screen for editing Proppant types. This is used as part of the FracDB module.

FracDB Loader - Remove "*" from product name on the Product sheet

79590

In some cases the codes and names on the product sheet for Frac data would contain a trailing "*" character. These characters are not actual data but intended by the service company to highlight certain entries to readers of a report. The FracDB loader has been updated to ignore trailing '*' characters in product codes and names.

FracDB Loader - Treat "NA" as a missing value for numeric values

79551

The FracDB loader has been updated to treat "NA" as a missing value if it is found in spreadsheet cells where a numeric value is expected.

Pontential RM Cron failure for Oracle 19c resolved

80709

A potential failure of the Records Management (RM) cron job to catalog files overnight for Oracle 19c databases has been resolved. Previously, if there were a large number (500,000) files to catalog, an Oracle 19c database could run out of temporary tablespace due to query optimization differences compared with earlier versions of Oracle.

Upgraded GeoServer used for dbMap/Web mapping

77853

This release includes an upgrade to the latest version of GeoServer which is used as part of the mapping in dbMap/Web.

Notes on upgrading GeoServer as part of the release are included in the installation guide.

Well header data loader - Update template to be new-style with dynamic units selection

80616

The well header data loader has been upgrade to use a new-style template for loading data. It supports the units of the data being specified at the top of the file, as well as using the standard styling available on our other new data loaders.

In addition to the template change, the loader now supports loading the following additional data values:

- Surface location source
- Surface location confidence/quality
- Bottom hole location source
- Bottom hole location confidence/quality

dbMap/Web - General

Bug Fixes

Production Chart - Plot Stream Day Rate as zero when volume is zero/blank

80747

On the well production chart, null values are now treated as '0'.

Palynology loader correctly finds formations by name

80721

The palynology data loader was reporting an error when matching on formations due to finding duplicates where a formation and play interval had the same name. The loader has been changed to only include formations in the search.

Well Header Loader - Fixed error running loader when PARENT_WELL_NUM is blank

80672

The well header data loader supports an optional column 'PARENT_WELL_NUM'. If a user included this optional column in their data load but did not populate the column with a value it resulted in an error for that row. This has been fixed so blank values are allowed.

Seismic Line - Coordinates - Fixed error when filtering by type

80762

On the seismic line coordinates screen, if a user filtered by the type of coordinate (eg. CMP, Source, etc) in the tree filter an error message would be displayed and no data would be shown. This has been fixed so the filter correct works and displays matching data.

Child Stratigraphic Units screen can be accessed via PRO 80761

If dbMap/Web was launched from within Petrosys PRO, it was not possible to navigate to the 'Child Stratigraphic Units' screen. It was possible in a standard web browser. This has been fixed so users can also access the screen from within Petrosys PRO.

Well Perforation Save as option no longer gives duplicate record error

80680

The Well Perforations panel "Save as" option no longer gives an error about another record existing in the database with the same identifier.

Well header data loader - Allow ROW_QUALITY to be updated for existing wells

80692

The well header data loader previously allowed the ROW_QUALITY column to be loaded for new wells, but it did not support the ROW_QUALITY value being updated if the user wanted to update the confidence value on existing wells.

ROW_QUALITY is now used by the data loader irrespective of inserting a new well, or updating an existing well.

Paleo Summary Loader - Now supports more flexible linking of Lithology Sample to Well Core

80797

The palynology data loader has been changed so a matching Source is no longer required when finding a Well Core record to link to a lithology sample.

FracDB Loader - Null pointer exception has been fixed

80702

The FracDB loader could sometimes have an error when processing particular data and resulting in a 'NullPointerException' being shown in the data load results log. This has been fixed.

Quality computation allows search term to be entered

80677

Fixed a bug preventing the "Quality computation" option being used if a search terms was entered in the main "Common fields" search input.

dbMap/Web - PLDB

Bug Fixes

PLDB - Correct MEPS label shown on prospect resources economics screen

80469

Fixed a bug causing an incorrect MEPS label to be shown on the prospect resources economics screen.

Detailed Release Notes Summary dbMap/Web 2021.2

Enhancements

dbMap - Client

- [80470](#) dbMap Wells - Performance improvement when updating well headers (Origin only)
- [80502](#) PLDB reports re-migrated to fix column aliases (Santos only)
- [80395](#) FRAC_STAGE_SANDS_VW database view fixed (Santos only)

dbMap/Web - Client

- [80468](#) Enable SEIS_LINE_GEOMS foreign key constraint to SEIS_LINE (Santos only)
- [80583](#) PS_GET_FORMATION database function improvements
- [80543](#) New custom fields added to well header (Capricorn)
- [80542](#) Well header loader - support for matching parent well on Capricorn UWI added

dbMap/Web - General

- [80036](#) Data Exchange - New framework - Reservoir summaries loader
- [80492](#) Data Exchange - New framework - Well aliases loader
- [80525](#) Well header data loader - Add support for creating Pad name (SF_PAD) reference data
- [79480](#) Data Exchange - New framework - Directional Survey loader
- [76062](#) Data Exchange - Administrators can now write scripts to reformat input data file before loading
- [79579](#) Data Exchange - New framework - Checkshot survey loader
- [75501](#) Data Exchange - New framework - Formation tops loader
- [79550](#) FracDB - Reference data screen available for R_FRAC_STEP_ACTIVITY_TYPE
- [80632](#) Platform added to well header data screen
- [79276](#) Well Test RFT Rate of change - Qualifiers are now shown alongside the numeric value

Petrosys Release dbMap/Web 2021.2

Detailed Release Notes

[dbMap - Client](#) [Enhancements](#)

dbMap Wells - Performance improvement when updating well headers (Origin only) 80470

For Origin, a significant performance improvement has been achieved for updating well header details other than the well name, for wells that are linked to a large number of RM items. Previously changing any value on the well header would cause an update of links to RM items. It now only updates links to RM if the well name itself is modified.

PLDB reports re-migrated to fix column aliases (Santos only) 80502

The Santos migration to PPDM/Data Hub brought across existing Prospects & Leads (PLDB) reports, however there was a problem where column aliases did not retain double quotes around them, making some of the queries invalid. The PLDB queries have been re-migrated from the COOP database as part of the database upgrades for this version to fix this.

FRAC_STAGE_SANDS_VW database view fixed (Santos only) 80395

The FRAC_STAGE_SANDS_VW database view has been fixed and updated to support the new reservoir summaries structure for PPDM used by Santos.

[dbMap/Web - Client](#) [Enhancements](#)

Enable SEIS_LINE_GEOMS foreign key constraint to SEIS_LINE (Santos only) 80468

For Santos only, the database foreign key constraint from SEIS_LINE_GEOMS to SEIS_LINE has now been enabled, and any orphaned records deleted.

PS_GET_FORMATION database function improvements 80583

The database function PS_GET_FORMATION has had the following improvements:

- The input parameter i_nbr_tops can now be used to specify the maximum number of formation names returned, and has a default of 10. Previously it only return 1, or all formations.
- Additional input parameters have been added to support optional filtering by
- Fixed duplicate formations sometimes being reported.
- The output is truncated at 1000 characters, instead of giving an Oracle error when too many formations are found..

New custom fields added to well header (Capricorn) 80543

For Capricorn only, the well header now has new fields for Quadrant, Primary drilling & wireline contractors, and up to 5 Partner equity values.

The Well Failure Analysis loader has also been extended to support importing the fields.

Well header loader - support for matching parent well on Capricorn UWI added 80542

For Capricorn only, the well header loader has been updated to try matching the parent well based on the Capricorn UWI (PARENT_WELL_NUM) field if populated in the input spreadsheet.

Data Exchange - New framework - Reservoir summaries loader ⁸⁰⁰³⁶

A new data loader has been created for loading Reservoir summaries.

Data Exchange - New framework - Well aliases loader ⁸⁰⁴⁹²

A new data loader has been created for loading well aliases. It supports loading a list of aliases linked to wells by either a UWI or well name.

Well header data loader - Add support for creating Pad name (SF_PAD) reference data ⁸⁰⁵²⁵

The well header data loader can link wells to well pads. If a pad name is listed that does not currently exist, the loader will now create a pad(SF_PAD) record and link it to the well.

Data Exchange - New framework - Directional Survey loader ⁷⁹⁴⁸⁰

A new data loader has been created for loading directional surveys. It is based on our new data loading framework and includes several advances over the previous loader including:

- Better reporting of errors
- Reporting of progress and ability to cancel loading run.
- Ability to supply diagnostics to aid investigating any issues.

Data Exchange - Administrators can now write scripts to reformat input data file before loading ⁷⁶⁰⁶²

dbMap/Web data loaders expected input data files to be in a particular format. New functionality has been added to the framework to allow files to be converted on the fly to the expect format as they are loaded. An example use case is to support directly loading data provide by a service company in a different format.

To make use of the functionality, someone who is familiar with python or another programming language can write a script that converts a file in a different format into the expected format.

Petrosys professional services an also create these scripts.

If you are interested in more information on how this new functionality works, see the help topic 'dbMap/Web – Data Exchange – Input File Convert Options'.

Data Exchange - New framework - Checkshot survey loader ⁷⁹⁵⁷⁹

A new data loader has been created for loading checkshot surveys. It is based on our new data loading framework and includes several advances over the previous loader including:

- Better reporting of errors
- Reporting of progress and ability to cancel loading run.
- Ability to supply diagnostics to aid investigating any issues.

Data Exchange - New framework - Formation tops loader ⁷⁵⁵⁰¹

A new data loader has been created for loading formation tops. It is based on our new data loading framework and includes several advances over the previous loader including:

- Better reporting of errors
- Reporting of progress and ability to cancel loading run.
- Ability to supply diagnostics to aid investigating any issues.
- Calculating and populating TVD values if missing during the import.

FracDB - Reference data screen available for R_FRAC_STEP_ACTIVITY_TYPE

79550

A data screen for editing the list of Frac step activities types is now available under the Admin/Reference tables/PPDM menu.

Platform added to well header data screen

80632

Platform is now available on the well header screen to view & edit the platform assigned to a well. New reference screens have also been added to be able to create and edit Platform details and Platform types.

Well Test RFT Rate of change - Qualifiers are now shown alongside the numeric value

79276

The well test RFT screen Rate of change supports an optional qualifier being stored. For example to represent '<0.02' or '>0.01'. The qualifier is stored in a different column to the numeric value and previously was shown on the screen on a separate row.

The qualifier and the numeric value are now displayed on the data screen as a single value to the user. Values can be entered with a qualifier (e.g. '<0.02') and it will automatically be saved in the relevant columns.

The data loader for RFT data already supported this behaviour.

Detailed Release Notes Summary dbMap/Web 2021.1.7

Bug Fixes

dbMap/Web - General

[80510](#) Well path functions in dbMap/Web now return values consistent with PRO

dbMap/Web - PLDB

[80540](#) PLDB - Prospect Resources And Economics screen loads correctly

Petrosys Release dbMap/Web 2021.1.7

Detailed Release Notes

dbMap/Web - General

Bug Fixes

Well path functions in dbMap/Web now return values consistent with PRO

80510

Fixed bug with TVD calculations for wells that have multiple directional surveys with the same survey ID, so that the values now match PRO

dbMap/Web - PLDB

Bug Fixes

PLDB - Prospect Resources And Economics screen loads correctly

80540

Fixed a bug preventing the resources section on the "Prospects & Leads / Prospect Resources and Economics" screen from loading.

Detailed Release Notes Summary dbMap/Web 2021.1.6

Enhancements

dbMap/Web - Client

[80384](#) Cairn labels and logos have been changed to Capricorn (Capricorn)

dbMap/Web - General

[80412](#) Security updates for third party libraries

dbMap/Web - PLDB

[80404](#) PLDB - Drilling opportunities - CRS can be manually selected

Detailed Release Notes Summary dbMap/Web 2021.1.6

Bug Fixes

dbMap/Web - General

[80400](#) Well path functions in dbMap/Web return values consistent with PRO

Petrosys Release dbMap/Web 2021.1.6

Detailed Release Notes

[dbMap/Web - Client](#) [Enhancements](#)

Cairn labels and logos have been changed to Capricorn (Capricorn) 80384

Labels and logos referencing Cairn Energy have been changed to Capricorn.

[dbMap/Web - General](#) [Enhancements](#)

Security updates for third party libraries 80412

A number of third party libraries have been updated to include the latest security updates.

[dbMap/Web - General](#) [Bug Fixes](#)

Well path functions in dbMap/Web return values consistent with PRO 80400

Fixed a bug in dbMap/Web that was causing TVD calculations to return a different value compared to PRO.

[dbMap/Web - PLDB](#) [Enhancements](#)

PLDB - Drilling opportunities - CRS can be manually selected 80404

Fixed a bug on the "Prospects & Leads / Drilling Opportunities" screen that was causing the Geographic CRS to be read only.

Detailed Release Notes Summary dbMap/Web 2021.1.5

Bug Fixes

dbMap/Web - General

[80409](#) Upgraded log4j library to version 2.16

Petrosys Release dbMap/Web 2021.1.5

Detailed Release Notes

dbMap/Web - General

Bug Fixes

Upgraded log4j library to version 2.16

80409

log4j 2 library has been upgraded to version 2.16 which fully disables functionality causing a security vulnerability - See CVE-2021-45046 for more details.

Detailed Release Notes Summary dbMap/Web 2021.1.4

Bug Fixes

dbMap/Web - General

[80394](#) Upgraded log4j 2 library

Petrosys Release dbMap/Web 2021.1.4

Detailed Release Notes

dbMap/Web - General

Bug Fixes

Upgraded log4j 2 library

80394

log4j 2 library has been upgraded to version 2.15 which disables functionality causing a security vulnerability - See CVE-2021-44228 for more details.

Detailed Release Notes Summary dbMap/Web 2021.1.3

Enhancements

dbMap - Client

[80373](#) Well test DST database view now returns fluid recovery values

dbMap/Web - Client

[80316](#) PLDB Economic Extensions (Triangle Energy)

dbMap/Web - General

[80050](#) Gradient Survey Well Test Loader

[80041](#) MPLT Well Test Loader

[80170](#) Routine Core Analysis Loader - Added support for more Well Core related columns

[80091](#) RFT Well Test Loader - Prevent loading spreadsheet if matching data exists

[80271](#) Paleo Summary Loader - Allow multiple interpretations for a single sample

dbMap/Web - PLDB

[80382](#) PLDB - Attachments enabled on chronology screens

Detailed Release Notes Summary dbMap/Web 2021.1.3

Bug Fixes

dbMap/Web - General

- [80185](#) Well Header Loader - TD basin and formation can be loaded using names instead of IDs
- [80223](#) Paleo Summary Loader - Does not insert missing SOURCE reference values

Petrosys Release dbMap/Web 2021.1.3

Detailed Release Notes

[dbMap - Client](#) [Enhancements](#)

Well test DST database view now returns fluid recovery values 80373

The PPDM38 well test DST database view PS_WT_PRE_COMPLTN_PRESS_TEST now returns Fluid recovery values. Previously the FLUID_RECOVERY_DESC column values were always NULL.

[dbMap/Web - Client](#) [Enhancements](#)

PLDB Economic Extensions (Triangle Energy) 80316

Additional fields have been added to the "Economics" tabs on the Prospect header and Prospect Chronology screens.

[dbMap/Web - General](#) [Enhancements](#)

Gradient Survey Well Test Loader 80050

Added a data exchange loaders to support loading Gradient Survey data

MPLT Well Test Loader 80041

Added a data exchange loaders to support loading MPLT data

Routine Core Analysis Loader - Added support for more Well Core related columns 80170

The Routine Core Analysis Loader has been extended to support additional columns related to well core:

- Recovered amount and associated unit
- Total shot count
- Shot recovered
- Lithology description
- Well core remark

RFT Well Test Loader - Prevent loading spreadsheet if matching data exists 80091

The RFT Well Test loader has been modified to prevent data being loaded if matching data already exists. The loader will also only update the database if all rows in the spreadsheet can be loaded without error.

Paleo Summary Loader - Allow multiple interpretations for a single sample 80271

The Paleo Summary data loader has been modified to allow more than one interpretation to be loaded against a Lith Sample.

Well Header Loader - TD basin and formation can be loaded using names instead of IDs

80185

Fixed a bug causing the well header loader to only accept IDs for the TD_STRAT_NAME_SET_ID and TD_STRAT_UNIT_ID input columns. Basin and formation names can now be used to set these fields.

Paleo Summary Loader - Does not insert missing SOURCE reference values

80223

Fixed a bug preventing the Paleo Summary Loader from completing successfully if an imported SOURCE value was missing in the database. The loader has also been changed to not insert missing SOURCE values.

PLDB - Attachments enabled on chronology screens

80382

The attachments options has been enabled on both the prospect and target chronology screens.

Detailed Release Notes Summary dbMap/Web 2021.1.2

Enhancements

dbMap - Client

[80086](#) Routine Core Analysis view now available

dbMap/Web - Client

[80069](#) PLDB - Commercial evaluation event added with additional economic attributes (Beach)

[80320](#) Formation TVDs now computed for non-vertical wells without directional surveys (Santos only)

[78669](#) WFA - Changed the use of UWI/Well number to allow control the well identifier (Cairn)

[80307](#) FracDB - Added support for other service companies (Origin)

[80208](#) The "What's New" screen has been enabled by default (Santos)

Detailed Release Notes Summary dbMap/Web 2021.1.2

Bug Fixes

dbMap/Web - Client

[80265](#) Well header JV names are now shown instead of IDs (Santos only)

dbMap/Web - General

[80310](#) Formation tops does not show a TVDSS value when the TVD is blank

dbMap/Web - PLDB

[80281](#) PLDB - Resource computation - Metric/Imperial button converts all values

Petrosys Release dbMap/Web 2021.1.2

Detailed Release Notes

[dbMap - Client](#) [Enhancements](#)

Routine Core Analysis view now available

80086

The new database view PS_ROUTINE_CORE_ANALYSIS is now available to enable simpler querying of the Routine core analysis data in PPDM.

[dbMap/Web - Client](#) [Enhancements](#)

PLDB - Commercial evaluation event added with additional economic attributes (Beach)

80069

A "commercial evaluation" event has been added to the "Prospects & Leads / Prospect Event" screen, with support for additional economic attributes.

Formation TVDs now computed for non-vertical wells without directional surveys (Santos only)

80320

For Santos only, formation tops TVD values are now computed for wells that did not have a preferred directional survey and weren't flagged as vertical wells.

WFA - Changed the use of UWI/Well number to allow control the well identifier (Cairn)

78669

Change the use of "Well number" to be used as the main unique identifier when loading WFA data against wells. The Field has been added to lists/screens and labelled as "Cairn UWI".

FracDB - Added support for other service companies (Origin)

80307

Service company selection on FracDB screens has been changed to lookup companies that are configured as having fracking service. The same selection is also available when running the FracDB data loader.

The "What's New" screen has been enabled by default (Santos)

80208

Enabled the "What's New" feature in the Santos Data Hub configuration.

[dbMap/Web - Client](#) [Bug Fixes](#)

Well header JV names are now shown instead of IDs (Santos only)

80265

For Santos only, the dbMap well header now always shows JV names. Previously if a JV was flagged as inactive, it showed the ID of the JV instead of the name.

Formation tops does not show a TVDSS value when the TVD is blank

80310

Fixed a bug causing the TVD SS values on the "Wells / Tops" screen to display as "1" when the associated TVD value was blank.

PLDB - Resource computation - Metric/Imperial button converts all values

80281

Fixed a bug preventing values greater than 1,000 from being toggled between metric and imperial units on the Prospects & Leads Resource Computation screen.

Detailed Release Notes Summary dbMap/Web 2021.1.1

Enhancements

dbMap/Web - Client

[79967](#) dbMap PPDM3.8 - Well Production data acquisition flag is not kept up to date

dbMap/Web - General

[79405](#) Added a summary report option to selected data types lists

[79903](#) Data loading - General support for missing values for numeric fields

Detailed Release Notes Summary dbMap/Web 2021.1.1

Bug Fixes

dbMap/Web - Client

[79934](#) RFT - Added Repeatability and Quality fields to screen (Santos)

dbMap/Web - General

[76901](#) Fixed display of Permits with an ID that contained a reserved character

[79916](#) dbMap PPDM3.8 - RFT Well tests - Add test type to list

[80108](#) FracDB Loader - PPA values containing a trailing space are correctly handled

[80127](#) RCA Loader - Core analysis details are populated by the loader

[79963](#) Text fields correctly handle values with double quotes

Petrosys Release dbMap/Web 2021.1.1

Detailed Release Notes

[dbMap/Web - Client](#) [Enhancements](#)

dbMap PPDM3.8 - Well Production data acquisition flag is not kept up to date 79967

The data acquisition flag for Well production data on the dbMap PPDM3.8 Well header dialog is now automatically set to Y when production data is created for a well. Previously it was not set and it would give an error when trying to edit a Well header when the acquisition flags were not being modified.

[dbMap/Web - Client](#) [Bug Fixes](#)

RFT - Added Repeatability and Quality fields to screen (Santos) 79934

Adding Repeatability and Quality fields to the "Wells / RFT" screen.

[dbMap/Web - General](#) [Enhancements](#)

Added a summary report option to selected data types lists 79405

A "Summary Report" option has been added to the Cores, Paly/Paleo, Production and Well Test screens. The option will only be shown if a reports exist with the following names:

- Summary Report: Core
- Summary Report: Paleo
- Summary Report: Production
- Summary Report: Well Test DST
- Summary Report: Well Test Gradient Survey
- Summary Report: Well Test LET
- Summary Report: Well Test MPLT
- Summary Report: Well Test Pressure Tests
- Summary Report: Well Test RFT
- Summary Report: Well Test Sonolog

Data loading - General support for missing values for numeric fields 79903

Special functionality has been added when processing numeric values for missing values our newer data loaders such as well header & core analysis.

When special values are seen in the input data such as 'NA', 'N/A', and '-' that will be treated as blank/missing values.

[dbMap/Web - General](#) [Bug Fixes](#)

Fixed display of Permits with an ID that contained a reserved character 76901

Fixed a bug on the Permits screen that prevented records being loaded if the ID column contained a colon.

dbMap PPDM3.8 - RFT Well tests - Add test type to list 79916

Test type column has been added to the list on the RFT well test screen.

FracDB Loader - PPA values containing a trailing space are correctly handled 80108

Fixed a bug causing an error to be shown by the FracDB loader if the PPA (concentration) value contained a trailing space character.

RCA Loader - Core analysis details are populated by the loader 80127

Fixed a bug that was preventing "Grain density", "Oil saturation" and "Water saturation" from being populated by the routine core analysis (RCA) loader.

Text fields correctly handle values with double quotes 79963

Fixed a bug causing text values containing a double quote to be truncated at the quote character when editing.

Detailed Release Notes Summary dbMap/Web 2021.1

Enhancements

Configuration - Licensing

[79005](#) dbMap/Web 2021.1 licensing - New license file required

dbMap/Web - Administration

[79273](#) Age and sequence number have been added to the formation reference screen

[79796](#) Increased the size of stored queries to support 24,000 characters

dbMap/Web - Client

[79505](#) dbMap/Web now contains links to epSHARE data (Santos)

[78385](#) Updated WebGIS URL (Santos)

[79305](#) Wells / Casing/Liners - Hole depth caption changed to Section TD (CCED)

dbMap/Web - General

[77785](#) Added support for drillers and loggers depths

[79099](#) Data Exchange - Added routine core analysis data loader

[77829](#) Production charts - Additional options and data available to plot

[78673](#) Data Exchange - Added palynology data loader

[78140](#) Attachments are now supported for well perforations

[78139](#) Directional Survey / Survey points - Extra columns can now be added to the list

[77809](#) Improved support for oil & gas shows information

[77715](#) Improved user interface for managing well log data

[78242](#) Seismic processed lines are now available for advanced search

[78055](#) Mapping - The set of default base layers has been updated

[78926](#) Records Management can now preview Outlook .msg files

[79594](#) Added preferred indicator to well sample analysis grids

[74838](#) Added support for new Well Sample Analysis data types

[79296](#) All data type grids now include unit annotation in column labels

[79372](#) Data Exchange - Well header loader based on new framework

[77876](#) Directional Surveys and Checkshots screens now support attachments

[79844](#) FracDB - Added completion status to the Frac panel

[77441](#) Mapping - Objects can now be selected using a hand drawn polygon

[73011](#) Mapping functionality is now enabled when launching dbMap/Web screens from Petrosys PRO

[79627](#) New and updated report queries included in dbMap/Web 2021.1 release

[78935](#) Records Management can now preview zip files

[79528](#) Data loading framework - Multiple improvements supported for new data loaders

[79873](#) New screens for capturing detailed remarks for well logs and log curves

dbMap/Web - PLDB

[78623](#) Asset Type is now available as a filter on the PLDB Dashboard

[79300](#) PLDB - New compute method for Reserves to enter Sales gas

Detailed Release Notes Summary dbMap/Web 2021.1

Bug Fixes

dbMap/Web - Administration

- [78320](#) Change current user password functionality now supports passwords containing a space character
- [77089](#) Now able to load a new license file via the license error page
- [74608](#) Records Management - Improved error message when LibreOffice is not installed or configured on the server
- [75969](#) Runtime parameter support improved for complex queries

dbMap/Web - Client

- [78983](#) Production - Removed incorrect formatting of the production string number (Santos)

dbMap/Web - General

- [79147](#) Gas Composition - Sample ID can now be edited
- [79319](#) Seismic coordinates screen - Screen will now load if you navigate from survey->line->coordinates and then Line->coordinates
- [78147](#) Well Failure Analysis Data Loader - Can now load wells with a blank well status
- [78894](#) Wells Dashboard - Data population displays correct summary information
- [79146](#) Special HTML characters are now displayed correctly when contained in data on the Core Analysis screens
- [79222](#) Well log viewer: Added negative value warning when track scale set to logarithmic.
- [79082](#) Downhole diagram now displays shoe depths for casings
- [79151](#) Well log viewer: Mnemonics containing the string MD incorrectly appeared as a depth curve.
- [79335](#) Facilities - Can now edit records associated with lines and polygons
- [78343](#) Fixed incorrect TVD SS value displayed while adding a new formation top record.
- [78896](#) Formation and reservoir lookups are now sorted chronologically by default
- [79076](#) Mapping - Map now loads successfully if the user does not have any PLDB roles
- [77394](#) Records Management dashboard - Hover hint fixed for the counts showing the number of catalogued items
- [79875](#) Improvements to core analysis screens - Multiple user interface issues fixed

dbMap/Web - PLDB

- [79391](#) PLDB - Target dependencies screen now shows correct individual probability factors for targets with scenarios
- [78387](#) PLDB Dashboard - "Prospect by basin" number of prospects is now consistent between the data table and chart
- [78716](#) Mapping - PLDB Target layer can be displayed on the map
- [79431](#) PLDB - Filtering prospects by "Region/Country" now correctly limits the results

Petrosys Release dbMap/Web 2021.1

Detailed Release Notes

[Configuration - Licensing](#) [Enhancements](#)

dbMap/Web 2021.1 licensing - New license file required 79005

dbMap/Web 2021.1 requires a new license file. Please obtain your license file by logging on to the Petrosys Client Portal or contacting Petrosys Support.

[dbMap/Web - Administration](#) [Enhancements](#)

Age and sequence number have been added to the formation reference screen 79273

Age and sequence number have been added to the formation reference screen. When populated, these fields can now be used by people writing reports to list data in a particular order.

Increased the size of stored queries to support 24,000 characters 79796

The size of stored reports and queries in dbMap has been increased to support up to 24,000 characters.

[dbMap/Web - Administration](#) [Bug Fixes](#)

Change current user password functionality now supports passwords containing a space character 78320

The administration option to allow users to change their password would previously display an error message if the new password contained a space character. The option has been changed to support passwords that includes a space character.

Now able to load a new license file via the license error page 77089

Previously when you had an expired license, an error page would appear that included an option to upload a new license file but the upload would not succeed. The error screen has been fixed to successfully upload.

Records Management - Improved error message when LibreOffice is not installed or configured on the server 74608

Records Management makes use of LibreOffice installed on the server machine for some functionality. dbMap/Web now displays a more informative error message if LibreOffice is not installed or not configured correctly.

Runtime parameter support improved for complex queries 75969

The support for multiple runtime parameters with separators in complex user defined queries has been improved

[dbMap/Web - Client](#) [Enhancements](#)

dbMap/Web now contains links to epSHARE data (Santos) 79505

dbMap/Web has been updated to contain links to epSHARE data for multiple data types (Santos only).

Updated WebGIS URL (Santos)

78385

WebGIS links have been updated to use the client provided URL.

Wells / Casing/Liners - Hole depth caption changed to Section TD (CCED)

79305

The "Hole depth" label on the "Wells / Casing/Liners" screen has been changed to "Section TD".

dbMap/Web - Client

Bug Fixes

Production - Removed incorrect formatting of the production string number (Santos)

78983

Removed formatting on the production string number on the production screen. The formatting was previously causing the number to be displayed as "#####".

dbMap/Web - General

Enhancements

Added support for drillers and loggers depths

77785

Support has been added for the capture of both drillers and loggers depths throughout the application.

Data Exchange - Added routine core analysis data loader

79099

A new data exchange option has been added to load Routine Core Analysis data

Production charts - Additional options and data available to plot

77829

The production charts have been extended to allow plotting of additional information alongside the production data. Changes include:

- Charting of data against cumulative oil or gas production
- Plot oil, gas and water calendar stream day rates
- Plot LET data
- Plot well activities and fracture data
- Group data by production string or production string zone

Data Exchange - Added palynology data loader

78673

A new data exchange option has been added to load Palynology data

Attachments are now supported for well perforations

78140

The well perforations screen now allows attachments to be stored against records. This allows files, images, notes or a links to websites to be associated with a perforation.

Directional Survey / Survey points - Extra columns can now be added to the list

78139

When viewing directional survey points it is now possible to dog leg severity and vertical section columns to the list. You can change the columns being displayed using the icon on the top left hand side of lists.

Improved support for oil & gas shows information

77809

An improved oil & gas shows screen is now available for all clients using the PPDM wells module.

Improved user interface for managing well log data⁷⁷⁷¹⁵

The user interface used to manage well log data has been reworked to allow in improved flow for data entry and easier access to the required data. Changes including splitting the well log and log job information across two screens to remove the requirement to enter data in a certain order.

Seismic processed lines are now available for advanced search⁷⁸²⁴²

Seismic processed lines are now available for filter selection in advanced search.

Mapping - The set of default base layers has been updated⁷⁸⁰⁵⁵

The default base layers on the web map have been reviewed and updated. Changes include:

- Mundialis layers have been replaced with equivalent layers hosted by Terrestris
- New layers hosted by eAtlas have been made available
- New layers hosted by GEBCO have been made available

Please contact Petrosys support if there are other locally hosted or publicly accessible services you would like to make available on the map.

Records Management can now preview Outlook .msg files⁷⁸⁹²⁶

Outlook email messages can be saved to .msg files. Some clients save and catalog relevant emails alongside related unstructured data in dbMap/Web Records Management. It is now possible to preview the text from the .msg files directly within the browser without having to download and open in another application.

Added preferred indicator to well sample analysis grids⁷⁹⁵⁹⁴

A preferred indicator column has been added to each of the analysis type grids under "Wells / Samples". The preferred indicator is set against the analysis report and applies to all analysis linked to that report.

Added support for new Well Sample Analysis data types⁷⁴⁸³⁸

New screens have been provided to handle well sample analysis data:

- Conventional core analysis - Routine core analysis; Continuous core analysis
- Geochemistry - Rock evaluation; Vitrinite; Liquid chromatography; Lithology; Saturate; Elemental
- Coal core analysis - Adsorption isotherm; Desorption; Gas composition; Isotope; Petrology; Proximate; Rock mechanics; Ultimate; (Previously already available to some clients)

Data loaders have also been provided for Routine Core analysis and all of the analysis types grouped under "Coal core analysis"

All data type grids now include unit annotation in column labels⁷⁹²⁹⁶

All data type grids throughout the application have been updated to include a unit annotation in the column labels.

Data Exchange - Well header loader based on new framework⁷⁹³⁷²

A new data loader has been created for loading well headers. It is based on our new data loading framework and includes several advances over the previous loader including:

- Better reporting of errors
- Reporting of progress and ability to cancel loading run.
- Ability to supply diagnostics to aid investigating any issues.

Directional Surveys and Checkshots screens now support attachments⁷⁷⁸⁷⁶

The directional survey and checkshot survey screens now support storing attachments against the surveys. This allows files, images and web links to be associated with the surveys.

FracDB - Added completion status to the Frac panel⁷⁹⁸⁴⁴

Added "Completion status" to the "Wells / Well Treatment (Frac) / Treatment Stage / Frac" panel.

Mapping - Objects can now be selected using a hand drawn polygon

⁷⁷⁴⁴¹

dbMap/Web allows users to draw a polygon on the map to filter a list of objects such as wells, seismic lines or permit outlines. Previously mapping only supported drawing a rectangle to select the objects, but now a hand drawn polygon of any shape can also be drawn. You can toggle between Rectangle and 'Free form drawing' using the selection at the bottom of map when filtering a list by map extent.

Mapping functionality is now enabled when launching dbMap/Web screens from Petrosys PRO

⁷³⁰¹¹

Previously when dbMap/Web screens were launched from Petrosys PRO, mapping functionality within dbMap/Web was not enabled. The maps within dbMap/Web are now enabled when launched in this manner, including the location maps on some data screens.

New and updated report queries included in dbMap/Web 2021.1 release

⁷⁹⁶²⁷

Some new default queries and reports are included in the 2021.1 release including a Prospect level resources seriatim report and some Records Management reports.

Records Management can now preview zip files

⁷⁸⁹³⁵

The Records Management module within dbMap/Web can now preview catalogued Zip files by showing a listing of the files inside the archive without having to download the file from the server. This makes it possible for users to quickly check if files of interest are included in an archive without having to download.

Data loading framework - Multiple improvements supported for new data loaders

⁷⁹⁵²⁸

The new data loading framework in dbMap/Web has been enhanced to support several new features including:

- Support unit conversion
- Support for caching to reduce the number of queries being run
- Ability to reformatting dates if stored in a way not recognized by Excel
- Ability to disable CQ for a data load

New screens for capturing detailed remarks for well logs and log curves

⁷⁹⁸⁷³

New screens are now available to capture multiple remarks for well log and well log curve records.

dbMap/Web - General

Bug Fixes

Gas Composition - Sample ID can now be edited

⁷⁹¹⁴⁷

Fixed a bug preventing the Sample ID being changed on the Gas Composition screen.

Seismic coordinates screen - Screen will now load if you navigate from survey->line->coordinates and then Line->coordinates

⁷⁹³¹⁹

If you navigated from the Seismic/Seismic surveys list and then drilled down through the 2D lines for a survey, to the coordinates for a line the coordinate screen would work correctly. However, if you then navigated from Seismic/Seismic lines and then drilled down to coordinates the screen would not load. This has been fixed so that you can drilldown to the coordinates screen from both menus in the same dbMap/Web session.

Well Failure Analysis Data Loader - Can now load wells with a blank well status

78147

Previously the Well Failure Analysis data loader would flag data as having an error if the well status was blank. Now data that does not have a well status can be loaded successfully.

Wells Dashboard - Data population displays correct summary information

78894

Fixed a bug on the Wells dashboard that caused incorrect values to be displayed on the data population summary chart.

Special HTML characters are now displayed correctly when contained in data on the Core Analysis screens

79146

Previously data that contained some special characters would not display correctly on the screen. They were edited and saved correctly. The screens have been updated to correct display special characters.

Well log viewer: Added negative value warning when track scale set to logarithmic.

79222

A warning is now displayed when a track scale is set to logarithmic and it contains a log curve with non-positive values. The curve will not be displayed in this case.

Downhole diagram now displays shoe depths for casings

79082

The well downhole diagram now displays the shoe depths of casings rather than the base depth.

Well log viewer: Mnemonics containing the string MD incorrectly appeared as a depth curve.

79151

The well log viewer incorrectly assumed that log curves with a mnemonic containing 'MD' was a depth curve. The viewer has been changed to no longer include that check as part of determining depth curves.

Facilities - Can now edit records associated with lines and polygons

79335

Previously you would get an error if you tried to edit any attribute for a facility which was associated with a polygon or line and the Geographic CRS was not blank. This has been fixed and the Facilities dialog no longer shows the Geographic CRS, and latitude/longitude if the facility type is a polygon or line.

In addition to this, the latitude/longitude shown for Facilities that support points are now kept in sync when a geometry is imported.

Fixed incorrect TVD SS value displayed while adding a new formation top record.

78343

The top and base TVD SS values are now computed correctly when adding a new formation top record.

Formation and reservoir lookups are now sorted chronologically by default

78896

Formation and reservoir lookups are now sorted chronologically by default. This makes use of the ordinal age code being populated for the formation and reservoir reference data.

Mapping - Map now loads successfully if the user does not have any PLDB roles

79076

Fixed a bug causing an error on the map if the user had not been assigned any roles related to Prospects & Leads.

Records Management dashboard - Hover hint fixed for the counts showing the number of catalogued items 77394

When you hovered over the number of catalogued items at the top of the dashboard, you would see weirdly formatted text appear in the popup hover hint for the numbers. This has been fixed.

Improvements to core analysis screens - Multiple user interface issues fixed 79875

There have been multiple improvements for some user interface issues on the Core analysis screens. These include:

- Better support for mandatory values.
- NaN being displayed instead of a blank value in some cases
- Better support for hover hints when your mouse hovers over a field.
- Improved scrolling when opening screens.

[dbMap/Web - PLDB](#) [Enhancements](#)

Asset Type is now available as a filter on the PLDB Dashboard 78623

Asset Type is now available in the list of filters on the PLDB Dashboard.

PLDB - New compute method for Reserves to enter Sales gas 79300

The new compute method "Deterministic-Allowing direct entry of Sales Gas" has been added for use on the Prospect Target Reserves resource computation screen. As the name suggests, this method allows entering Sales gas values directly, instead of computing it from Raw gas and shrinkage.

[dbMap/Web - PLDB](#)

[Bug Fixes](#)

PLDB - Target dependencies screen now shows correct individual probability factors for targets with scenarios 79391

If a prospect target has scenarios with prospective resources defined, the Target dependencies panel now correctly shows the individual probability factor from the target resource computation. Previously it was showing the probability factor from the first scenario belonging to the target. This was just an issue with the value shown on the Target dependencies panel and did not affect the Prospect rollup computation.

PLDB Dashboard - "Prospect by basin" number of prospects is now consistent between the data table and chart 78387

On the PLDB dashboard the chart for displaying the number of prospects by basin was correct, but the data table listing the counts by basin was not correct. The data table has been fixed and now matches results shown in the chart.

Mapping - PLDB Target layer can be displayed on the map 78716

Fixed a bug that was preventing the Target layer from being added to the web map.

PLDB - Filtering prospects by "Region/Country" now correctly limits the results 79431

Fixed a bug causing an incorrect set of prospects to be returned when filtering using the "Region / Country" filter on the prospect header.