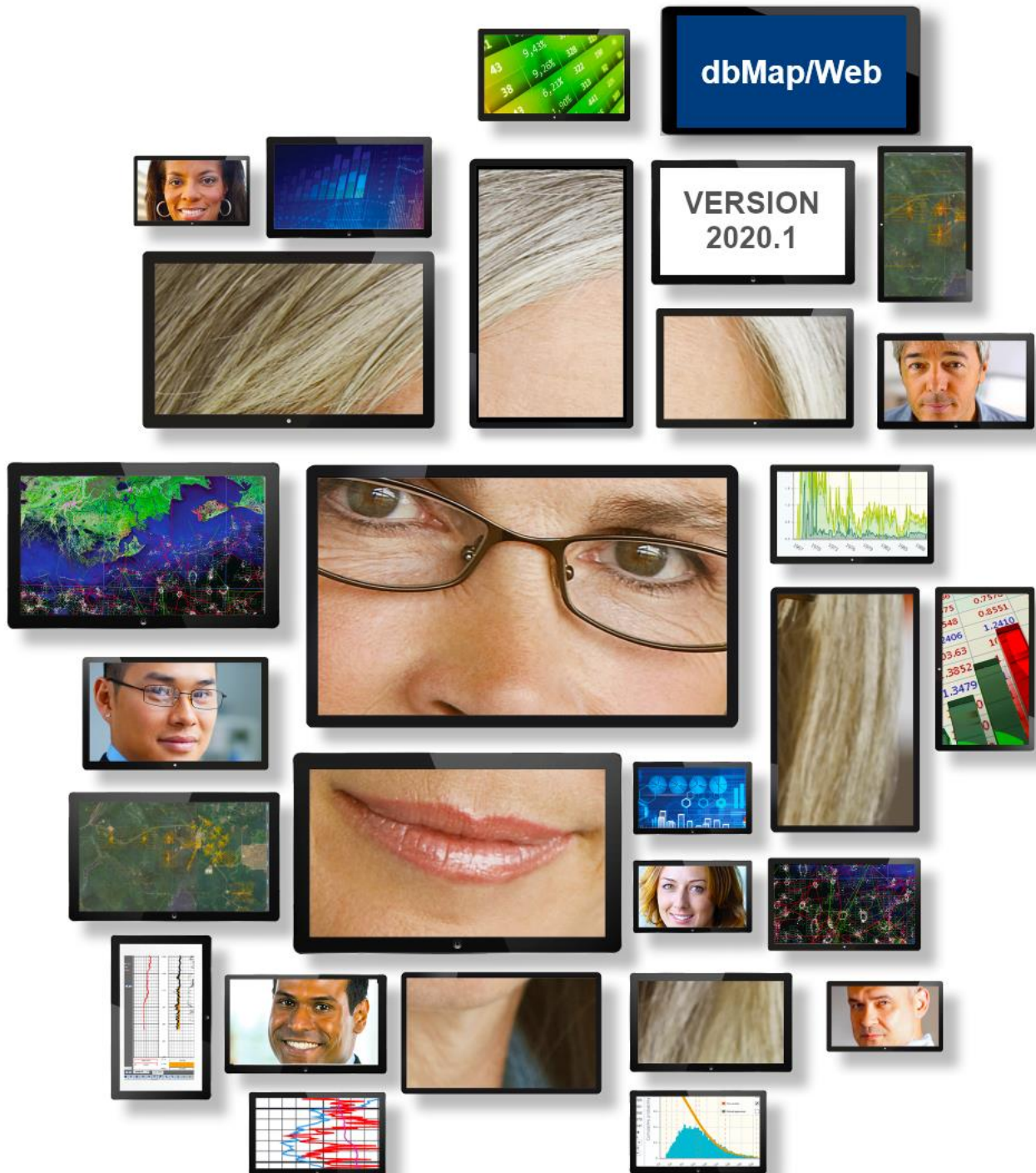


## SOFTWARE RELEASE NOTES

dbMap/Web Version 2020.1.4

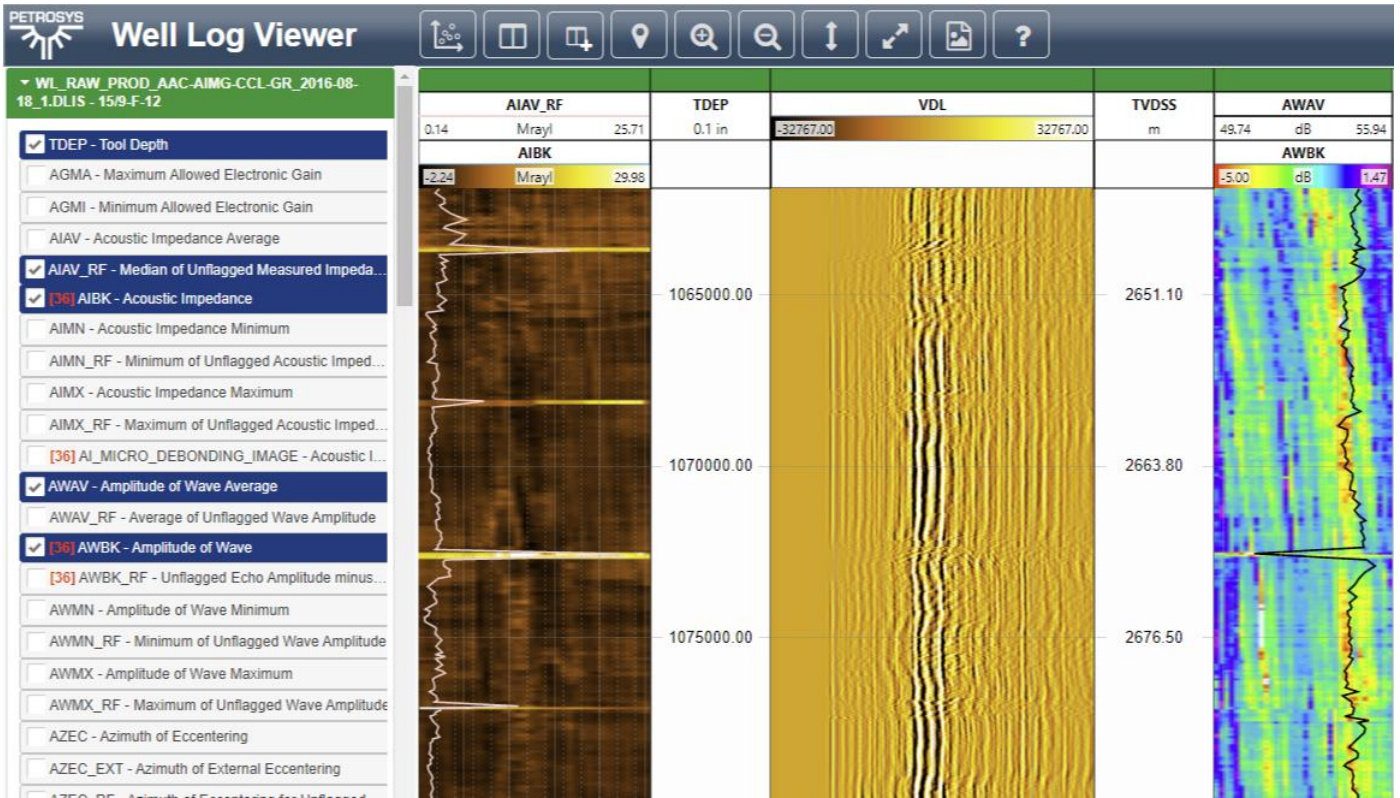


## Overview

dbMap/Web 2020.1 sees the introduction of displaying Multi-value (FMI) data in the well log viewer, new data loaders for Logicom E&P REP data, production data and well test data as well as previewing SEGY EBCDIC headers and TIFF image files.

## Well Log Viewer Multi-value (FMI) support

The well log viewer has been extended to display multi-value log curves such as FMI data. Users can select the gradient to use when rendering the Multi-value curves. They can also be viewed alongside or on the same track as traditional single value curves.



## PLDB – Import Logicom E&P REP Format

PLDB can now import data from REP exported Excel file format. This can be an easy way to help move your Prospect information into PLDB for managing multiple versions through time or migrating to PLDB.

If you would like to know more information about what data can be imported and if it can be extended to support your own data and workflows please contact Petrosys support.

### IMPORT - PLDB REP Prospect

PLDB REP Prospect importer

Input file:  REP Export Prospect A.xlsx

Trial run:

---

Generate detailed diagnostics file?

Prospect status:

Prospect category:

Asset type:

Target status:

Resource class:

Play:

Gas processing facility [Default: Generic]:

### New Data loaders – Production data and Well Tests

In addition to the PLDB REP data loader mentioned above, dbMap/Web 2020.1 also includes new data loaders for well monthly production data and well test data with a focus on MDT tests.

Well-->	UWI	WELL_NAME	Tests-->	TEST_TYPE	RUN_NUM	SOURCE	TEST_NUM	BASE_DEPTH	BASE_DEPTH_OUOM	COMPUTED_PERMEABILITY	FINAL_RESERVOIR_PRESSURE	FIN
		WELL A1		MDT	1	NZPAM	2	1000 m		0.2		4000

### IMPORT - Well Test

Well Test importer (v2020.1)

Input file:  No file chosen

Trial run:

---

Merge options

Default rule:  Keep all existing data

---

Test Type to use if none exists in input file:

Data Source to use if none exists in input file:

Basin to use if none exists in input file:

Generate detailed diagnostics file?

### IMPORT - Well Monthly Production

Well Monthly Production importer (v2020.1)

Input file:  No file chosen

Trial run:

---

Merge options

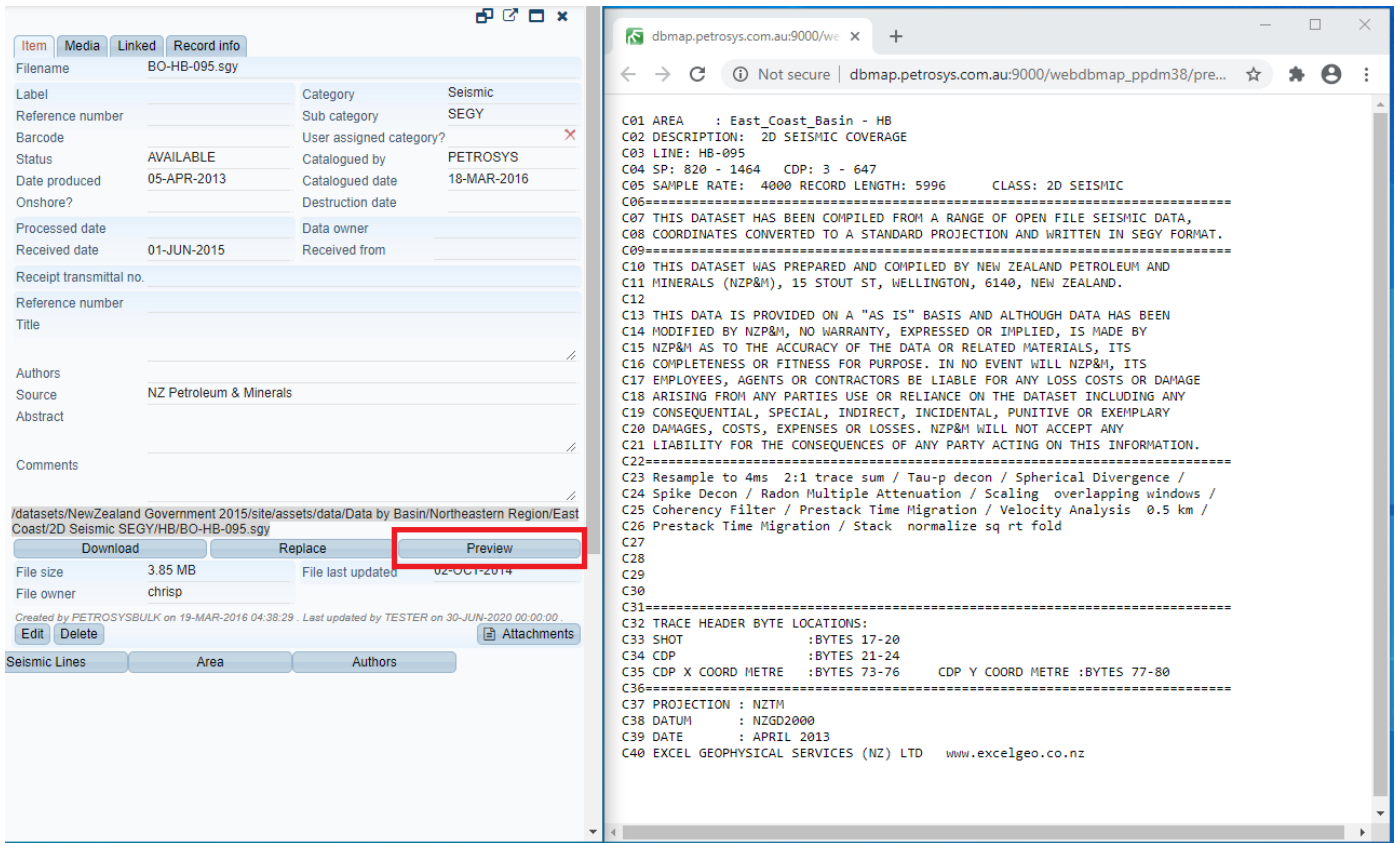
Default rule:  Keep all existing data

---

Generate detailed diagnostics file?

## Preview SEGY EBCDIC Header

When viewing SEGY files that have been catalogued in Records Management, users can now press the Preview button to view the EBCDIC header information which is read dynamically from the file. This is in addition to existing functionality which allows previewing of Word, Excel and other Office documents as well as some graphical formats.



## Preview TIFF Image Files

Web browsers are not able to natively display TIFF image files. When viewing TIFF files that have been catalogued in Records Management it is now possible for users to preview the files directly in the browser without having to first download the file or open in another application.

Refer to the installation notes for the 2020.1 release for more information on how to improve the performance of TIFF preview for your server.

Bulk Update Wizard

Item | Media | Linked | Record info

Filename: 1A Formation Evaluation (2 parts)\_PR1187L7.tif

Label	Category	Well
Reference number	Sub category	Log Prints
Barcode	User assigned category?	
Status	Catalogued by	PETROSYS
Date produced	Catalogued date	18-MAR-2016
Onshore?	Destruction date	
Processed date	Data owner	
Received date	Received from	

Receipt transmittal no.

Reference number

Title

Authors

Source: NZ Petroleum & Minerals

Abstract

Comments

Download | Replace | **Preview**

File size: 1.21 MB | File last updated: 17-FEB-2015

File owner: chrisp

Created by: PETROSYSBULK on 19-MAR-2016 04:38:30. Last updated by: TESTER on 30-JUN-2020 00:00:00.

Edit | Delete | Attachments

dbmap.petrosys.com.au:9000/webdbmap\_ppdm38/preview\_office\_file\_stream?xform=true&panel=RM\_PHYSICAL\_ITE

PR 1187 / 007 ENCLOSURE 7

**EXLOG**

COMPANY: PETROLEUM CORPORATION OF NEW ZEALAND (EX) LTD.  
 WELL: WAIHAPA No 1A - SIDETRACK  
 REGION: TARANAKI  
 FIELD: WILLOCAT  
 COORDINATES: LAT: 39° 23' 59.91" S, LONG: 174° 22' 19.24" E  
 API WELL INDEX NO.: 29TH MAY 1935  
 SPUD DATE: 29TH MAY 1935  
 ELEVATION: RKB-MSL 249M  
 TOTAL DEPTH: 4941.7M  
 CONTRACTOR: PARKER DRILLING (NZ) LTD  
 RIG / TYPE: 160 / LAND  
 LOG PREPARED BY: D. HUCKER, R. O'NEILL, T. JANOWICZ, D. MASTERB

**FORMATION EVALUATION LOG**

RATE OF PENETRATION (METREHR) | VISUAL POROSITY | CUTTINGS LITHOLOGY | CONTINUOUS TOTAL GAS | CUTTINGS GAS | METANE | BUTANE | CHROMATOGRAPHY | HYDROCARBON ANALYSIS | LITHOLOGY DESCRIPTION AND REMARKS

DEPTH IN METRES MEASURED

### Java 11

Java version naming has been through some changes in recent times. The official Long Term Support (LTS) versions of Java currently are Version 8 and Version 11. dbMap/Web continues to be supported running on Java 8 but is now also supported running on Java 11.

### Petrosys Professional Services

The Petrosys Professional Services team is highly experienced with PPDM and Oil Industry workflows. We are always happy to discuss options for prioritizing specific functionality with funding, for example:

- Managing additional data types
- Creating additional data loaders
- Tailoring dashboards.

Please contact Petrosys support if you would like to discuss.

## Detailed Release Notes Summary dbMap/Web 2020.1.4

### Enhancements

#### *dbMap/Web - Client*

[78774](#) Customization of well header (CCED Oman)

#### *dbMap/Web - General*

[78162](#) Well Header - Easting/northing values displayed to two decimal places

## Detailed Release Notes Summary dbMap/Web 2020.1.4

### Bug Fixes

#### *dbMap/Web - General*

[78050](#) Well coordinates can be removed when in DMS mode

#### *dbMap/Web - PLDB*

[78832](#) PLDB - Existing risk model sub-factors and comments are no longer deleted if the screen is not opened

# Petrosys Release dbMap/Web 2020.1.4

Detailed Release Notes

## [dbMap/Web - Client](#) [Enhancements](#)

### **Customization of well header (CCED Oman)** 78774

The well header has been modified as requested:

- Government ID, Well numeric ID, Plot name and Confidentiality type have been removed from the general tab
- Location name and Reservoir have been added to the general tab
- State, County and District have been removed from the locations tab
- TD Basin/Formation, Water depth, Water depth datum and Measured depth have been removed from the depths tab

## [dbMap/Web - General](#) [Enhancements](#)

### **Well Header - Easting/northing values displayed to two decimal places**

78162

The easting and northing values on the well header panel are now shown to two decimal places.

---

## [dbMap/Web - General](#) [Bug Fixes](#)

### **Well coordinates can be removed when in DMS mode** 78050

Fixed a bug preventing well coordinated being removed when the panel is in DMS mode.

---

## [dbMap/Web - PLDB](#) [Bug Fixes](#)

### **PLDB - Existing risk model sub-factors and comments are no longer deleted if the screen is not opened**

78832

Risk model sub-factors and knowledge details were inadvertently being deleted if you edited a prospect target resource computation and saved without viewing or changing any of the sub-factors or their details. It now correctly saves and retains the previous risk model details.



## Detailed Release Notes Summary dbMap/Web 2020.1.3

### Enhancements

#### *dbMap/Web - Client*

[78653](#) Added the Avocet status to the well list and well header screen (CCED)

#### *dbMap/Web - General*

[78563](#) Well Log Viewer now supports LAS v3.0

[78368](#) The attachments dialog has been made easier to use

## Detailed Release Notes Summary dbMap/Web 2020.1.3

### Bug Fixes

#### *dbMap/Web - Client*

[78643](#) Display the correct units on the LET screen (Santos)

## Petrosys Release dbMap/Web 2020.1.3

Detailed Release Notes

### [dbMap/Web - Client](#) [Enhancements](#)

#### **Added the Avocet status to the well list and well header screen (CCED)**

78653

The Avocet Status has been added to the well list and the well header panel for CCED.

---

### [dbMap/Web - Client](#)

### [Bug Fixes](#)

#### **Display the correct units on the LET screen (Santos)** <sup>78643</sup>

Fixed a bug on the LET screen causing an incorrect unit caption to be shown.

### [dbMap/Web - General](#) [Enhancements](#)

#### **Well Log Viewer now supports LAS v3.0**

78563

Catalogued LAS v3.0 files can now be viewed using the Petrosys Well Log Viewer.

#### **The attachments dialog has been made easier to use** <sup>78368</sup>

On the attachments dialog, you can now filter the list of attachments by the attachment types.

Also both the content and attachment types are only visible when adding/editing an attachment.

## Detailed Release Notes Summary dbMap/Web 2020.1.2

### Bug Fixes

#### *dbMap/Web - General*

- [77453](#) Updated the sql parser to correctly identify columns defined using a case statement
- [78264](#) Mundialis base map layers have been replaced with layers hosted by Terrestris

## Petrosys Release dbMap/Web 2020.1.2

Detailed Release Notes

---

### dbMap/Web - General

### Bug Fixes

#### **Updated the sql parser to correctly identify columns defined using a case statement**

77453

The sql parser has been updated to correctly identify columns when within case statements.

This has fixed an issue with using the in-line filters for some complex columns and saving the 'All depths are referenced from' on the Well header.

#### **Mundialis base map layers have been replaced with layers hosted by Terrestris**

78264

The Mundialis base map layers have been replaced by similar layers hosted by Terrestris.

## Detailed Release Notes Summary dbMap/Web 2020.1.1

### Enhancements

#### *dbMap/Web - Client*

- [78047](#) Updated URL for Santos Assets map base layer (Santos)
- [78023](#) Modified depth used for RFT Sand data (Santos)
- [77479](#) PLDB - Replicated all Contingent DOPs to the Well System (Santos)
- [77733](#) RM - Filter options updated (Greymouth)
- [77446](#) The Resource summary tab on the Prospect header displays numbers to 1 decimal place (Cairn)

#### *dbMap/Web - General*

- [78043](#) Added Easting and Northing values to the well header
- [77527](#) Added reference screen for Directional Survey Class

# Detailed Release Notes Summary dbMap/Web 2020.1.1

## Bug Fixes

### *dbMap/Web - Client*

[77961](#) Core Samples can now be moved between isotherm sample groups (Origin)

### *dbMap/Web - General*

[77870](#) Records Management now supports preview of multi-page TIFF files

[77552](#) Directional Survey start and end dates have been swapped and renamed on the panel

[77476](#) The Save as option is now working for all panels

[77886](#) Wells / Well Logs grid can now be filtered by file name

### *dbMap/Web - PLDB*

[77927](#) PLDB - Basin analysis - FSD fitted distribution is now generated using values on Y-axis

[78037](#) PLDB - Play Rollup now only shows prospective results for targets

[77621](#) PLDB - Rollup - Apply group share option fixed

[77650](#) PLDB - Prospect summary report now converts to the currently selected units

[77995](#) PLDB - Copying a target resource computation with risk model sub-factors fixed

# Petrosys Release dbMap/Web 2020.1.1

Detailed Release Notes

## [dbMap/Web - Client](#) [Enhancements](#)

### **Updated URL for Santos Assets map base layer (Santos)** 78047

Updated the URL for the "Santos Assets" map base layer.

### **Modified depth used for RFT Sand data (Santos)** 78023

RFT data is now using the depth interval to generate intersecting Sands (Santos).

### **PLDB - Replicated all Contingent DOPs to the Well System (Santos)** 77479

Contingent Drilling Opportunities are now being replicated to the Well System (Santos).

### **RM - Filter options updated (Greymouth)** 77733

Records Management filters have been modified as requested by Greymouth.

### **The Resource summary tab on the Prospect header displays numbers to 1 decimal place (Cairn)** 77446

The grid of data on the prospects Prospective resource summary tab has been formatted to display to 1 decimal place.

---

## [dbMap/Web - Client](#)

## [Bug Fixes](#)

### **Core Samples can now be moved between isotherm sample groups (Origin)** 77961

When attempting to move some core sample records into a different isotherm group, an error with existing keys would prevent saving the changes. This has been fixed.

## [dbMap/Web - General](#) [Enhancements](#)

### **Added Easting and Northing values to the well header** 78043

Easting and Northing values have been added to the well header. These values are calculated base on an automatically selected projected CRS.

### **Added reference screen for Directional Survey Class** 77527

A screen has been created for Directional Survey Class reference data.



**Records Management now supports preview of multi-page TIFF files**

77870

Previously Records Management has supported previewing of single page TIFF files. The first page of multi-page TIFF files can now also be previewed.

**Directional Survey start and end dates have been swapped and renamed on the panel**

77552

The Seismic survey / general tab shows the survey start and end dates. These have been swapped so the start date is on the left.

They have also been renamed to make it clear which is the start and the end date.

**The Save as option is now working for all panels**

77476

Some panels, like the Wells / Well aliases and Wells / Directional surveys, were not allowing a copy to be saved. This has been fixed.

**Wells / Well Logs grid can now be filtered by file name**

77886

The Wells / Well logs grid was not allowing the inline filters to work for the File name column. This has been fixed.

**PLDB - Basin analysis - FSD fitted distribution is now generated using values on Y-axis**

77927

Generating benchmark fitted distributions on the Basin analysis/FSD and Resource computation plot distribution screens now correctly uses the input values on the Y-axis instead of X-axis.

**PLDB - Play Rollup now only shows prospective results for targets**

78037

The Prospects & Leads Rollup for a single Play now shows only prospective resource results for targets. Previously it also showed any discovered, contingent or reserves results for targets. This was only a display issue on the Oil, Gas and Liquids tabs. The Rollup summary results were, and still are, being computed using prospective resources only.

**PLDB - Rollup - Apply group share option fixed**

77621

The Prospects & Leads Rollup Apply group share option is now working correctly to produce results with each Prospect's group share applied. Previously it made no difference to the results.

**PLDB - Prospect summary report now converts to the currently selected units**

77650

Displaying the Prospect summary report, from the button on the Prospect header panel, now uses the currently selected units (imperial or metric) on the panel.

Additionally the header sections of both Prospect and Target summary reports were not being converted while the rest of the report was. This has been fixed.

**PLDB - Copying a target resource computation with risk model sub-factors fixed**

77995

Copying a prospect or target that had resource computation data with risk model sub-factor values defined now works as expected. Previously it would give a constraint violation error.

# Detailed Release Notes Summary dbMap/Web 2020.1

## Enhancements

### *dbMap/Web - Client*

- [76973](#) PLDB - Unique constraint on play relaxed (Cairn)
- [76935](#) Joint Venture and Interest set changes (Santos)
- [77405](#) The PLDB dashboard tree filter has the same Category column as the Prospect tree filter (Cairn)

### *dbMap/Web - General*

- [69794](#) SEG Y EBCDIC headers can now be viewed in Records Management
- [76297](#) Tabbing into and out of lookup values on the screen no longer automatically opens the lookup dialog
- [73502](#) Well log viewer can now display of DLIS multi-trace logs
- [75691](#) Tiff files can now be previewed in Records management
- [76698](#) Water production has been added to multi-well production chart
- [76770](#) Data loaders now report the number of rows loaded successfully or with errors while in progress
- [75013](#) dbMap/Web is supported on Java 8 and Java 11
- [76980](#) Well log viewer can now reverse the gradient used to fill log curve displays
- [76571](#) Well Monthly Production data loader available in dbMap/Web
- [75723](#) Well Test data loader available in dbMap/Web
- [77160](#) Well Test list now displays the test subtype

### *dbMap/Web - PLDB*

- [76913](#) Portfolio snapshots can now be deleted
- [77079](#) REP Excel export format data loader now available for PLDB

# Detailed Release Notes Summary dbMap/Web 2020.1

## Bug Fixes

### *dbMap/Web - Client*

- [76987](#) PLDB Resource computation Tornado plot now works (Santos Data Hub)
- [77094](#) The Web GIS link has been updated to the new server and coordinates included (Santos)
- [76812](#) The perforation diagram is now shown as soon as the new chart window is opened (Santos)
- [76763](#) Resource computation is now shown on Prospect Summary report (Beach)

### *dbMap/Web - General*

- [77401](#) Improved performance of the Seismic Lines / Coordinates screen
- [77231](#) Custom reports no longer include a red-bordered rectangle when printed from the Chrome browser to PDF
- [77259](#) Mapping - Correct well production totals are shown on the map
- [77397](#) Imported polygons for Basins, Fields and Permits now show on the map
- [75095](#) The Save as.. button now works consistently for all panels

### *dbMap/Web - PLDB*

- [77338](#) A positive value can now be entered as the Total depth (TVD SS) for a Drilling opportunity
- [76859](#) Editing the age sequence number of a play interval no longer copies the play interval
- [74786](#) PLDB Multi-scenario - Initial single target computation now matches prospect roll-up
- [75871](#) PLDB Resource computation - Changed validation of low and high values
- [76692](#) Remarks are now editable on the Rules reference screen
- [76514](#) Target dependency groups can now be created
- [72830](#) The joint venture security screens now show joint ventures even if they are not assigned a country
- [76867](#) Unit conversion button is always shown when there are units to be converted

# Petrosys Release dbMap/Web 2020.1

Detailed Release Notes

## [dbMap/Web - Client](#) [Enhancements](#)

### **PLDB - Unique constraint on play relaxed (Cairn)** 76973

The database unique constraint for Plays has been relaxed to allow the creation of plays with the same play interval, trap reservoir and closure type, but different play names.

### **Joint Venture and Interest set changes (Santos)** 76935

Changes have been made to the dbMap Well header and PLDB prospect screens to support the new database structure for storing Joint Venture and Interest set details. This includes making use of the active flag to filter JVs and Interest sets, instead of the expiry date. The JV and Interest Set reference table screens have also been updated to show the active flag.

### **The PLDB dashboard tree filter has the same Category column as the Prospect tree filter (Cairn)** 77405

The PLDB dashboard tree filter is now using the same column for Category as the Prospect tree filter for Cairn.

---

## [dbMap/Web - Client](#)

## [Bug Fixes](#)

### **PLDB Resource computation Tornado plot now works (Santos Data Hub)**

76987

The PLDB Resource computation Tornado plot now works for the Data Hub database version of dbMap/Web. Previously nothing displayed in the plot area. This was due to some missing database unit reference data. In addition to fixing the missing data, the Tornado plot has been updated to better handle the case when reference data is not found.

### **The Web GIS link has been updated to the new server and coordinates included (Santos)**

77094

The server the Web GIS link points to has been updated and will now locate the well using its coordinates.

### **The perforation diagram is now shown as soon as the new chart window is opened (Santos)**

76812

A bug preventing the perforation diagram from being drawn as soon as the window opens has been fixed.

### **Resource computation is now shown on Prospect Summary report (Beach)**

76763

The Prospect summary report now shows the Resource computation data.

## [dbMap/Web - General](#) [Enhancements](#)

### **SEG Y EBCDIC headers can now be viewed in Records Management** 69794

When a SEG Y file is catalogued in Records Management you can now 'Preview' the EBCDIC header information for the file. The EBCDIC header is read dynamically so always shows the latest information.

## **Tabbing into and out of lookup values on the screen no longer automatically opens the lookup dialog** 76297

The tab key can be used to move between different input values on the screen. Previously if you 'tabbed' into a lookup input value it would automatically trigger the lookup selector dialog to open. Tabbing from one input to the next has also been improved to make data entry/navigation via keyboard more consistent.

## **Well log viewer can now display of DLIS multi-trace logs** 73502

Multi-trace well logs from DLIS can now be displayed as raster images in the Well Log Viewer.

See the highlights section of the release notes for an example of the raster display and overlaying with other log curves.

## **Tiff files can now be previewed in Records management** 75691

The ability to preview a TIFF image has been added to Records management.

For information on how to improve the performance of TIFF preview for your server refer to the installation notes for dbMap/Web 2020.1.

## **Water production has been added to multi-well production chart** 76698

Water production has been added as a new series on the multi-well production chart.

## **Data loaders now report the number of rows loaded successfully or with errors while in progress** 76770

New data loaders such as the Well Test, Well Production and Coal Core Analysis now include in their processing note a count of how many rows have been succeeded or failed in being loaded as they are processed.

## **dbMap/Web is supported on Java 8 and Java 11** 75013

dbMap/Web continues to be supported on Java 8 and is now also supported on Java 11. There are no current plans to deprecate Java 8 for dbMap/Web.

Java has moved to releasing new versions every 6 months, but only particular versions are intended to be supported longer term and are nominated as Long Term Supported (LTS) versions.

The current LTS versions of Java are version 8 and version 11. The same download for dbMap/Web can be used with Java version 8 or version 11.

## **Well log viewer can now reverse the gradient used to fill log curve displays** 76980

Gradient fills in the Well Log Viewer can now be reversed. In the curve fill style properties, an option to reverse the gradient has been added.

## **Well Monthly Production data loader available in dbMap/Web** 76571

A new data loader is now available for loading monthly well production data for PPDM based clients.

## **Well Test data loader available in dbMap/Web** 75723

A new data loader is now available for loading well test data for PPDM based clients. It is focused on MDT test data but can load some attributes shared by other test types.

## **Well Test list now displays the test subtype** 77160

In the list of tests for a well you can now see the test subtype as an additional column. Users can now easily see extra details such as whether a drill stem test is a casing packer or a hook wall packer.

**Improved performance of the Seismic Lines / Coordinates screen** 77401

The performance of the Seismic Lines / Coordinates screen is now much improved for databases with very large numbers of coordinates.

**Custom reports no longer include a red-bordered rectangle when printed from the Chrome browser to PDF** 77231

A red-boarded rectangle previously appeared on PDFs generated from Custom reports in the Chrome web browser. The rectangle has been removed.

**Mapping - Correct well production totals are shown on the map** 77259

Fixed a bug causing incorrect production totals being shown on the map

**Imported polygons for Basins, Fields and Permits now show on the map** 77397

A bug preventing polygons imported through dbMap/Web being shown on the map for Basins, Fields and Permits has been fixed.

**The Save as.. button now works consistently for all panels** 75095

The Well test (Origin), Paly/Paleo, Pressure and RFT pretest (Santos) screens were not behaving consistently with other data screens for 'Save as'. This has been fixed so the 'Save as' button now works consistently for all screens.

---

[dbMap/Web - PLDB](#) [Enhancements](#)

**Portfolio snapshots can now be deleted** 76913

The portfolio manager dialog now shows a delete button next to each snapshot so they can be individually deleted.

When there are no snapshots for a portfolio, a button is presented to delete the current version.

When the current version is deleted then the portfolio is automatically deleted as it has no data.

**REP Excel export format data loader now available for PLDB** 77079

PLDB can now import data from REP exported Excel file format. This can be an easy way to help move your Prospect information into PLDB for managing multiple versions through time or migrating to PLDB.

If you would like to know more information about what data can be imported and if it can be extended to support your own data and workflows please contact Petrosys support.

**A positive value can now be entered as the Total depth (TVD SS) for a Drilling opportunity** 77338

Previously a Drilling opportunity's Total depths (TVD SS) could only be a negative number. This has been changed so either positive or negative numbers can be entered.

## **Editing the age sequence number of a play interval no longer copies the play interval**

76859

When editing a Play interval via the reference screens, if the age sequence number was modified then a new record was created instead of updating the existing record. This has been fixed.

## **PLDB Multi-scenario - Initial single target computation now matches prospect roll-up**

74786

When the resource computation is created for a prospect with a single target using the Multi-scenario compute method, the prospect resource roll-up results now match the target results. Previously some slight differences could occur, but after the target resource computation was modified the results would match the Prospect roll-up.

## **PLDB Resource computation - Changed validation of low and high values**

75871

It is valid to have a low value (eg P90) that is higher than the high value (eg P10). Previously this was not allowed and raised a validation error preventing the values from being saved.

## **Remarks are now editable on the Rules reference screen**

76692

Previously the remarks were not shown or editable on the Admin / Reference tables / PPDM / General reference / Rule reference screen. They are now visible and editable as they are used to show which target/prospect is included in rollups on the Prospect header / Resource summary tab.

## **Target dependency groups can now be created**

76514

A change in configuration prevented new Prospect target dependency groups from being added. This has been fixed.

## **The joint venture security screens now show joint ventures even if they are not assigned a country**

72830

A limit preventing joint ventures from being shown on the Admin / Security / Joint venture screens has been removed so now all joint ventures are listed even if they do not have a country assigned.

## **Unit conversion button is always shown when there are units to be converted**

76867

Sometimes the unit conversion button that toggles between metric and imperial was not always shown on the resource calculation panels. This has been fixed.