

dbMap[®]

Master Data
Management Strategy

 **PETROSYS** |  **INTERICA**

www.petrosys.com.au

A Petrosys **dbMap** data management strategy will help you build a reliable and secure collection of your E&P data, whether it's information that you have measured, interpreted or acquired. Our extensive experience with the PPDM data model will ensure the security and performance of your data store can be tailored to meet operational needs.

Manage, Track & Govern Large Data Sets

Managing multiple versions of data and selectively promote elements to the master depending on data type and business context. In dbMap, data changes can be traced using audit history tables.

Manage Unstructured Data

Records Management (RM) in the dbMap® PPDM model supports cataloguing of unstructured digital and physical data such as well logs, seismic data sets, core samples and images. Links to the E&P master data and existing file storage systems open effective knowledge streams between specialised data stores.

Desktop and Web Interfaces / Cloud or On-Premis

On the cloud or on-premis both the desktop map interface and high performant dbMap/Web interface, allow you to browse, query, report and edit your master data store.

Integrate Business Processes

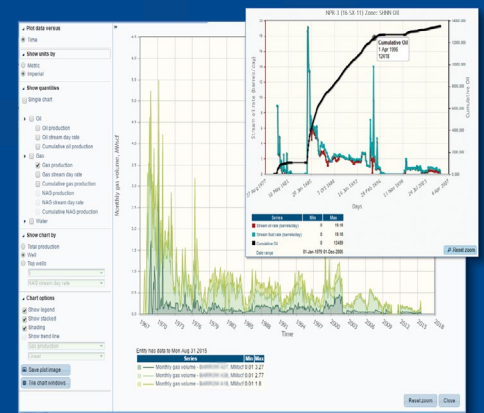
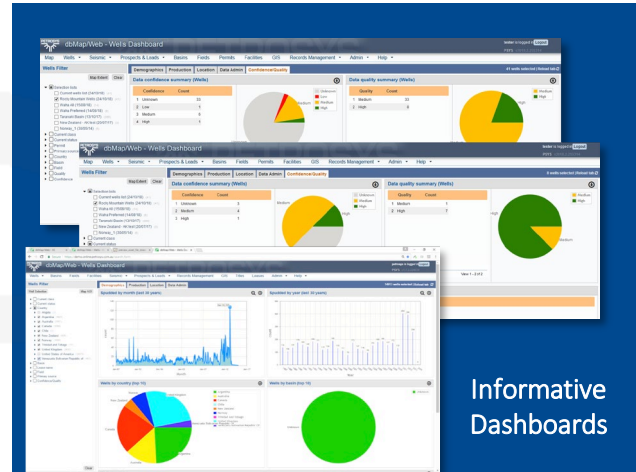
Having confident access to reliable and unique reference data for wells, surveys and leases allows you to integrate business processes across financial, engineering and geotechnical domains.

Effective Technical Data Assembly

Inconsistencies of data acquired over decades can lead to poor interpretations and missed targets. The improved knowledge of data availability provided by the dbMap/Web user interfaces means the best data is used with confidence.

PPDM Wells, Seismic & RM

Petrosys supports a substantial footprint of the PPDM data model for well and seismic data. The well data coverage includes well header, directional surveys, well logs, tops, cores and monthly production. Seismic coverage includes 2D and 3D spatial data, acquisition and processing histories.



View, Understand and Drill Down



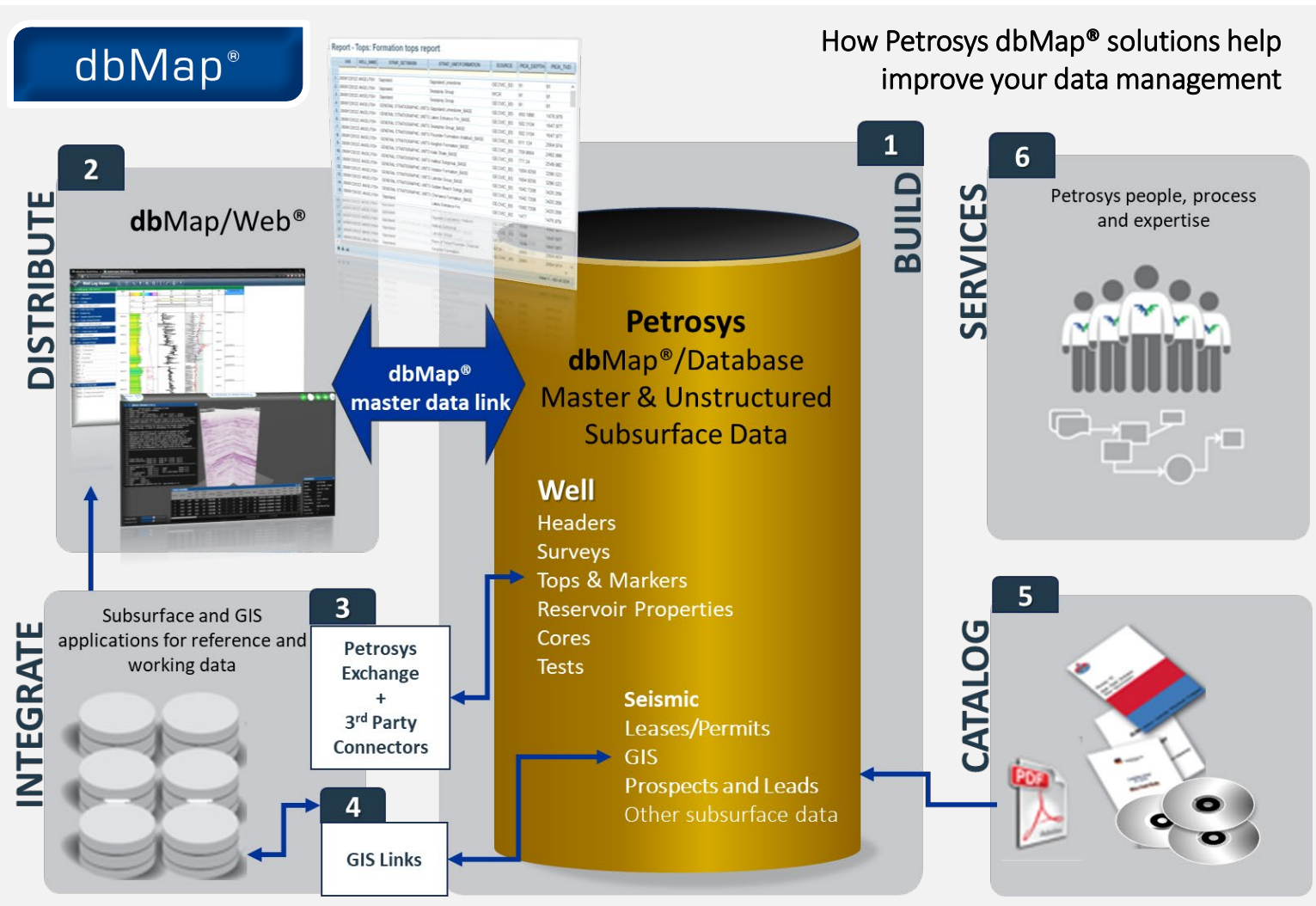
Access Unstructured Digital & Physical Records

Gold Compliant



Petrosys are E&P Data Management Specialists

Good data management is at the core of any company, but that doesn't mean the job is easy. Work with Petrosys experts to build a competent and effective data management team and implement solutions that will ensure that your knowledge assets contribute increasing value to corporate performance.



- 1** Tailor a master data store around the PPDM data model. Optimise database performance and integrity to meet your specific business needs.
- 2** Access Petrosys and other data stores through Windows and Linux dbMap® desktops and provide fast access to a wide audience with the dbMap® Web browser based interface.
- 3** Exchange subsurface and spatial data with third party data stores using Petrosys exchange tools or custom-built database functions.
- 4** Reinforce your GIS capability with automated publishing of master data to ArcSDE layers, display of GIS layers in the dbMap® desktop, and EPSG coordinate reference systems support.
- 5** Manage your company's digital and physical records with the ability to store the data near line. Discover and browse online reports, documents and images directly via dbMap® interfaces.
- 6** Work with Petrosys experts to build an effective data management team that will ensure that your knowledge assets contribute to increasing value to corporation performance.

dbMap[®]

Master Data
Management Strategy

CONTACT US!

info@petrosys.com.au

www.petrosys.com.au

FOLLOW US!

LinkedIn  YouTube

 PETROSYS

 INTERICA