

Data Management

The effectiveness of the processes with which you manage your E&P assets will depend on the quality of the data that describes them. A Petrosys dbMap data management strategy will help you build a reliable and secure collection of your E&P data, whether it's information that you have measured, interpreted or acquired. Our extensive experience with the PPDM data model will ensure that the security and performance of your data store can be tailored to meet your operational needs.

Gold Standard Data

With multiple teams and different operational processes using data from the same business object over the history of an asset, it is essential that the business uses a consistent version of the data with a validated level of quality and a traceable change history. The aim of a well-managed master data strategy is to create a gold standard source for the key components of business knowledge.

Petrosys are E&P Data
Management Specialists

Manage Sources, Track Changes and Govern Large Data Sets

E&P data is frequently available from multiple sources, ranging from public records through commercially traded data to the operator's own information. Petrosys provides strategies for managing multiple versions of data and for selectively promoting elements to the master depending on data type and business context. In Petrosys dbMap, data changes can be traced using audit history tables. Auditing can be selectively disabled for technical updates to allow the cost in resources and performance to be balanced against business value.

Integrate Business Processes

Having confident access to reliable and unique reference data for wells, surveys and leases allows your organisation to integrate business processes across financial, engineering and geotechnical domains. Production records can be correctly assigned to well bores, which in turn are correctly positioned relative to geotechnical interpretation, reservoir models, and lease boundaries.

When it comes to exploration and production data, Petrosys' global experience is recognized and trusted.



Desktop and Web Interfaces

Petrosys provides both a desktop map interface (accessible through Windows or Linux) and the dbMap Web interface that features industry-leading interactive performance in an easily deployed web browser environment. Both interfaces allow you to browse, query, report and edit your master data store. The dbMap solution can also be cloud hosted or implement on-premise.

Effective Technical Data Assembly

In putting together data acquired over decades of field development, drilling and seismic surveys, the resolution of inconsistencies, errors and data gaps can not only be a time consuming distraction but can also lead to poor interpretations and missed targets. The improved knowledge of data availability provided by the dbMap and dbMap Web user interfaces means the best data is used with confidence.

Delve into Original Data Sources

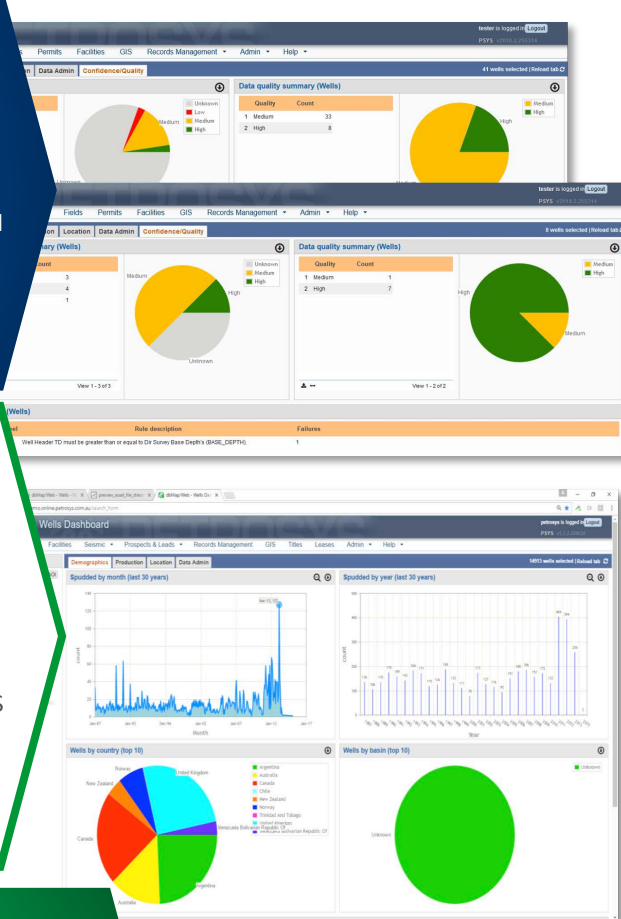
When users suspect a problem with data from a well or survey, managed access to unstructured datasets allows them to drill down into the original source data to more rapidly and reliably resolve inconsistencies or add critical missing knowledge. Errors in simple numbers such as the elevation reference for a well, for example, can completely negate the value of the well in a data set. Being able to check a suspicious elevation against an original well completion report may be the key to reliable inclusion of additional formation picks or checkshot surveys in a sparsely drilled region..

Manage Unstructured Data

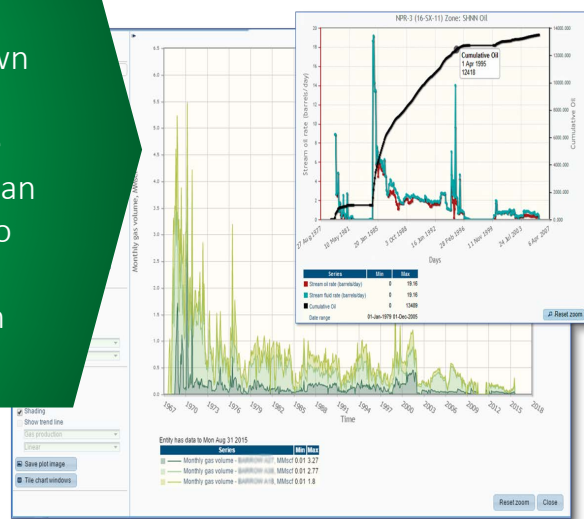
Records Management (RM) in the dbMap® PPDM model supports cataloguing of unstructured digital and physical data such as well logs, seismic data sets, core samples and images, and document collections. Links to both the E&P master data and any existing document or file storage systems open effective knowledge streams between specialised data stores.

PPDM Wells, Seismic & RM

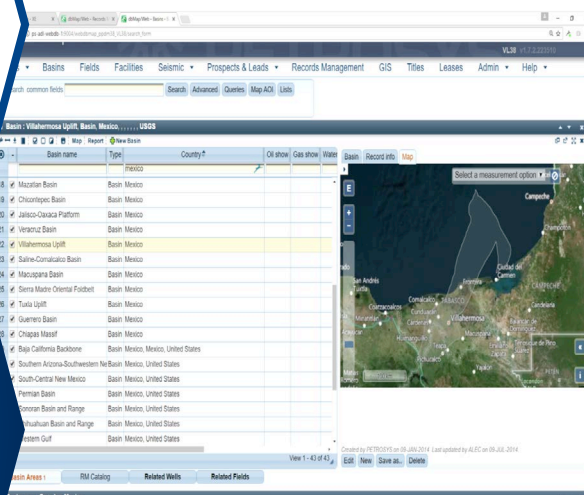
Petrosys supports a substantial footprint of the PPDM data model for well and seismic data. The well data coverage includes well header, directional surveys, well logs, tops, cores and monthly production. Seismic coverage includes 2D and 3D spatial data, acquisition and processing histories.



Informative Dashboards.



View, Understand and Drill Down.

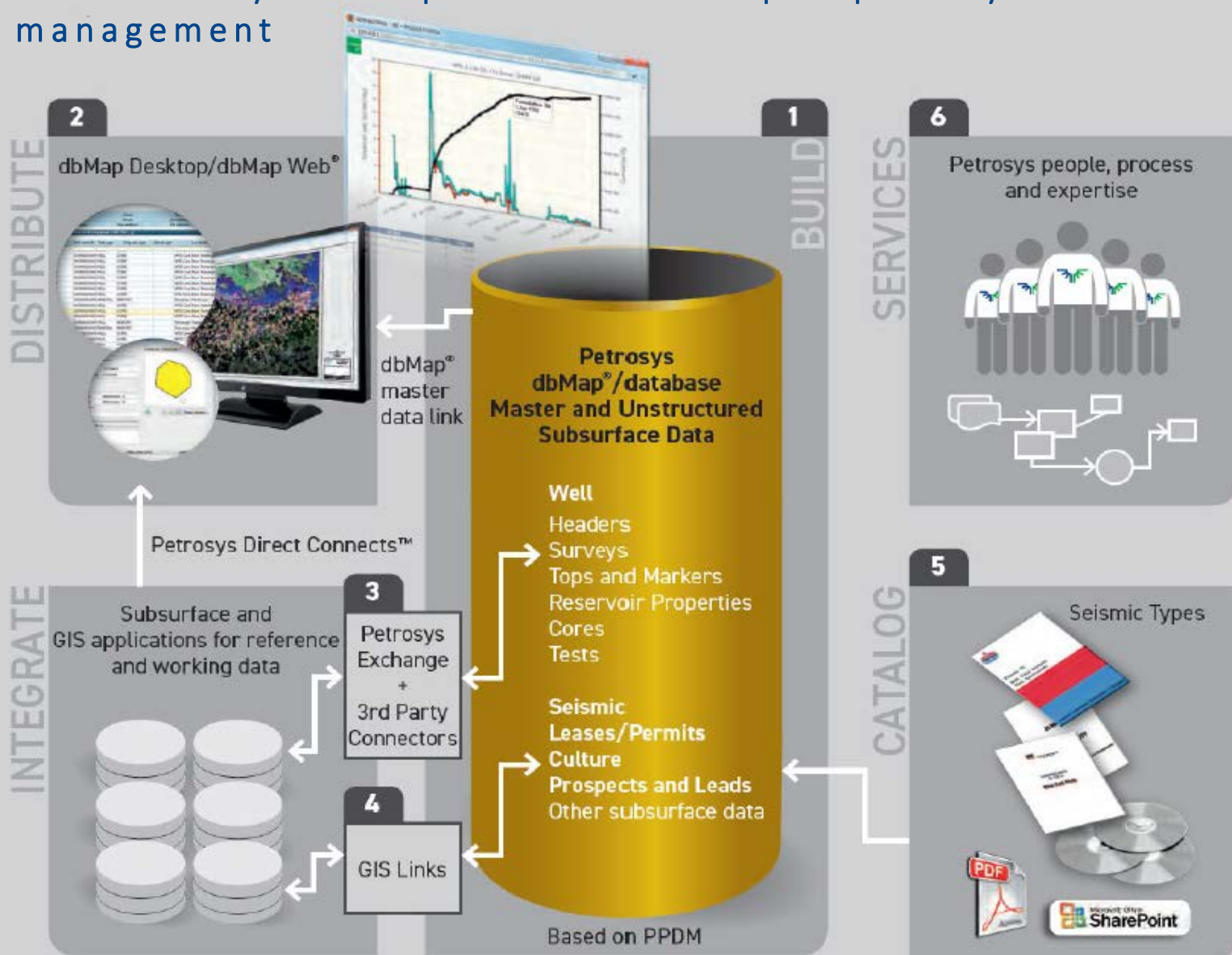


Access and Update Detailed Data.

Petrosys are E&P Data Management Specialists

Good data management is at the core of any company, but that doesn't mean the job is easy. Work with Petrosys experts to build a competent and effective data management team and implement solutions that will ensure that your knowledge assets contribute increasing value to corporate performance.

How Petrosys dbMap® solutions help improve your data management



- 1** Tailor a master data store around the PPDM data model. Optimise database performance and integrity to meet your specific business needs.
- 2** Access Petrosys and other data stores through Windows and Linux dbMap® desktops and provide fast access to a wide audience with the dbMap® Web browser based interface.
- 3** Exchange subsurface and spatial data with third party data stores using Petrosys exchange tools or custom built database functions.
- 4** Reinforce your GIS capability with automated publishing of master data to ArcSDE layers, display of GIS layers in the dbMap® desktop, and EPSG coordinate reference systems support.
- 5** Manage your company's digital and physical records with the ability to store the data near line. Discover and browse online reports, documents and images directly via dbMap® interfaces.
- 6** Work with Petrosys experts to build an effective data management team that will ensure that your knowledge assets contribute to increasing value to corporation performance.

Achieve Good Corporate Governance

Managing access to, and the ownership of, data is both a corporate responsibility and a competitive differentiator. Petrosys dbMap lets you control database level security to ensure that only authorised users can update information. Data governance procedures can be implemented to give control of data to the most appropriate staff.

Develop Comprehensive Spatial Integrity

dbMap builds on the EPSG coordinate reference system (CRS) database to reconcile historically and regionally diverse geographic information. Extensively tested and mature algorithms ensure the optimal interpolation of downhole data from well directional surveys.

Better Outcomes

Enabling professional staff to efficiently overcome data hurdles enables geoscientists to complete projects faster and to a higher standard. As a result, your business can achieve exploration and production targets at lower costs and in a shorter time frame.



Access Unstructured Digital and Physical Records

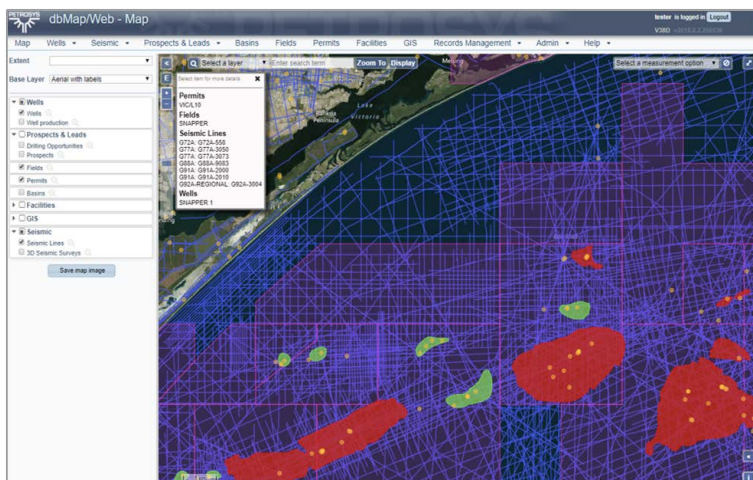
Leverage GIS Investments

Petrosys supports a range of spatial data management technologies including Oracle Spatial and Esri ArcSDE. Well locations and seismic navigation from the PPDM master can be automatically made available to your ArcGIS community, whilst GIS managed spatial knowledge related to facilities, infrastructure and regional geology is also accessible to the dbMap user. dbMap's powerful spatial data translator turns your Petrosys desktop into an essential hub for moving spatial data in and out of geoscience applications. Several options are provided to allow for the management of leases in different business environments.

Agile and Relevant Extensions

Our professional development and QA group ensures that dbMap is regularly extended to keep up with evolving industry needs.

dbMap Web Map



Data Management

dbMap®

CONTACT US:

Email: info@petrosys.com.au

Visit: www.petrosys.com.au