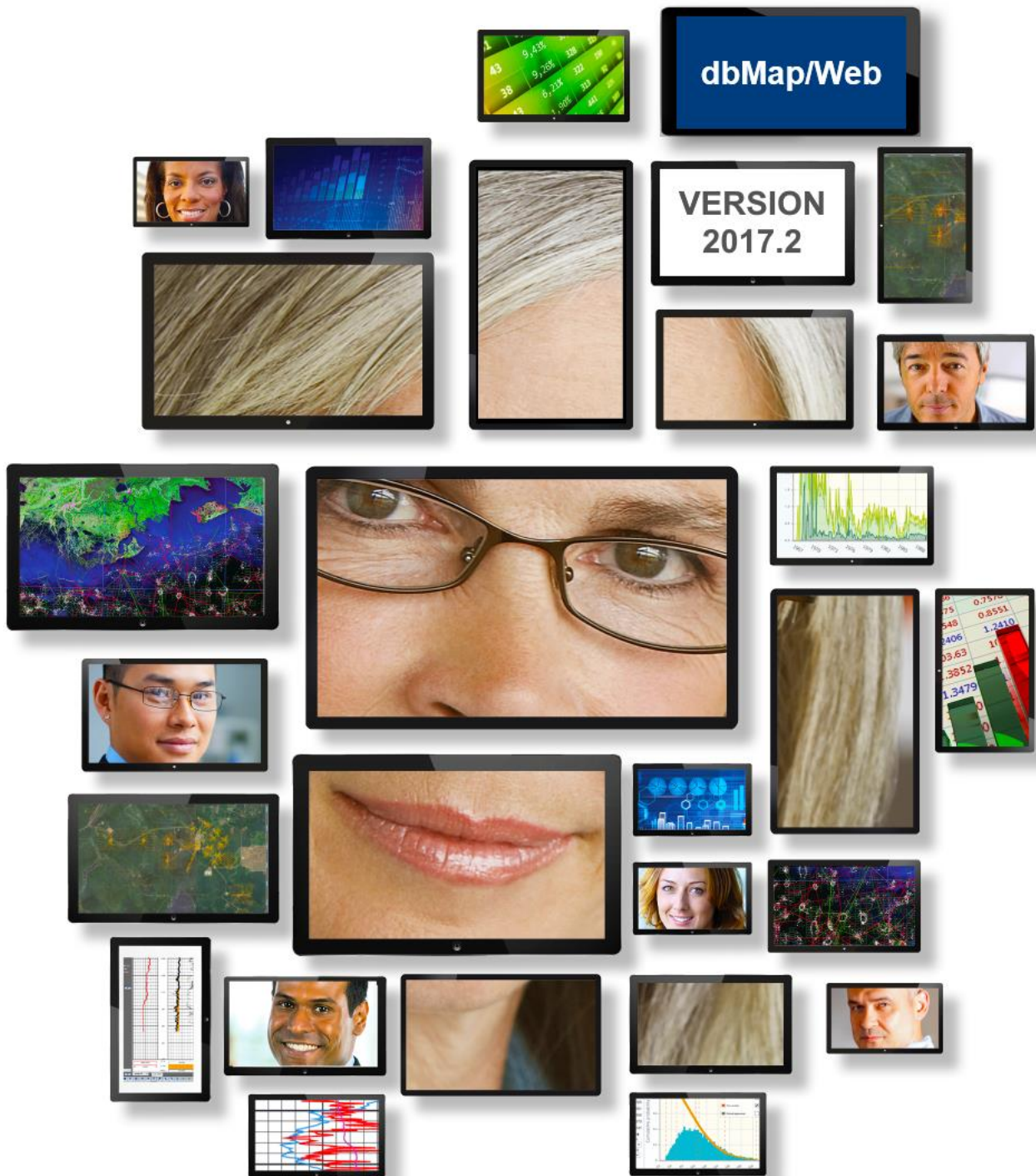


**SOFTWARE RELEASE NOTES**  
dbMap/Web Version 2017.2.1



dbMap/Web 2017.2 introduces a range of extensions to the PPDM 3.8 Wells and Records Management modules.

New Wells module data types:

- Paly/Paleo
- Completions
- Sand Summaries
- Sample Analysis
- Relationships
- Well Status

New Records Management features:

- Copies
- Keywords
- Ancillary Data
- Links to additional data types (Basins, Fields and Permits)

## PPDM 3.8 Wells Module Extensions

The PPDM 3.8 well module has been extended to support a wider selection of PPDM Well data types.

### Paly/Paleo

Screens have been added to capture palynological and paleontological data related to the well, including summary, lithology sample, fossil and interpretation information.

#### Summary

<b>General</b>		<b>Record info</b>	
Report title	Well paleo report		
Report date	29-SEP-2017	Analysis end date	22-SEP-2017
Analysis start date	08-SEP-2017	Reference num	1
Source	Petrosys Pty Ltd - Australia	Summary type	
Analyst	Petrosys Pty Ltd		
Diversity count	3	Preservation quality	Good
Remark			

#### Lithology Samples

<b>General</b>		<b>Record info</b>	
Top md	2346.00 m	Base md	2925.00 m
Sample source	Side Wall Core	Well core	
Source	Petrosys Pty Ltd - Australia	Composite sample?	<input checked="" type="checkbox"/>
Remark			

## Fossils

<b>General</b>		<b>Record info</b>	
Fossil	Cyathidites spp.	Fossil group	Sporites/Spore
Qualifier		Depth	2437.00 m
Confidence		Abundance count	22.00
Preservation type		Preservation quality	Poor to Fair
Fossil type		Preferred?	
Source	Petrosys Pty Ltd - Australia		
Remark			

## Interpretation

<b>General</b>		<b>Record info</b>	
Top md	2346.00 m	Base md	2925.00 m
Age description		Source	Petrosys Pty Ltd - Australia
Stage (from)		Stage (to)	
Formation (from)		Formation (to)	
Confidence		Qualifier	
Preferred?	Y	Analyst	Petrosys Pty Ltd
Ecozone	middle to inner shelf	Related sample	2346 / 2925
Remark			

## Completions

A screen has been added to capture well completion information.

<b>General</b>		<b>Record info</b>	
Source	Petrosys Pty Ltd - Australia	Basin	
Completion date	19-SEP-2017	Formation	
Completion method		Top depth	253.00 m
Completion type	Gravel Pack	Top formation	
		Base depth	255.00 m
		Base formation	
Remark			

## Sand summaries

A screen has been added to capture sand summary information for the well, such as sand and pay sizes, porosity and water saturation.

General		Record info	
Sand name	PATCH	Source	Petrosys Pty Ltd - Australia
	<b>Top</b>	<b>Base</b>	<b>Interval</b>
Gross	1357.00 m	1368.00 m	11 m
Porosity	m	m	m
Net sand	14.30 m	Total sand	14.30 m
Net pay	2.70 m	Average porosity	17.00 %
Net porosity	17.00 %	Average Sw	54.00 %
Net Sw	53.00 %	HPV	0
Basin	Cooper-Eromanga Basin	Formation	Patchawarra Formation
Remark			

## Sample Analysis

Screens have been added to capture gas and water analysis details.

### Analysis Details

General		Remarks		Record info	
Basin	Bowen-Surat Basins	Source	Petrosys Pty Ltd - Australia		
Top formation	Bandanna Fm	Base formation	Kaloola Mbr		
Top depth	674 m	Base depth	885 m		
Analysis company	Petrosys Pty Ltd				
Analysis date	20-SEP-2017	File number	152		
Analysis quality	REAL				
Collection type		Sample location			
Received date	15-SEP-2017	Sample date	10-SEP-2017		
Reported date	28-APR-2017	Reported tvd	674 m		

## Water Analysis

<b>Analysis</b>	<b>Remarks</b>	<b>Record info</b>
Analysis source	Petrosys Pty Ltd - Australia	Obs# 2
Water type	CalciumChloride	Water ph 8.7
Sample water type		Salinity type Primary
Water salinity	5300.00 ppm	Salinity reported UOM
Reservoir temperature	degC	Water density g/cm3
Water temperature	degC	Water resistivity ohm_m
Data source	Ambrozi/Rep	
<b>Well test</b>		
Test source		Test type
Test number		Run number

## Gas Analysis

<b>General</b>	<b>Record info</b>		
Fluid type	Gas	Source	Petrosys Pty Ltd - Australia
Remark			
Well test			
Test source		Test type	
Test number		Run number	

## Relationships

A screen has been added to define relationships between wells, such as sidetracks or intersections.

Well	Relationship type	Related well
AC 24 SS1 ST1	is Sidetrack of	AC 24 SS1

## Well Status

A screen has been added to capture the current and historic statuses of the well. The current well status is still displayed and edited via the well header.

<b>General</b>	<b>Record info</b>
Source	URIENWILD
Status	EXPLOR.
Date	
Remark	INITIAL PPDM38 MIGRATION: DATE: 20120610 SID: vtst

## Tops – Allow top and base depths to be specified

The Tops screen has been extended to allow entry of both a top and base depth at the same time. The top/base TVD and TVD SS will be automatically computed using directional survey data, if it exists.

General	Miscellaneous	Remarks	Data quality
Basin	Powder River Basin	Formation	SHANNON UPPER
Type	Formation	Unit type	Formation Top
Pick date		Dominant lithology	
Source	Rocky Mountain Oilfield Testing Center	Interpreter	Brian J. Black
Top depth	104.99 m	Base depth	132.05 m
Top TVD	104.99 m	Base TVD	132.05 m
Top TVD SS	1487.89 m	Base TVD SS	1460.83 m
Top TWT		Base TWT	

# Records Management Extensions

Several new features have been added to Records Management (RM).

## Copies

The Copies functionality can be used to specify the lineage of an RM item, by associating two items together as a 'Copied to' or 'Copied from' relationship. Copies can also be defined as full or partial copies.

Has been copied to

Storage path	Barcode	Title / filename	Category	Subcategory	Full copy?	Ancillary?	Attachments?
This Records Management item has not been copied to another item							

Has been copied from

Storage path	Barcode	Title / filename	Category	Subcategory	Full copy?	Ancillary?	Attachments?
D:/data/digital_well_data/Australia/BOWENSURAT/E		00000948_008.tif	Well Completion Report		✓	✗	✗

## Keywords

The Keywords screen allows assignment of predefined keywords to an RM item. These keywords can be used to quickly search and filter items.

### Keywords screen

**General** | **Record info**

Word: 3D

Source: Petrosys Pty Ltd - Australia

Effective date: \_\_\_\_\_

Expiry date: \_\_\_\_\_

Remark: \_\_\_\_\_

### Searching

Search **Keywords** 3D

[contains] '3D' ✗ Clear

### Filtering

- Keywords
  - 2D (9)
  - 3490 TAPE (28)
  - 3D (49)
  - ARCHIVE (45)

## Ancillary Data

The ancillary data screens can be used to capture additional information about an RM item that relates to a specific type of item. The currently ancillary types are Well, Seismic survey, Permit, Borehole, Culture and Other geophysical. Each type has a custom interface with fields relevant to the selected type.

### Example Ancillary Screen (Well)

UWI	300000291389	Well name	BA 504 1	
Contractor	Petrosys Pty Ltd	Originator	Petrosys Pty Ltd	
Author	Petrosys	Publication		
Media identifier		File no	1	
Top depth	1368.00	m	Point depth	m
Bottom depth	1649.00	m	Depth units	Metres
Vertical Scale (cmVsec)		Original depth units		
Log run		Curve name		
Log tool type		Curve type		
Remark				

## Basins, Fields and Permits

Screens have been added to allow links between RM items and Basins, Fields and Permits to be added or removed.

### Example screenshot (Basin assignment)

The screenshot shows the 'Assign Basin' interface. On the left is a table with columns: Basin name, Type, Country, Oil show, Gas show, Water show, Condensate show, CSG show, Coal show, and Geology. The first row shows 'Adavale Basin' with Type 'Basin' and Country 'Australia'. On the right is a detailed record view for 'Adavale Basin' with fields for Basin name, Basin short name, Type, Country, Rock type, Source, Oil show, Gas show, Water show, Condensate show, CSG show, Coal show, Age description, Upper age description, Lower age description, and Remark. At the bottom right, it says 'Created by PETROSYS on 09-JAN-2014 18:08:28 . Last updated by ALEC on 09-JUL-2014 11:05:05 .' and has an 'Unassign' button.



## Detailed Release Notes Summary dbMap/Web 2017.2.1

### Enhancements

#### *dbMap/Web - Client*

[67099](#) CSG Portal (Origin)

#### *dbMap/Web - General*

[68957](#) Added support for dbMap GIS as source for geometry Import

[67464](#) Records Management - Common fields and document content searches integrated

#### *dbMap/Web - PLDB*

[67458](#) Added import option for Drilling Opportunity Target Resource Computation screen

## Detailed Release Notes Summary dbMap/Web 2017.2.1

Bug Fixes

## Petrosys Release dbMap/Web 2017.2.1

Detailed Release Notes

### [dbMap/Web - Client](#) [Enhancements](#)

#### **CSG Portal (Origin)**

67099

Functionality has been added to dbMap/Web to replace the Origin CSG Portal.

### [dbMap/Web - General](#) [Enhancements](#)

#### **Added support for dbMap GIS as source for geometry Import**

68957

Direct import from dbMap GIS feature has been implemented for all geometry capable entities in dbMap/Web: basins, fields, permits and facilities.

#### **Records Management - Common fields and document content searches integrated**

67464

The search functionality in the records management panel has been enhanced to combine searching document contents and record metadata.

### [dbMap/Web - PLDB](#) [Enhancements](#)

#### **Added import option for Drilling Opportunity Target Resource Computation screen**

67458

An option to import a spreadsheet containing a resource computation has been added to the Drilling Opportunity Target's resource computation child screen. Now it's possible to create a resource computation for a DOP/Target by loading an existing one into it.

## Detailed Release Notes Summary dbMap/Web 2017.2

### Enhancements

#### *dbMap/Web - Client*

- [67193](#) Added 'Attachments' options to Perforation screen (Greymouth)
- [66691](#) Well Test grid columns updated (Origin)
- [67042](#) Wells / RFT screens converted to use PPDM style units (Santos)
- [67361](#) WSC Field lookup only lists relevant fields (Origin)

#### *dbMap/Web - General*

- [64280](#) Added ability to specify a base depth and to compute TVD and TVD/SS for well formation tops
- [66931](#) New Permit Alias screen added
- [68751](#) PPDM 3.8 Wells Module Extensions
- [68756](#) Records Management Extensions
- [67340](#) Users can now change their passwords in dbMap/Web

## Detailed Release Notes Summary dbMap/Web 2017.2

### Bug Fixes

#### *dbMap/Web - Client*

[68783](#) Fixed advanced search filters for sand summaries (Santos)

#### *dbMap/Web - General*

[68625](#) Lookup dependency issue in Data Exchange screens fixed

[67330](#) Usernames with a full stop can now be added and edited

[68559](#) Records can now be added to an existing public selection list

[67754](#) Oracle TIMESTAMP columns are now properly identified in advanced search

[68136](#) Log date field in the well logs browser's log run block changed to show the log's effective date

#### *dbMap/Web - PLDB*

[68264](#) Creation of business unit related portfolio snapshot fixed

## Petrosys Release dbMap/Web 2017.2

Detailed Release Notes

### [dbMap/Web - Client](#) [Enhancements](#)

#### **Added 'Attachments' options to Perforation screen (Greymouth)** 67193

The 'Attachments' option has been added to the 'dbMap/Web - Wells / Perforations' screen. This allows notes, web links, images and links to records management items to be added to the perforation.

#### **Well Test grid columns updated (Origin)** 66691

The well test panel list, which showed two columns labeled "Objective formation", has been modified to show only one. The remaining column contains the formation name or its identifier, whatever is available.

#### **Wells / RFT screens converted to use PPDM style units (Santos)** 67042

The 'dbMap/Web - Wells / RFT' screens have been converted to use PPDM style units (similar to the unit handling in PLDB). This allows for consistent units to be displayed across the RFT screens.

#### **WSC Field lookup only lists relevant fields (Origin)** 67361

The 'Field' lookup on the 'dbMap/Web - Well Spec Cards / Well Details' screen has been modified to only list fields with a 'Field type' of 'Surface Field Area'. The 'Field Type' can be modified on the 'dbMap/Web - Fields' screen.

---

### [dbMap/Web - Client](#) [Bug Fixes](#)

#### **Fixed advanced search filters for sand summaries (Santos)** 68783

Fixed a bug in advanced filter for sand summaries under well/ reservoir summaries. The bug was preventing any filter criteria from becoming effective.

### [dbMap/Web - General](#) [Enhancements](#)

#### **Added ability to specify a base depth and to compute TVD and TVD/SS for well formation tops** 64280

dbMap/Web has been enhanced to allow the definition of a base depth to a formation top. There are also provisions in place to compute TVD and TVD/SS from an informed top or base depth, as well as for manually overriding the computed values in each case.

#### **New Permit Alias screen added** 66931

A new screen, adding the ability to define aliases for permits, has been added to the "Permit" screen in all PPDM 3.8 related builds.

#### **PPDM 3.8 Wells Module Extensions** 68751

The PPDM 3.8 Wells module has been extended to include data entry screens for paly/paleo, completions, sand summaries, sample analysis (water and gas), well relationships and well status.

## Records Management Extensions

68756

Records management has been extended to include functionality for copied items, keywords, ancillary data and the ability to link items to Basins, Fields and Permits.

## Users can now change their passwords in dbMap/Web

67340

dbMap/Web's user management related functionality has been improved, allowing users to change their own passwords directly in dbMap/Web.

---

### dbMap/Web - General

### Bug Fixes

#### Lookup dependency issue in Data Exchange screens fixed

68625

A bug, causing dependency among lookup fields to be ignored in the Data Exchange screens, has been fixed; all defined dependencies are now properly enforced.

#### Username with a full stop can now be added and edited

67330

A bug, preventing usernames containing a full stop (SOME.USER, for instance) from being added and/or updated via the user administration screen of dbMap/Web, has been fixed.

#### Records can now be added to an existing public selection list

68559

Fixed a bug preventing users from adding items to a public selection list, if one of their selected items was already in the stored list.

#### Oracle TIMESTAMP columns are now properly identified in advanced search

67754

A bug, causing TIMESTAMP columns to be treated as TEXT, rather than DATES, in dbMap/Web's advanced search, has been fixed.

#### Log date field in the well logs browser's log run block changed to show the log's effective date

68136

Fixed a but causing the log date field in the well logs browser's log runs section to show the database row changed date, rather than the log's effective date.

---

### dbMap/Web - PLDB

### Bug Fixes

#### Creation of business unit related portfolio snapshot fixed

68264

A query bug, preventing a user from creating a snapshot for a portfolio linked to a business unit, has been fixed; this bug didn't affect corporate related portfolios.