

Azure Data Manager for
Energy (ADME)

Customer & Partner Evidence

Interica OneView™



With Interica **OneView** quickly and easily **DISCOVER** data across on-premise, cloud and now OSDU data environments, clearly determine which datasets & projects contain selected data objects to inform businesses decisions. **ANALYSE** data to see a holistic view of subsurface data landscapes for improved time to decisions, more efficient data search, and effective storage management. Automate data **ACTIONS** such as Migration, Archival and Backup integrating with Azure blob storage.

Discover



Analyse

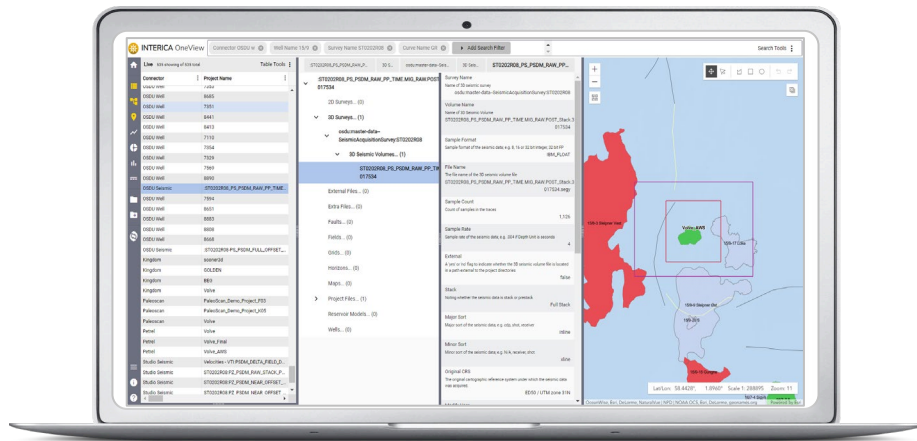


Act



Interica OneView™ is THE platform for the E&P sector to discover, analyse, and automate petrotechnical application data management.

- Interica OneView gives immediate visibility across the petrotechnical environment
- The platform is deployed in Azure or run at the edge in a hybrid mode accelerating migrations
- Data can be automatically streamed based on automated policies directly to Azure storage including direct blob support



Challenge

- Upstream Oil & Gas companies deploy many complex applications to interpret and model the subsurface. Applications generate iterations from base data resulting in thousands of projects and associated datasets, while projects contain company IPR and deliver competitive advantage. **Migration needs a holistic view.**

Solution

- Interica OneView delivers a single pane of glass view across the entire subsurface application environment, now extended to support the OSDU Data Platform. Dynamically liberating rich spatial and metadata from applications, databases and the OSDU, **IOV gives unparalleled insight into application, data and user footprints.** Automated actions migrate projects & data into and from Azure environments, including direct streaming to blob storage. Remaining petrotechnical data can be preserved via automated archiving routines

Customer value

- Interica's customers **save millions of dollars** through optimization of petrotechnical storage environments, discovery of lost datasets and rationalization of application portfolios.

Interica OneView™

Overview

- Interica OneView provides a “single pane of glass” view over a company’s petrotechnical application environment. This extends to not only frequently used applications in the Schlumberger suite such as Petrel, Techlog and Studio, but also other applications such as Landmark’s suite, Aspentech and EPOS, Eliis and GeoSoftware’s Hampson Russel and Jason. Interica OneView allows for the Discovery of application and underlying seismic and well datasets and the analysis and migration of data into OSDU Data Platform or DELFI.

Solution

- Native and integrated OSDU, Schlumberger DELFI capability
- Extensive experience running in DELFI
- Multi application extensive working to the entire petrotechnical suite
- Powerful automation allowing self service data management

Benefits

- Accelerates the discovery of data across a multi application environment
- Runs in either an on-premise or Cloud environment
- Allows migration to occur using rule based outcomes with simulation of these
- Clean up the legacy post migration using the multi-vendor archiving capabilities
- Deploys out of the box technology in Azure Data Manager for Energy (ADME)



[Learn more about Interica OneView deployed on Azure Data Manager for Energy \(ADME\)](#)

"Interica OneView is unique in integrating with all common petrotechnical application environments. It can scan across multiple file systems and in this example, running on Azure Data Manager for Energy, the powerful functionality is highlighted and the out of the box capabilities demonstrated, allowing accelerated deployment of the OSDU Data Platform."