

Test drive the new Petrosys Plug-in for ESRI. Get smarter answers faster.



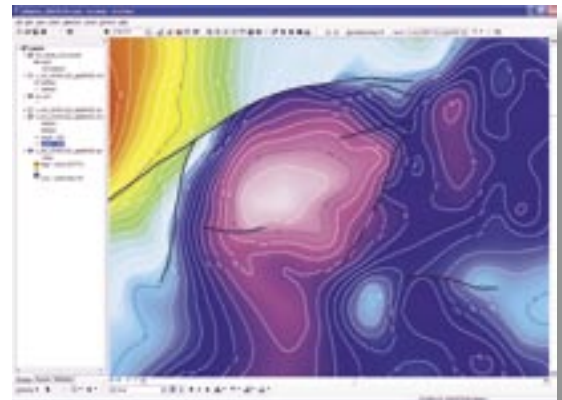
Gridding. Contouring. Volumetrics calculations. You can't do your best E&P mapping work without them. Now, the Petrosys Plug-in for ESRI brings these essential capabilities to your world. Putting the industry's most sophisticated and integrated surface modeling tools right where you need them—in your GIS system. Giving you access to all kinds of vital data so you can compute complex structures that take faults and other discontinuities into account. Quickly, easily, accurately.

Harness the power of the Petrosys Plug-in for ESRI to:

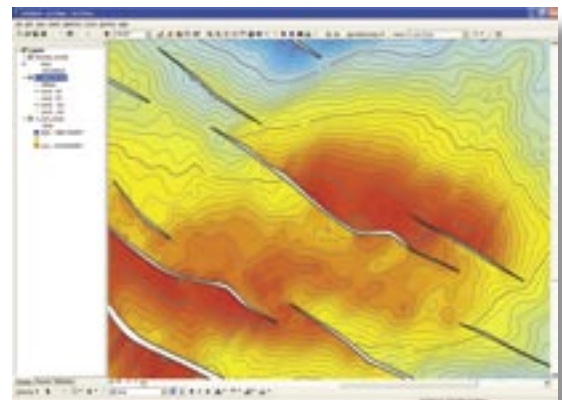
- More easily and regularly integrate subsurface and spatial data with your GIS system
- Reduce the complexity of data exchange between your technical and GIS systems
- Improve data management of subsurface knowledge through effective and consistent access to data - less data copying, fewer versions
- Support more workflows with access to surface modeling capabilities not limited by consistent handling of faults and discontinuities
- Provide access to surface modeling capabilities and displays with a low learning curve
- Effectively integrate OpenWorks, GeoFrame, Finder, SMT, PPDM and other data sources directly accessible through Petrosys



Unearth A Masterpiece.



Vital G&G technology, smart algorithms and interpolation tools come together with ESRI GIS spatial data almost effortlessly to give you the real picture.



Access, run and save surface modeling workflows. You're a guru now. Tie seismic velocities or depths to well data. Map proximities and sample densities. Back interpolate velocity, time or depth data to well or seismic information. Estimate reservoir extents. Depth convert. Perform volumetrics calculations. Easily.