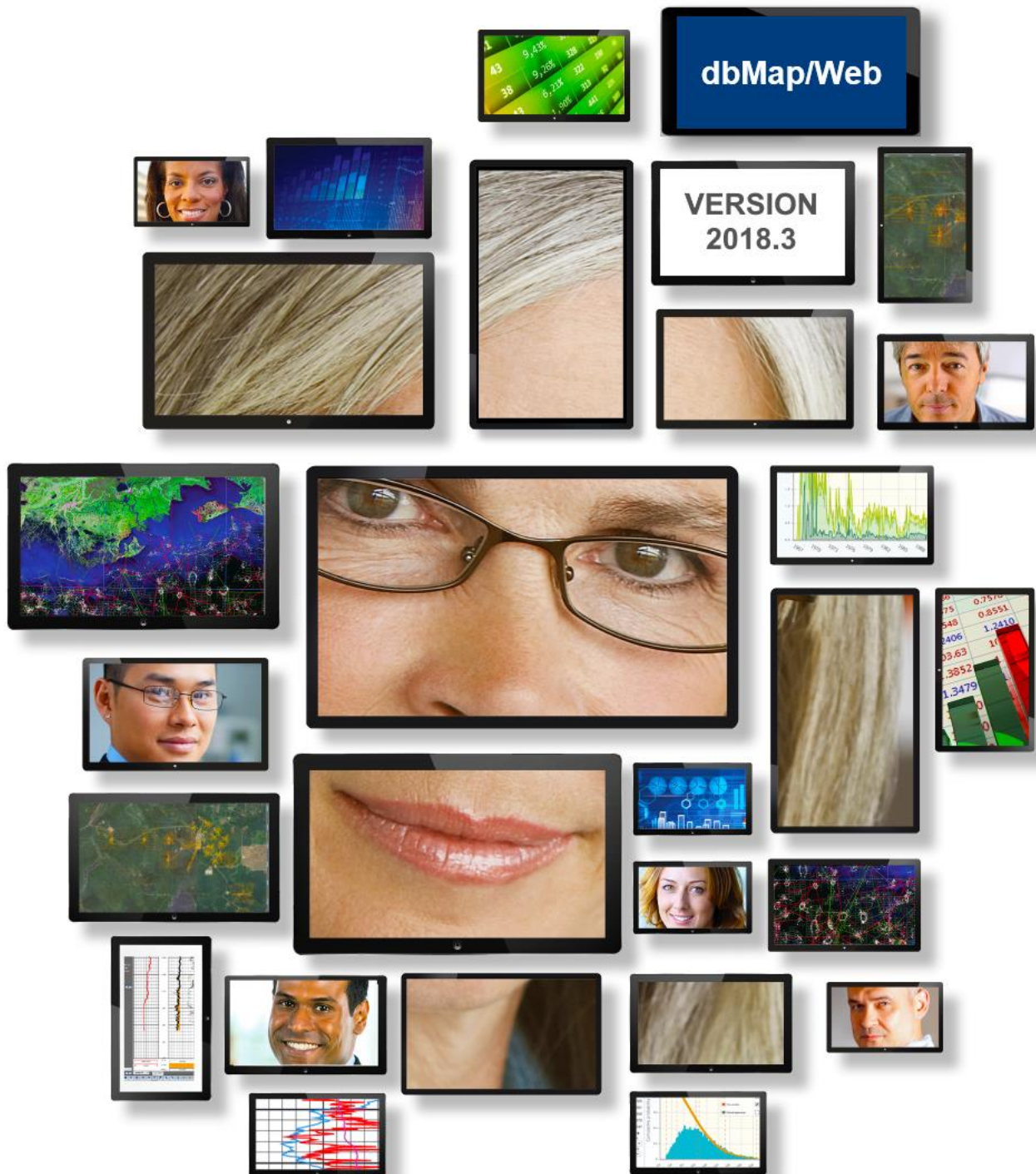


# SOFTWARE RELEASE NOTES

## dbMap/Web Version 2018.3.1



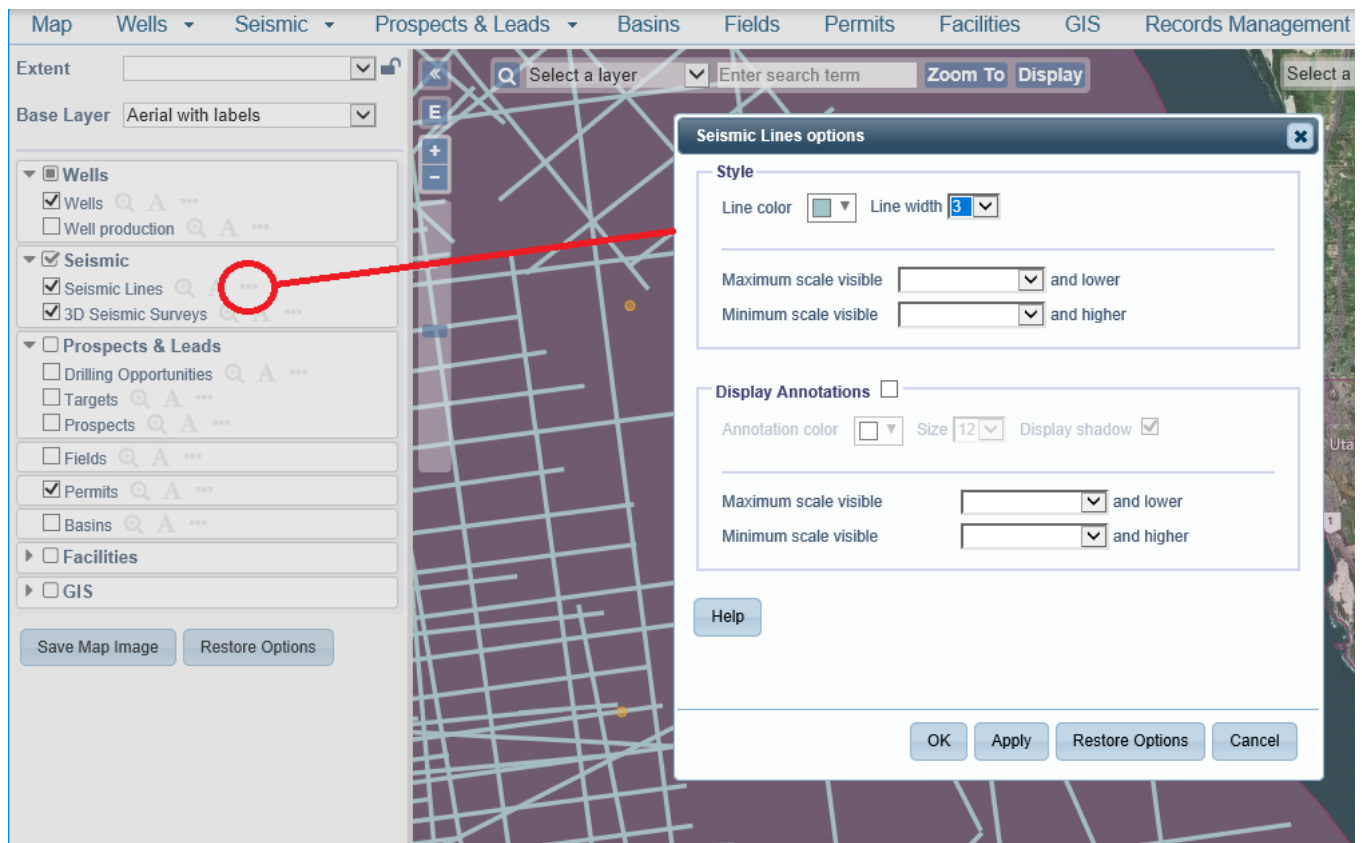
# Overview

dbMap/Web 2018.3 builds on our mapping enhancements delivered in 2018.2 with more mapping features and includes new charting functionality as well as many additional enhancements throughout the application.

## Mapping

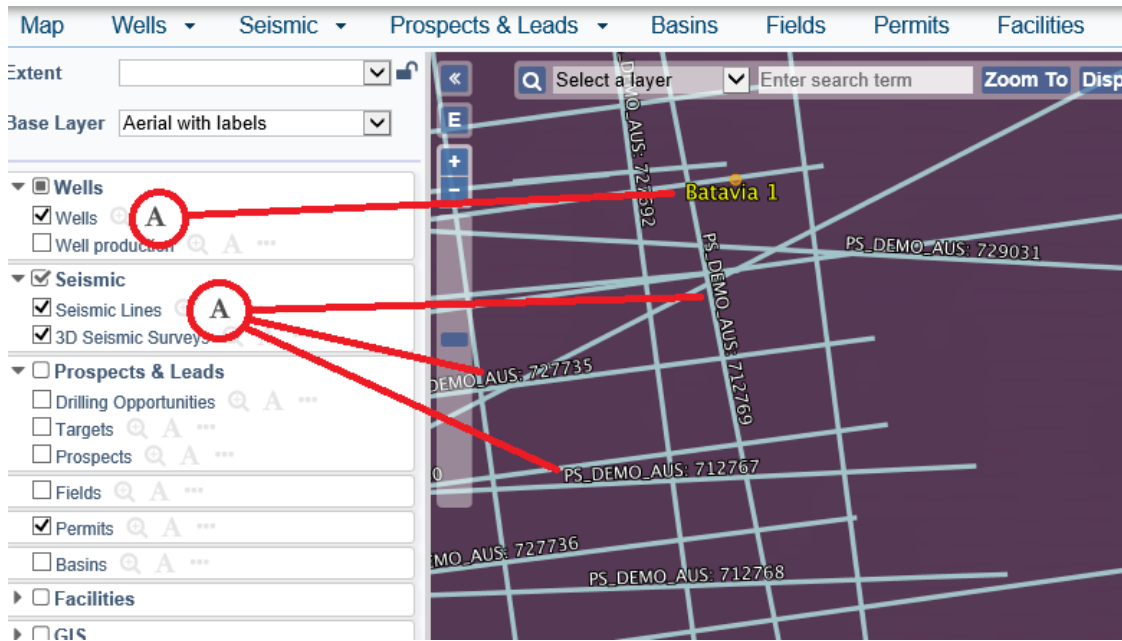
### Display Styles

Users can now change the display styles of map layers, including the size and colors of objects. These choices, along with the last viewed extent are persistent and remembered between sessions.



## Annotations

The ability to see the name of objects drawn on the map has been added. The annotations can be toggled on or off and styles modified per layer.

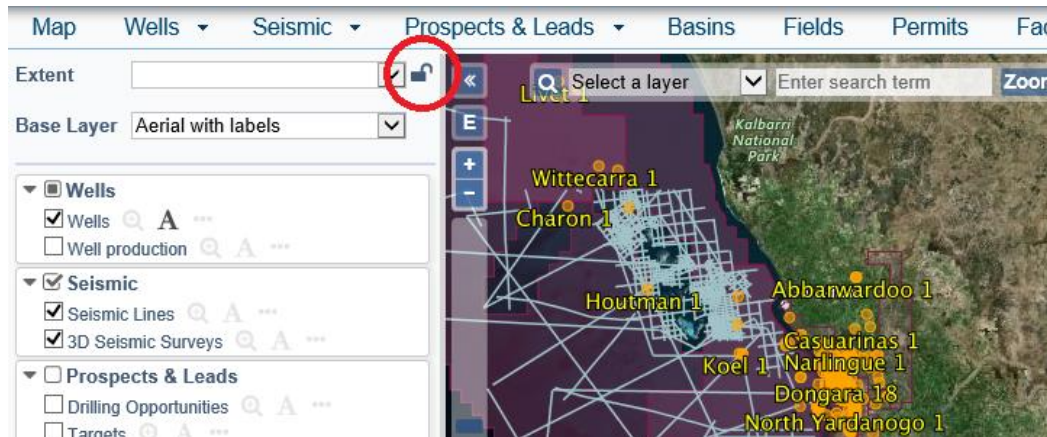


## Scale Dependent Options

Each layer can be automatically made visible or hidden based on your map scale. This can be used to hide some layers, like Seismic lines, when zoomed out to see the full extent of the map, and to hide large details like Basins when zooming to a smaller scale.

## Lock Extent

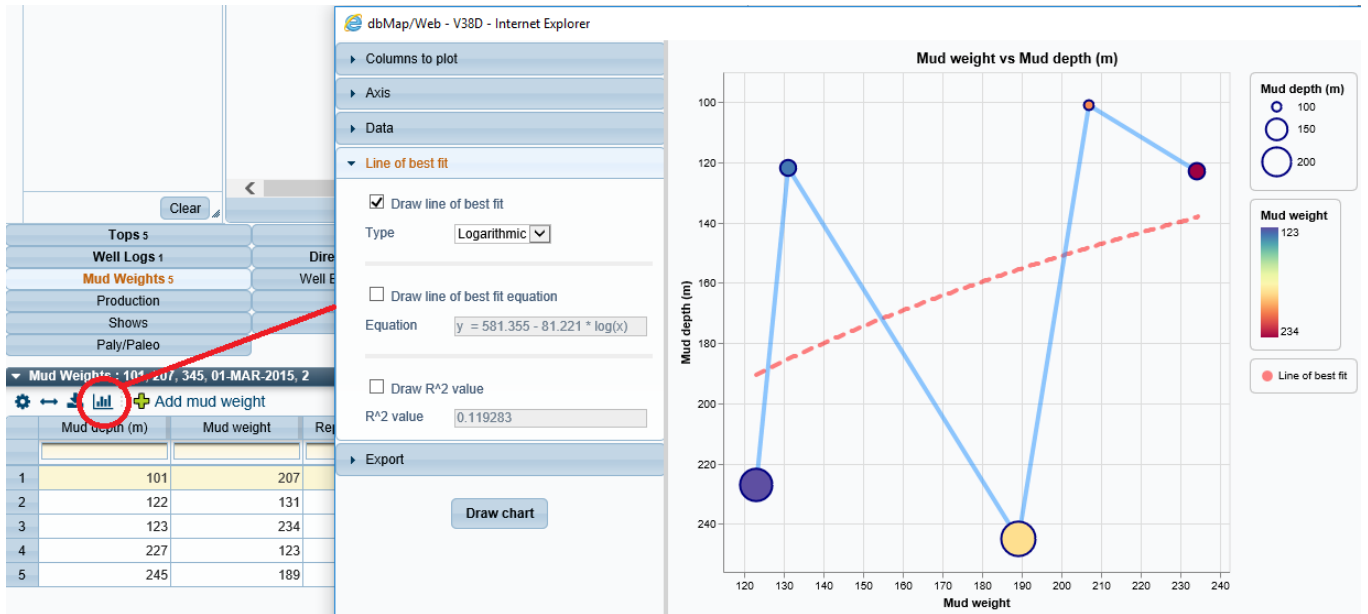
The current map extent can be locked to prevent accidental panning outside of it.



# Charting

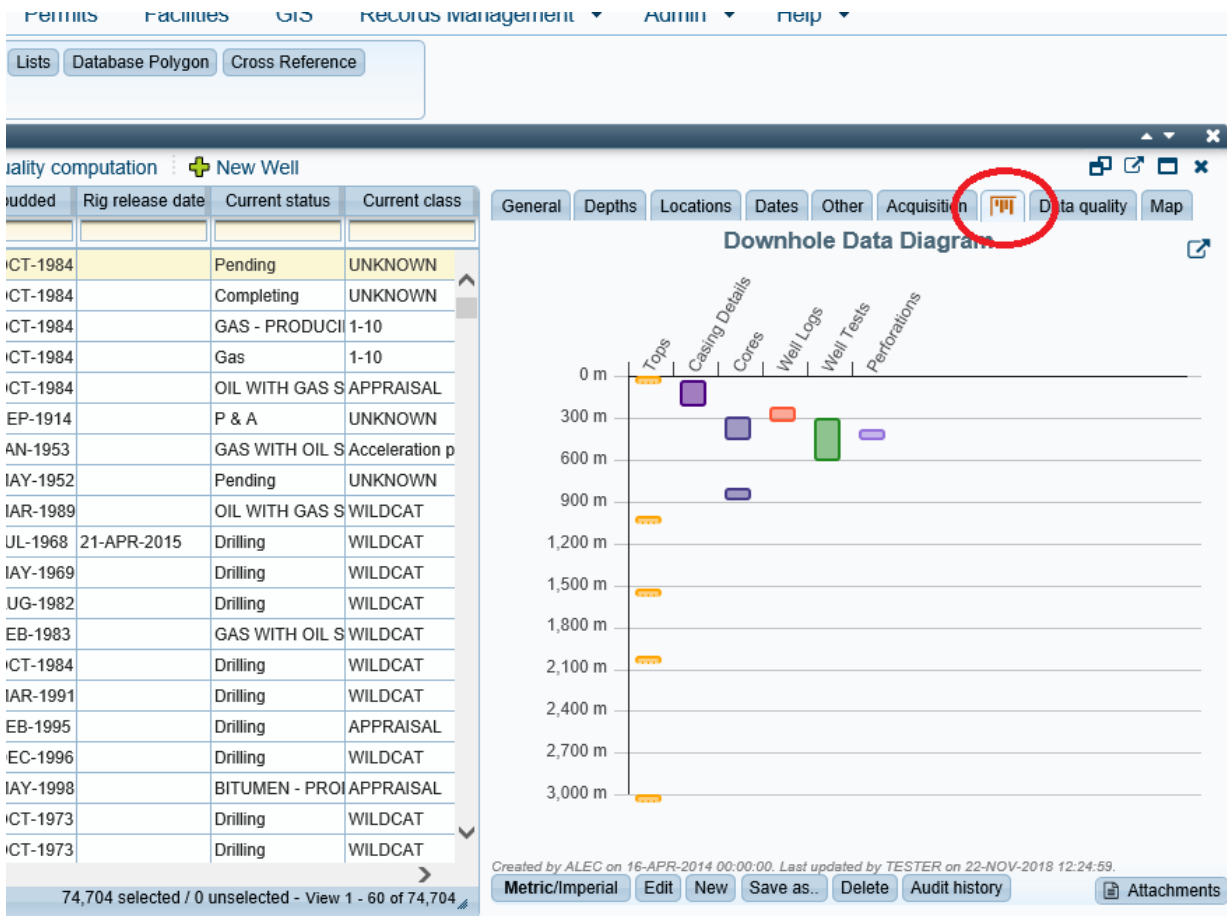
## Cross-plot charts

Data from reports and data panel lists can be plotted on a cross-plot chart that. Users can customise the chart in many ways including which columns to plot and drawing a line of best fit. The chart can be panned and zoomed and exported as an image.



## Downhole Data Diagram

A 'Downhole Data Diagram' tab has been added to the Well panel. This visualises the associated data based on depth. Hovering over an item will show some basic details while clicking on it will display the item's data screen. It can be opened in a new window with the 'Open in new window' icon top right.



## Detailed Release Notes Summary dbMap/Web 2018.3.1

### Enhancements

#### *dbMap/Web - Client*

[72861](#) Wells / Reservoir Summaries - Chronostrat Top and Base depth clarified as TVD values (Santos)

[72721](#) Update logo (Origin)

#### *dbMap/Web - PLDB*

[72930](#) The Prospect Chronology screen displays the well name instead of the well UWI

## Detailed Release Notes Summary dbMap/Web 2018.3.1

### Bug Fixes

#### *dbMap/Web - Client*

[72889](#) Fixed production chart screens when called from Petrosys PRO (Santos)

#### *dbMap/Web - General*

[72535](#) Mapping functionality disabled in desktop embedded browser

[72710](#) IE shows current map data instead of old cached data

[72764](#) Performance improvement when loading data screen

[72805](#) The Column titles on the Download Data Diagram when viewed from Petrosys PRO are not aligned correctly

#### *dbMap/Web - PLDB*

[73070](#) Fixed a potential screen hang when double clicking on lookups during a resource computation save operation in IE11

[72983](#) Fixed target dependencies lookup when run from Petrosys PRO

[72902](#) Fixed bug on "Manage deleted prospects" screen

## Petrosys Release dbMap/Web 2018.3.1

Detailed Release Notes

### [dbMap/Web - Client](#) [Enhancements](#)

#### **Wells / Reservoir Summaries - Chronostrat Top and Base depth clarified as TVD values (Santos)** 72861

The "Wells / Reservoir Summaries - Chronostrat" panel now qualifies Top and Bottom with TVD.

#### **Update logo (Origin)** 72721

The logo for Origin has been updated.

---

### [dbMap/Web - Client](#) [Bug Fixes](#)

#### **Fixed production chart screens when called from Petrosys PRO (Santos)** 72889

A couple of bugs in the production chart screen have been fixed:

1. When called from Petrosys PRO, the chart is now correctly displayed.
2. The multi-well chart is now operating properly in all platforms.

---

### [dbMap/Web - General](#) [Bug Fixes](#)

#### **Mapping functionality disabled in desktop embedded browser** 72535

The maps in dbMap/Web were not displayed correctly when loaded via Petrosys PRO. This was due to an issue with the WebKit version being used. An upgrade to the WebKit version will be included in Petrosys PRO 2019.1 and will resolve the issue. Until this can be released, the mapping functionality in dbMap/Web has been disabled when accessed via Petrosys PRO.

#### **IE shows current map data instead of old cached data** 72710

A bug experienced in IE, that prevented maps from refreshing, has been fixed.

#### **Performance improvement when loading data screen** 72764

Performance improvements have been made to reduce the time taken to load data screens e.g. the well header.

#### **The Column titles on the Download Data Diagram when viewed from Petrosys PRO are not aligned correctly** 72805

The column titles on the Downhole Data Diagram have been correctly aligned when viewed from Petrosys PRO.

**The Prospect Chronology screen displays the well name instead of the well UWI** 72930

The "Prospect chronology" screen has been modified to display the actual well name, rather than the UWI, when a well is linked to the event.

---

**Fixed a potential screen hang when double clicking on lookups during a resource computation save operation in IE11** 73070

A bug, causing the save resource computation screen to hang in INTERNET EXPLORER 11 at times, has been fixed.

**Fixed target dependencies lookup when run from Petrosys PRO** 72983

A bug preventing the dependency lookups from being displayed when PLDB was run from Petrosys PRO has been fixed.

**Fixed bug on "Manage deleted prospects" screen** 72902

A bug affecting the "manage deleted prospects" screen's tree filter has been fixed.



## Detailed Release Notes Summary dbMap/Web 2018.3

### Enhancements

#### *dbMap/Web - Client*

- [72693](#) Users with administrative privileges can now edit approved WSCs (Origin)
- [71582](#) Some advanced search criteria for wells will no longer timeout (Santos)
- [72362](#) LIMS URL changed on wells screen (Santos)
- [72004](#) Mapping - Add custom base layer (Santos)
- [72206](#) Perforation Diagram - Perforations reinstated when any isolation type is removed (Santos)
- [71668](#) Well header links hidden when running dbMap/Web from desktop (Santos)
- [72602](#) Key permit filter added to Wells and RM (Origin)
- [72256](#) Perforation Diagram - Isolation shading removed when reperforated for all isolation types that do not isolate all below (Santos)
- [71735](#) AREA and REGION area types can now be linked to RM records (Greymouth)
- [72666](#) Query timeout limits increased (Origin)
- [72176](#) WSC - Decimal places removed from all numbers except those in the WELL DETAILS section (Origin)

#### *dbMap/Web - General*

- [71863](#) MD, TVD and TVDSS depths added to sand summaries screen

#### *dbMap/Web - PLDB*

- [72063](#) Tab and row not highlighting for some errors

## Detailed Release Notes Summary dbMap/Web 2018.3

### Bug Fixes

#### *dbMap/Web - Client*

- [71734](#) Production charts are displayed as expected from Petrosys PRO (Santos)
- [71669](#) All perforations are now plotted on the Perforation Diagram (Santos)
- [72276](#) Production charts now display as expected (Santos)
- [72469](#) Incorrect advanced search configuration on Composition and Catalogue Reference screens (Santos)
- [72569](#) Wells - Coordinate fields displayed correctly (Santos)
- [72108](#) The Today line on the Perforation Diagram no longer going too deep (Santos)
- [72695](#) The Well path image is now displayed on the Wells / Horizontal Drill / Well path image tab (Origin)
- [72408](#) Wells - Reinstated Ground elevation, Kelly bushing and Driller TD fields (Origin)

#### *dbMap/Web - General*

- [72634](#) New permits are assigned the correct status type
- [71902](#) Stored Queries detect and replace all runtime parameters

#### *dbMap/Web - PLDB*

- [72366](#) Custom distributions can now be edited without error
- [71769](#) Total untruncated raw and sales figures are now computed when there is no associated gas

# Petrosys Release dbMap/Web 2018.3

Detailed Release Notes

## [dbMap/Web - Client](#) [Enhancements](#)

### **Users with administrative privileges can now edit approved WSCs (Origin)**

72693

The Well Spec Card (WSC) authorisation scheme has been changed so that users with administrative privileges are able to edit any WSC, including those that have been approved.

### **Some advanced search criteria for wells will no longer timeout (Santos)**

71582

The advanced query predicate for monthly production has been changed to boost performance of wells search involving monthly production data.

### **LIMS URL changed on wells screen (Santos)**

72362

The LIMS URL has been changed on the wells screen upon request.

### **Mapping - Add custom base layer (Santos)**

72004

Added in-house base layer to Santos map configuration.

### **Perforation Diagram - Perforations reinstated when any isolation type is removed (Santos)**

72206

The perforation diagram has been changed so that perforations are automatically reinstated when isolations of any type are removed. Previously, this happened only for isolations of type B, R, D or A.

### **Well header links hidden when running dbMap/Web from desktop (Santos)**

71668

As they cannot be easily made to work when dbMap/Web is called from PETROSYS PRO, the links normally presented on the wells header page in the SANTOS custom version have been hidden when the page is displayed in this way. All links will continue to be shown when dbMap/Web is called from an ordinary browser session.

### **Key permit filter added to Wells and RM (Origin)**

72602

The "permit" filter on the records management and the wells screens have been replaced by a hierarchy: a permit operator filter, which reports permits operated by APLNG, and a permits filter under this one.

### **Perforation Diagram - Isolation shading removed when reperforated for all isolation types that do not isolate all below (Santos)**

72256

Isolation shading was previously removed when a reperforation was detected, but only if the isolation type was B, R, D or A. This has been changed: now it's automatically removed for all isolation types that do not isolate all below.

### **AREA and REGION area types can now be linked to RM records (Greymouth)**

71735

The area types REGION and AREA have been added to the selectable area types when linking an area to an entry in records management (RM).

## Query timeout limits increased (Origin)

72666

Both the default and the long query timeout parameters have been set higher for ORIGIN, as requested (default increased to 4 minutes and long increased to 1 hour).

## WSC - Decimal places removed from all numbers except those in the WELL DETAILS section (Origin)

72176

All numeric data in the WSC report, except those items in the well details section, have been changed to be printed with no decimal places.

---

## dbMap/Web - Client

## Bug Fixes

### Production charts are displayed as expected from Petrosys PRO (Santos)

71734

A bug preventing a production chart to be displayed when invoked directly via PETROSYS PRO has been fixed.

### All perforations are now plotted on the Perforation Diagram (Santos)

71669

An incorrect query used to compute the Y axis range for metric wells has been modified to make it use the same criteria defined for non-metric ones. The previous query could cause some perforations to remain unplotted. Some padding has been added to the chart, too, in order to improve visibility.

### Production charts now display as expected (Santos) <sup>72276</sup>

Fixed a bug preventing production charts from loading on INTERNET EXPLORER 11 from a TOMCAT 7 (or newer) server.

### Incorrect advanced search configuration on Composition and Catalogue Reference screens (Santos)

72469

Advanced search for Wells / Well Pressure Tests / Interpretations and Wells / Well Tests / Interpretations will find the correct results without also searching for data existing in the parent panels as well.

### Wells - Coordinate fields displayed correctly (Santos) <sup>72569</sup>

Fixed a bug causing the well header coordinate fields to be rounded to three decimal places if coordinated were being displayed in DMS format by default.

### The Today line on the Perforation Diagram no longer going too deep (Santos)

72108

A couple of bugs in the perforation diagram have been fixed; these bugs caused the "today" marks to go deeper than they should and some annotations to be improperly rendered when an isolation was removed and another installed on the very same day for intersecting depth ranges.

### The Well path image is now displayed on the Wells / Horizontal Drill / Well path image tab (Origin)

72695

A bug that prevented the display of the Wells / Horizontal Drills / Well path image has been fixed.

### Wells - Reinstated Ground elevation, Kelly bushing and Driller TD fields (Origin)

72408

The "Ground elevation" "Kelly bushing" and "Driller TD" fields have been reinstated on the "dbMap/Web - Wells" screen.

**MD, TVD and TVDSS depths added to sand summaries screen** 71863

Measured depth, true vertical depth and sub-sea true vertical depth have been added to the sand summaries screen under wells.

---

**New permits are assigned the correct status type** 72634

New permits were not being assigned a status type when first created. This has been fixed.

**Stored Queries detect and replace all runtime parameters** 71902

A bug, disrupting the proper detection and replacement of list parameters in stored queries, has been fixed.

**Tab and row not highlighting for some errors** 72063

When PRC was released, PLDB was modified to make errors in computation parameters more visible and clear to the user. A bug, preventing some error conditions from being flagged and reported in a consistent way, has been fixed.

---

**Custom distributions can now be edited without error** 72366

A bug, that blocked the editing of custom distributions, has been fixed.

**Total untruncated raw and sales figures are now computed when there is no associated gas** 71769

A bug, causing the numbers for total untruncated raw and sales gas to be displayed as zero when a target has oil and gas but no associated gas, has been fixed.