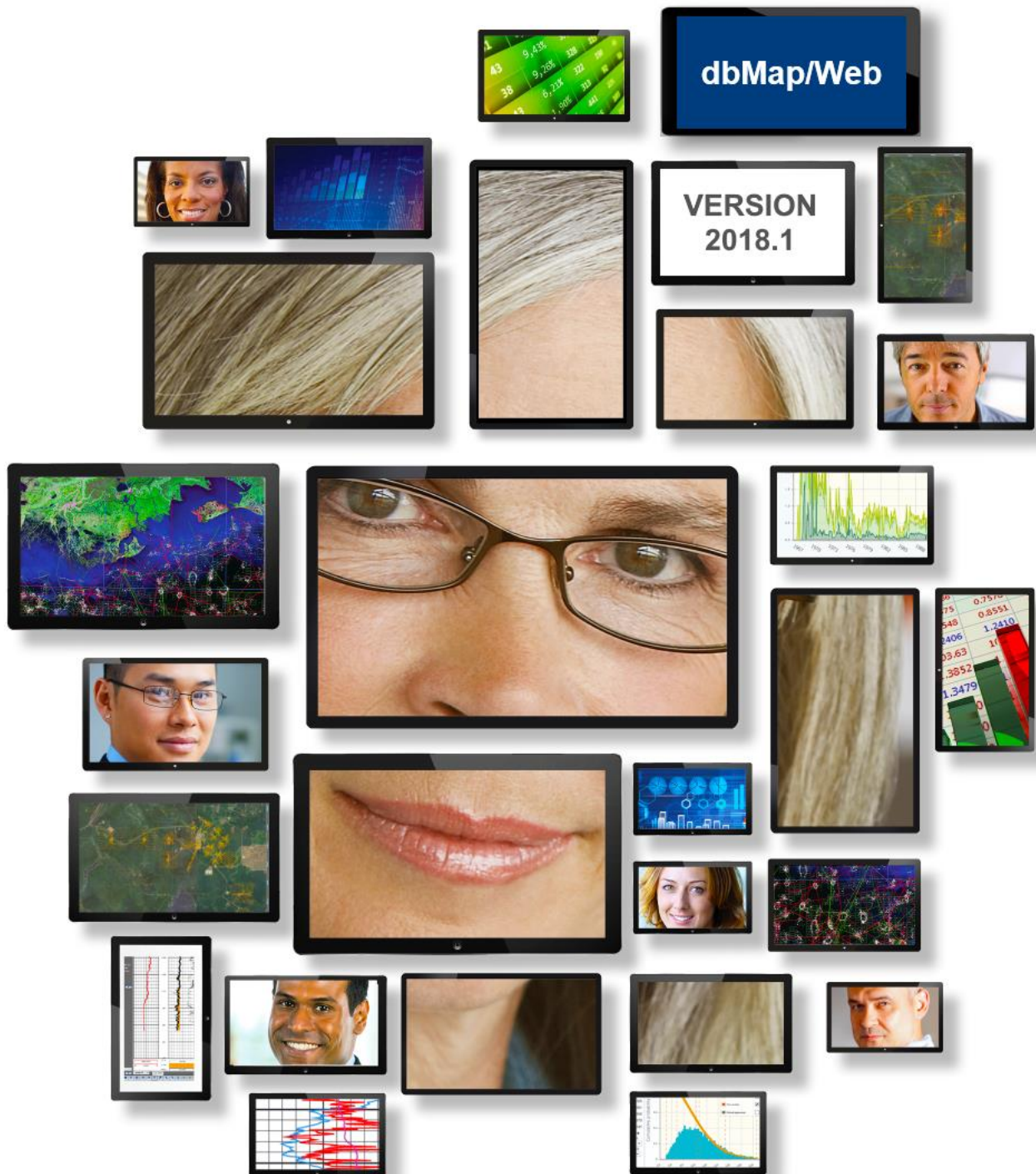


SOFTWARE RELEASE NOTES

dbMap/Web Version 2018.1



Overview

dbMap/Web 2018.1 focuses on extensions to “Records Management” and “Prospects & Leads” functionality, along with many minor enhancements throughout the application.

Records Management

Shopping cart

A shopping cart has been added to the Records Management screen to allow a selection of digital files to be added to the cart, then downloaded as a single ZIP archive file. The content of the cart can be reviewed, and an individual item or groups of items can be removed before downloading.

The screenshot shows the 'Records Management' window with a search bar at the top. A shopping cart icon in the top right corner indicates '6 items in cart'. The 'Add to cart' button in the toolbar is highlighted with a red box. The main table lists various files with columns for Title/filename, Barcode, Category, Sub category, Media type, Item ref number, and Container ref number.

	Title / filename	Barcode	Category	Sub category	Media type	Item ref number	Container ref number
1	1010m-1020m-Cuttings.jpg		Well	Stratigraphy	ELECTRONIC FILE		
2	1010m-1020m-Cuttings.small.jpg		Well	Stratigraphy	ELECTRONIC FILE		
3	BO_80z-14a-2271-geosphere_matched.sgy		Seismic	SEGY	ELECTRONIC FILE		
4	BO_80z-16-2271-geosphere_matched.sgy		Seismic	SEGY	ELECTRONIC FILE		
5	BO_86ma-054-1219_matched.sgy		Seismic	SEGY	ELECTRONIC FILE		
6	BO_86ma-055-1219_matched.sgy		Seismic	SEGY	ELECTRONIC FILE		
7	radnor-1a_deviation_survey.las		Well	Well Log	ELECTRONIC FILE		
8	radnor-1a_ec_curves.las		Well	Well Log	ELECTRONIC FILE		
9	radnor-1a_final.las		Well	Well Log	ELECTRONIC FILE		
10	radnor-1a_raw.las		Well	Well Log	ELECTRONIC FILE		
11	Rahi-1.pdf		Well	Well Completion Rept	ELECTRONIC FILE		
12	Salisbury-1.pdf		Well	Well Log	ELECTRONIC FILE		
13	Sand strength wellbore stability__PR2447L24.tif		Well	Wellbore Summary	ELECTRONIC FILE		
14	SAS (VSP and Checkshot)__PR1743L7.tif		Well	Checkshot	ELECTRONIC FILE		
15	SAS Checkshot__PR2163L13.tif		Well	Checkshot	ELECTRONIC FILE		
16	Well Completion Report. Upukerora-1, PPL38074.		Well	Well Completion Rept	ELECTRONIC FILE		Carter, M.; R
17	Well Completion Reports: Ron Macdonald-1, Dobson Pr		Well	Well Completion Rept	ELECTRONIC FILE		M.P. Cave

The 'RM Items cart' window displays a 'Cart summary' section with the following details:

- Selected items: 103
- Estimated size (uncompressed): 184 MB (based on items that have size populated)

Two summary tables are provided:

Format	Count
1 PDF	103

Category	Count
1 Unknown	103

Below the summary is a table of items in the cart:

	Title / filename	Barcode	Category	Sub category	Media ty
1	Toru-1_QC.pdf		Unknown		ELECTRO
2	Kupe South-1_GNS_D-T_qc.pdf		Unknown		ELECTRO
3	Ariki-1_GNS_D-T_qc.pdf		Unknown		ELECTRO
4	PR3320 Petroleum Systems in New Zealand - East Coa		Unknown		ELECTRO
5	Kiwa-1_QC.pdf		Unknown		ELECTRO
6	Waihapa-1B_GNS_D-T_qc.pdf		Unknown		ELECTRO

At the bottom of the window, there are buttons for 'Download', 'Empty cart', and 'Close'. The status bar shows 'View 1 - 60 of 103'.

Dashboard

A new dashboard has been added for Records Management giving a summary of the digital and physical items available. The dashboard can be configured to suit user requirements.

dbMap/Web - RM Dashboard

tester is logged in [Logout](#)
V38T v2018.1.251028

Wells ▾ Basins ▾ Fields ▾ Facilities ▾ Permits ▾ Seismic ▾ Prospects & Leads ▾ Records Management ▾ GIS ▾ Titles ▾ Leases ▾ Admin ▾ Help ▾

RM Filter

[Clear](#)

- Basin
- Category
- Media type
- Permit
- Country
- Source
- Digital format
- Keywords
- Quality
- Confidence
- Catalogued
- Storage location

Demographics | [Data Admin](#)
91 documents selected | [Reload tab](#)

Total Items Catalogued

1 5 5 3 0 9

Catalogued in Past 7 Days

0

Catalogued in Past 30 Days

0

Catalogued in Past 90 Days

0

Links to EAP Objects

Link info
5 Items Linked to Seismic Lines
9 Items Linked to Seismic Surveys
45 Items Linked to Wells

View 1 - 3 of 3

Top 10 Categories

Category	Count
Well	~65
DOCUMENT	~15
FACILITY	~10

Top 10 Media Types

Media Type	Count
ELECTRONIC FILE	~65
CORES/CUTTINGS	~15
Web Link	~10
HC/CD	~5
ELECTRONIC	~5

Top 10 Digital Formats

Format	Count
TIFF	~15
JPEG	~10
KSD	~5
SGY	~5
KNX	~5
PDF	~5
LAS	~5
P190	~5
LOG	~5
Others	~15

Top 10 Sources

Source	Count
American National Standards In	~45
DIAMOND	~15
Dept. of Primary Industries	~10

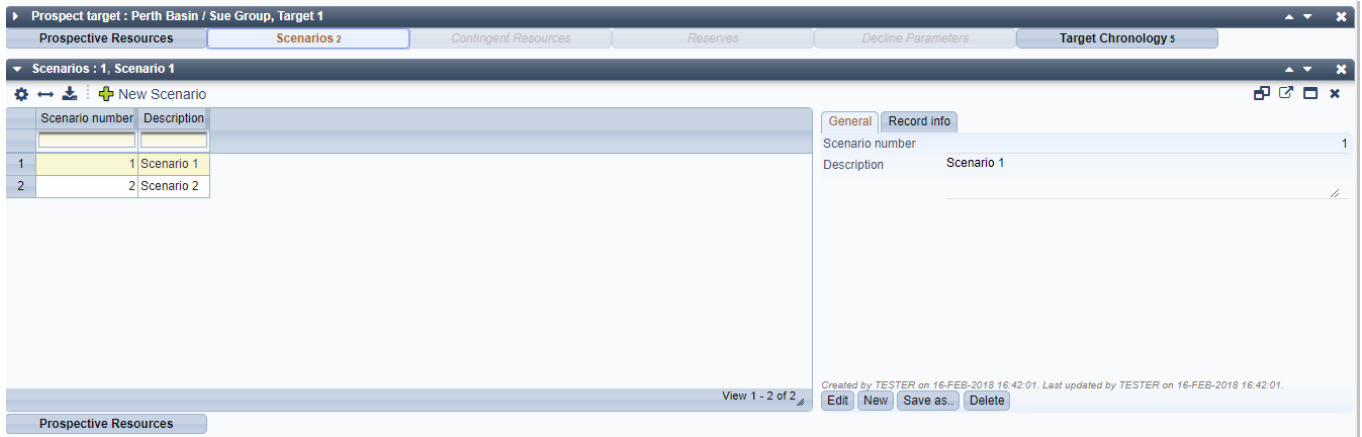
Top 10 Cataloguers

Cataloguer	Count
TESTER	~45
No cataloguer assigned	~15
JOSEPHINE	~10

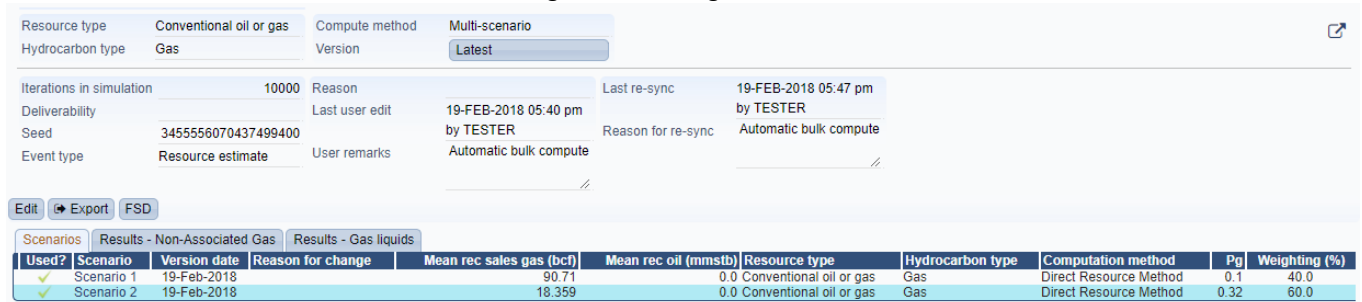
Prospects & Leads

Multi-Scenario computation

Prospects & Leads has been extended to support multi-scenarios computation for target prospective resources. Prospective resources for a target can be computed for any number of scenarios, each using different input parameters and/or compute methods. One or more of these scenarios can be combined into a single resource computation, with each scenario used having a weighting specified. There is a new Scenarios tab where the scenarios can be created and a resource computation made.

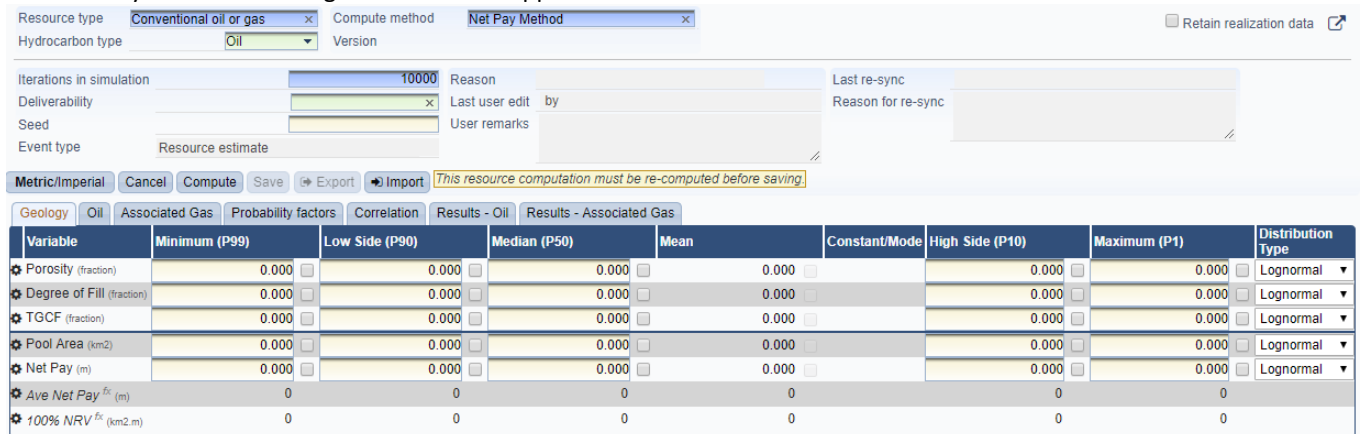


On the existing target prospective resources screen, a new compute method “Multi-scenario” is available. When selected, the screen will change context, and display the scenarios available. One or more scenarios can be selected, and weightings applied to each selected scenario. The final results will be generated using Monte Carlo simulation.



Probabilistic computation for contingent resources

Probabilistic compute methods have been made available for contingent resource computations, which adds to the existing functionality to calculate using a deterministic approach.



Detailed Release Notes Summary dbMap/Web 2018.1

Enhancements

dbMap/Web - Client

- [70217](#) FracDB - CSG Loader - Unused fields have been greyed out (Santos)
- [70229](#) FracDB - CSG Loader - Foam Quality value saved to the database (Santos)
- [69793](#) Add rule to prevent perforation depth being deeper than well TD (Santos)
- [70051](#) Production charts changed to alert the user when a completion conduit series is being displayed on a "By Well" chart (Santos)
- [69813](#) "Other objective" field added to Well Spec Cards (Origin)
- [69822](#) Added series that were only available for the completion conduit chart to production report, when on the well chart (Santos)
- [70497](#) New multi-well remark created for WSC (Origin)
- [69549](#) PLDB - Captured indicator renamed to "STO interest" on prospect header screen (Santos)
- [70762](#) PLDB - Map tab enabled on Prospect panel (Santos)
- [69523](#) PLDB - Restricted designations for Drilling Opportunities (Santos)
- [70505](#) Upper estimated pressure added to WSC Estimated Pressures screen (Origin)
- [70494](#) Well test review process implemented (Origin)

dbMap/Web - General

- [70910](#) DMS display on all panels to changed to 2 decimal places and decimal degrees truncated to 7 decimal places when viewed
- [58671](#) Added support for desktop well selection files in dbMap/Web
- [69540](#) RM - Contained by reference number added to item list and "contained by" tab
- [70723](#) Well Logs Browser - Log Run depth labels made compliant with LAS terminology
- [49024](#) Shopping cart added to RM and Well Logs Browser
- [66663](#) RM - Added option to replace an electronic file
- [69814](#) Improved performance when exporting large lists
- [70909](#) Licensing - 2018.1 requires a new license file to be used
- [70307](#) Permit participants screen added
- [70941](#) PPDM 3.8 Wells - Added source and remark fields for well locations
- [66526](#) Records management dashboard added
- [68096](#) Records management wizard enhanced to allow creation of links to Basins, Permits, Fields and Facilities
- [33546](#) Selected/unselected count added to most dbMap/Web lists
- [69110](#) Well Logs Browser - Log files made downloadable as a zip file
- [70400](#) Well numeric ID has been added to the well header for PPDM 3.8 clients

dbMap/Web - PLDB

- [63487](#) Probabilistic compute methods made available for Contingent resources
- [61862](#) Chronology drilling opportunities related panels moved to drilling opportunity screen
- [69816](#) Added plot showing target resources evolution over time
- [69580](#) Chronology child screen added to prospect target
- [68801](#) Multi-scenario computation for targets added
- [69468](#) Remove Business Unit from the Portfolio Manager dialog
- [69522](#) Removed Business Unit from Prospect Header screen
- [69476](#) Removed Business Unit from the Prospect tree filter
- [64882](#) The initial seed for a target or prospect computation can now be specified

Detailed Release Notes Summary dbMap/Web 2018.1

Bug Fixes

dbMap/Web - Client

- [70122](#) Wells/Tops - Correct query defined for Tops list (Santos)
- [69706](#) FracDB - CSG Loader - Can now load stage after deleting old records (Santos)
- [70282](#) Hover information not showing all points in some cases fixed in production charts (Santos)
- [70263](#) Fixed edit and reset of axis in production charts (Santos)
- [70861](#) WSC list not showing wells linked to statuses other than "proposed" fixed (Origin)
- [69833](#) Fixed wrong query linked to copy lookup in the well spec card module (Origin)

dbMap/Web - General

- [70920](#) RM - Same record appearing multiple times in bulk update wizard fixed
- [69853](#) Fixed error on Permit Reference screen
- [70345](#) Production Charts - Chart by top well zones not restricting by well selection fixed
- [70342](#) Production Charts - Fail to load multi well production chart before highlighting a row in the well grid fixed
- [70343](#) Production Charts - Multi well chart failing to display due to no default 'Show chart by' value fixed
- [70530](#) RM - Allow setting a Storage path after it has been cleared
- [70951](#) Several well symbols now available in dbMap/Web that were formally only available in Petrosys PRO

dbMap/Web - PLDB

- [70115](#) Play interval lookup producing no rows fixed in prospect wizard

Petrosys Release dbMap/Web 2018.1

Detailed Release Notes

[dbMap/Web - Client](#) [Enhancements](#)

FracDB - CSG Loader - Unused fields have been greyed out (Santos) 70217

Some unused fields have been greyed out for Santos in their version of the frac cut/paste loader, in order to avoid confusion; these fields are currently not loaded into the database.

FracDB - CSG Loader - Foam Quality value saved to the database (Santos)

70229

FracDb copy/paste of entire Frac from spreadsheet column. Extra columns now supported for Foam Flag and Foam Quality.

Add rule to prevent perforation depth being deeper than well TD (Santos)

69793

Added data integrity check to make sure that the Perforation's base depth is not lower than the well's driller depth.

Production charts changed to alert the user when a completion conduit series is being displayed on a "By Well" chart (Santos) 70051

The production chart screen now issues a warning message if a selected series is getting plot data from multiple completion conduits and the user is seeing a WELL related plot.

"Other objective" field added to Well Spec Cards (Origin) 69813

An optional "other objective" remark has been added to the well spec cards module.

Added series that were only available for the completion conduit chart to production report, when on the well chart (Santos) 69822

The series recently made available to the wells option in the production chart screen (they were available to completion conduits charts only) have been incorporated to the production report, as well.

New multi-well remark created for WSC (Origin) 70497

A new multi-well special remark has been created for the well spec card (WSC). This new remark is made available when the well profile is declared "multi lateral".

PLDB - Captured indicator renamed to "STO interest" on prospect header screen (Santos) 69549

The "captured" indicator has been renamed "STO interest".

PLDB - Map tab enabled on Prospect panel (Santos) 70762

The "map" tab has been enabled for SANTOS on PLDB related screens.

PLDB - Restricted designations for Drilling Opportunities (Santos) 69523

The list of "Designation" values available on the "dbMap/Web - Prospects & Leads / Prospects / Drilling Opportunities" screen, has been restricted base on the "Prospect category".

Upper estimated pressure added to WSC Estimated Pressures screen (Origin)

70505

A new column has been added to the estimated pressure screen in the well spec card module. Now it's possible to register a maximum estimated pressure and, if this is done, the estimated pressure is reported as a range.

Well test review process implemented (Origin)

70494

A simple well test review workflow has been added to the ORIGIN branch of dbMap/Web

[dbMap/Web - Client](#)

[Bug Fixes](#)

Wells/Tops - Correct query defined for Tops list (Santos)

70122

Fixed a bug preventing the "dbMap/Web - Wells / Tops" list from being populated when using an Oracle 12 database.

FracDB - CSG Loader - Can now load stage after deleting old records (Santos)

69706

FracDb - Copy/Paste of entire Frac Stage, once done, could not be re-done due to remnants of the original copy/paste remaining in the database even after the Frac Stage is deleted. Resolved by ensuring no remnants remain after deletion of the Frac Stage.

Hover information not showing all points in some cases fixed in production charts (Santos)

70282

A bug, preventing all wells from being displayed when the user hovered the mouse over a point in a stacked production chart, has been fixed.

Fixed edit and reset of axis in production charts (Santos)

70263

A bug preventing the correct set and reset of the axes ranges of the production chart screen has been fixed.

WSC list not showing wells linked to statuses other than "proposed" fixed (Origin)

70861

A bug, preventing wells that are not PROPOSED from appearing in the Well Spec Cards list, has been fixed.

Fixed wrong query linked to copy lookup in the well spec card module (Origin)

69833

A bug in the SQL query associated to the copy button lookup has been fixed.

[dbMap/Web - General](#) [Enhancements](#)

DMS display on all panels to changed to 2 decimal places and decimal degrees truncated to 7 decimal places when viewed

70910

The number of decimal places used to display degrees/ minutes/ seconds coordinates has been changed to 2, and the view of decimal degrees is truncated to 7 decimal places however will show less if less are stored in the database.

Added support for desktop well selection files in dbMap/Web

58671

Wells, Seismic Surveys and Seismic lines can now use selection files saved from Petrosys PRO

RM - Contained by reference number added to item list and "contained by" tab

69540

The reference number of the container item has been added to records management, both to the list grid and to the details panel.

Well Logs Browser - Log Run depth labels made compliant with LAS terminology

70723

The top and base depth fields, in the well log runs section of the the well logs browser screen, have had their labels changed to start depth and stop depth, in order to clarify their meanings and make them clearly distinct from the top/base depth fields in the well log curves section.

Shopping cart added to RM and Well Logs Browser

49024

A shopping cart feature has been added to some screens in dbMap/Web.

A shopping cart exists to allow users to collect things, whilst browsing the database in a dbMap/Web session or across a series of sessions, that they ultimately want delivered to them in some form. This might be, in principle, a collection of RM digital items, a series of digital well logs, seismic data, or access to physical things like cores.

Variants of shopping carts are defined for different explicit use cases, for example a shopping cart for well log curves that is going to drive an OilWare extraction has a user interface different from one for generic digital RM items.

Items can be added to the current shopping cart using 'Add Items/Files to Cart' buttons.

A user can permanently remove individual items, or groups of them, from the request by using trash bins in the shopping cart.

Shopping carts are also persistent, that is: if a user logs off and, later on, logs on again, all his/ her shopping carts will still be there and retain content.

Items in a shopping cart can be downloaded or operated upon via specific actions that may vary depending on the shopping cart's operational context.

RM - Added option to replace an electronic file

66663

In records management an electronic file can now be replaced with an updated version of the same file.

Improved performance when exporting large lists

69814

Export steps sometimes caused an apparent "freeze" when a user tried to export a large list to MS-EXCEL. This logic has been improved so that this condition doesn't happen.

Licensing - 2018.1 requires a new license file to be used

70909

dbMap/Web 2018.1 requires a new license file to be used. dbMap/Web 2018.1 licenses are also compatible with earlier versions of dbMap/Web. Please contact Petrosys support if you need help downloading or installing your new license file.

Permit participants screen added

70307

Permits definition has been changed to allow for multiple participants, rather than a single "operator", via a new permit participants screen.

PPDM 3.8 Wells - Added source and remark fields for well locations

70941

Source and remark fields have been added to surface and bottom locations for wells.

Records management dashboard added

66526

A new records management dashboard has been added to dbMap/Web, presenting several useful summaries and charts about RM records.

Records management wizard enhanced to allow creation of links to Basins, Permits, Fields and Facilities

68096

The ability to add links to basins, permits, fields and facilities has been added to the records management creation wizard, greatly simplifying the process of creating new records. These links can now be added at record creation time, rather than afterwards, in additional steps.

Selected/unselected count added to most dbMap/Web lists

33546

Lists in dbMap/Web have been changed to display a count of selected and unselected records, similar to the ones displayed by PETROSYS PRO on its lists.

Well Logs Browser - Log files made downloadable as a zip file

69110

dbMap/Web's well log browser has been enhanced to allow a user to download, in a single step, all log files where curves in the shopping cart are located. This makes the process of obtaining selected log files much simpler.

Well numeric ID has been added to the well header for PPDM 3.8 clients

70400

The 'Well numeric ID' has been added to the Well panel.

dbMap/Web - General

Bug Fixes

RM - Same record appearing multiple times in bulk update wizard fixed

70920

A bug, potentially causing the same record to appear multiple times in the records management bulk update wizard's visual check grid, has been fixed.

Fixed error on Permit Reference screen

69853

A bug blocking the use of the permit reference screen has been fixed, and this child screen, previously available only to PLDB users, has been made available to all PPDM38 customers.

Production Charts - Chart by top well zones not restricting by well selection fixed

70345

A bug, causing the production chart by top well zones to consider all wells in the zones, rather than only the selected wells in the list, has been fixed.

Production Charts - Fail to load multi well production chart before highlighting a row in the well grid fixed

70342

A bug, preventing the production chart for several wells from being displayed if no well had been selected on the well list, has been fixed.

Production Charts - Multi well chart failing to display due to no default 'Show chart by' value fixed

70343

A bug, causing the chart to appear blank because no initial default value for "show chart by" existed, has been fixed.

RM - Allow setting a Storage path after it has been cleared

70530

Adding a Storage path to an existing RM item that previously had no Storage path will now save without error.

Several well symbols now available in dbMap/Web that were formally only available in Petrosys PRO

70951

New well symbols have been added to dbMap/Web that were previously only available in Petrosys PRO.

Probabilistic compute methods made available for Contingent resources

63487

All probabilistic methods have been made available to CONTINGENT resources, as well. Previously, they were available only for PROSPECTIVE, with CONTINGENT being restricted to deterministic methods.

Chronology drilling opportunities related panels moved to drilling opportunity screen

61862

The sub-panels in chronology that were drilling opportunity specific have been moved to the drilling opportunity screen, thus making chronology visualisation simpler and more straightforward.

Added plot showing target resources evolution over time

69816

A new chart has been added to PLDB, at target level, displaying a historical evolution for the computed oil and gas results for prospective resources.

Chronology child screen added to prospect target

69580

A chronology screen with target scope has been added under prospect target, making it simpler to see events that took place at target level.

Multi-scenario computation for targets added

68801

PLDB has been enhanced to support multiple possible scenarios for a target prospective resource computation. This way, users can define a set of different possibilities for a target's characteristics and, at the end, compute a result for the target that is a weighted combination of those. This may be useful to accommodate different view, or opinions, on the target by different groups of professionals. Use of multi-scenario does not preclude the target from being rolled-up to prospect level. Details on multi-scenario can be found in dbMap/Web help documents.

Remove Business Unit from the Portfolio Manager dialog

69468

Business Unit and the Portfolio type has been removed from the Portfolio Manager dialog.

Removed Business Unit from Prospect Header screen

69522

Business Unit has been removed from the Prospect panel's General tab.

Removed Business Unit from the Prospect tree filter

69476

Business Unit and the Portfolio type has been removed from the Exploration Portfolio tree filter

The initial seed for a target or prospect computation can now be specified

64882

Support for direct typing of random number seeds has been added to PLDB. This is an optional feature, and it can be enabled or disabled via a SQC configuration option.

Play interval lookup producing no rows fixed in prospect wizard

70115

A bug preventing a user from adding a new target to a prospect, via the prospect wizard, without pre-populating fields from an existing target has been fixed.