



Petrosys version 17.2 introduces the Petrosys Exchange feature. Building on Petrosys' extensive suite of third-party connections, Petrosys Exchange allows for the transfer of a data type from one data source to another.

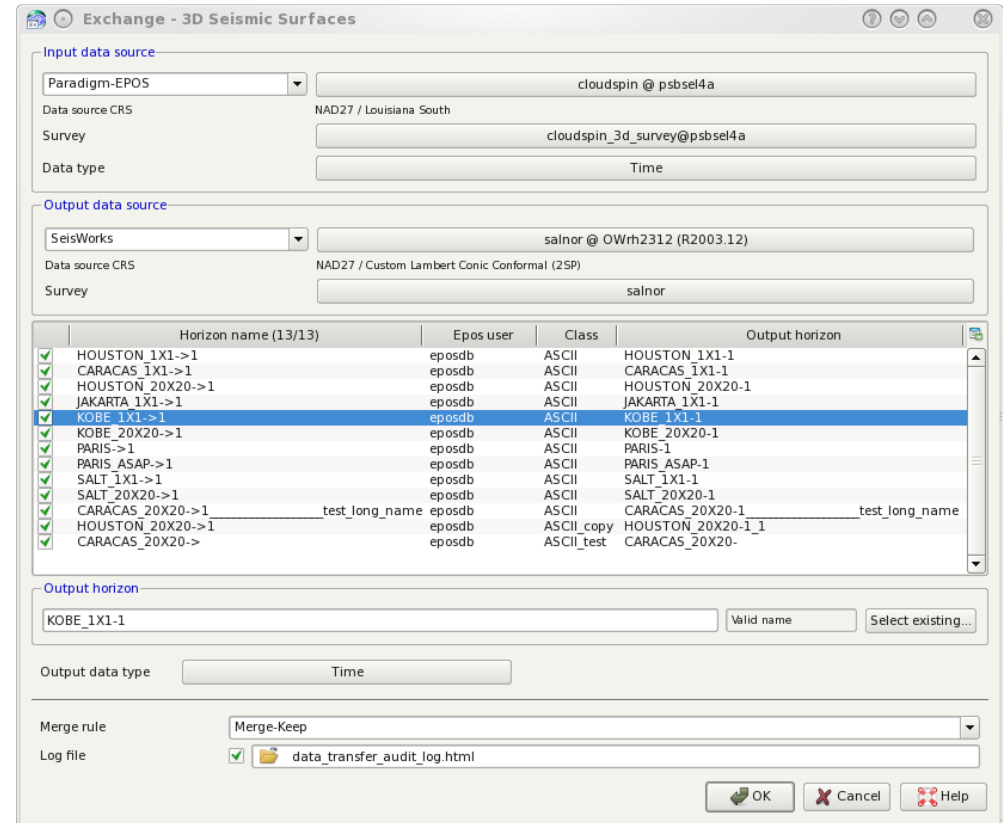
The pre-existing features of Spatial Data Translator and Wells Import Wizard have been re-arranged under the Exchange menu item, joined by the newly released 3D Seismic Surfaces Exchange and Fault Sticks Exchange options.

In the initial release, 3D seismic surfaces and fault sticks are able to be read from Paradigm-EPOS4 and written to SeisWorks R2003.12. The Exchange tools require a consistent survey to be defined within each data source for successful transfer.

Exchange of surfaces and fault sticks can be saved to Surface Modeling task files so they can be easily re-executed and support either preservation or overwrite modes for existing data in the destination data source.

Functionality for 3D seismic surfaces and Fault sticks includes:

- Rename horizons and faults during transfer.
- Save your settings to a task file for replay later.
- Validation that surveys are equivalent.
- HTML and XML audit report showing what data was transferred.



Petrosys Exchange has been developed as an extendible framework to allow other third-party data sources to be added with further development. Please contact your Petrosys sales or support representative to provide input to possible future enhancements.

This feature was developed as a client sponsored project and has only been included in the general release on a trial basis. Other than the project sponsors, clients should expect that it may be subject to a separate licensing in future.

Enhancements

Petrosys release 17_2 [7 entries]

3D Viewer

[27971](#) Option added for higher resolution map file display

Configuration

[33072](#) Custom install script removes duplicate entries from license server registry key

Connections, import and export

[32244](#) Petrosys Exchange - Read 3D seismic horizons and Fault picks from Paradigm EPOS and write to SeisWorks R2003.12

General - User interface

[32967](#) Improved sorting of columns with dates in scrolled lists

Help

[33091](#) Online Help Revisions

Mapping

[33025](#) Exporting 3D interpretation to spatial formats allows Z-values to be included

Surface Modeling

[32922](#) Petrel Grid Export - Transfer as much Petrosys metadata as possible to Petrel

Bug Fixes

Petrosys release 17_2 [10 entries]

Client specific

- [32326](#) Display/Drilling Opportunities no longer requires a connection reselection when modifying the layer
- [33080](#) Fixed BP specific Finder AOI well header filter query

dbMap

- [33078](#) Titles - Fixed crash on joint venture panel

dbMap - User interface

- [32211](#) Display/Wells - Fixed incorrect label on Well Symbol tab for Petra connection

General - User interface

- [32683](#) Improved behaviour of tree widget

Mapping

- [33159](#) Exporting spatial to Petrel from Mapping allows Z-values to be included
- [32895](#) Using the Apply button on a 2D mapping layer dialog always redraws the map

Mapping/Spatial

- [32998](#) Display/GIS allows annotation with dbMap Culture decimal attributes

Project Selector

- [33104](#) Project Selector - New - Partial folder names are no longer created, performance has been improved

Seismic data

- [32859](#) Improved performance of SDF Editor on large SDF files

Detailed Release Notes

Petrosys release 17_2 [17 entries]

[3D Viewer](#)

[Enhancements](#)

Option added for higher resolution map file display

27971

The option /Display/Map File (.dbm) can now draw in a higher "Ultra" resolution for better quality images when outputting to high-res raster files via /Scene/Save to Raster...

[Client specific](#)

[Bug Fixes](#)

Display/Drilling Opportunities no longer requires a connection reselection when modifying the layer

32326

A bug has been fixed whereby upon editing an existing Drilling Opportunities mapping layer the dialog was requiring a reselection of the database connection.

Fixed BP specific Finder AOI well header filter query

33080

The SQL query used to filter well headers from Finder based on an AOI has had the 'where' clause updated to correctly select well header records.

Custom install script removes duplicate entries from license server registry key 33072

Custom install script now analyses current license server registry key value and removes any duplicates.

Petrosys Exchange - Read 3D seismic horizons and Fault picks from Paradigm EPOS and write to SeisWorks R2003.12 32244

Version 17.2 includes the first release of the Petrosys Exchange series of tools to enable direct sharing of data between different 3rd party applications.

New functionality in this release:

- Read 3D seismic survey horizon data from Paradigm EPOS and write it to SeisWorks R2003.12 projects
- Read Fault picks (Fault sticks) from Paradigm EPOS and write them to SeisWorks R2003.12 projects.

The 3D seismic survey horizon data transfer requires that a 3D seismic survey with the same definition (inlines, xlines, rotation, spacing) as the Paradigm EPOS survey already exists in the SeisWorks project.

[dbMap](#)

[Bug Fixes](#)

Titles - Fixed crash on joint venture panel 33078

A crash when accessing the "Joint Venture" panel in the /Lists/Titles screen has been fixed. The crash would occur only on the selection of certain joint venture items in the list.

[dbMap - User interface](#)

[Bug Fixes](#)

Display/Wells - Fixed incorrect label on Well Symbol tab for Petra connection 32211

The Wells Symbols tab for a Petra connection incorrectly labelled the formation selection button as Zone. This has now been fixed and is correctly labelled as Formation.

[General - User interface](#)

[Enhancements](#)

Improved sorting of columns with dates in scrolled lists

32967

Scrolled lists now sort dates correctly, including custom formats.

[General - User interface](#)

[Bug Fixes](#)

Improved behaviour of tree widget

32683

Improved user interface experience of tree widget in Mapping/Display/Map Elements/Legend. The options to move items up and down now retain the current selection which makes the moving operation more streamlined when moving multiple times.

[Help](#)

[Enhancements](#)

Online Help Revisions

33091

Revisions have been made to the online help - old screenshots have been replaced, obsolete information has been revised or eliminated, multiple topics have been rewritten and various chapters have been updated to make the index easier to navigate. The Getting Started Guide has been reviewed based on feedback.

All new features added in versions 17.1 and 17.2 have been documented in the appropriate sections of the help.

Mapping

Enhancements

Exporting 3D interpretation to spatial formats allows Z-values to be included 33025

The Display/Grid/Values and Display/3D Seismic Surface/Values options both allow Z-values to be optionally included when the RMB/Export spatial data option is used.

Mapping

Bug Fixes

Exporting spatial to Petrel from Mapping allows Z-values to be included 33159

When data is exported from a 2D mapping display layer to Petrel using the RMB/Export spatial data option, Z-values are now able to be included (assuming the map layer contains Z-values).

Using the Apply button on a 2D mapping layer dialog always redraws the map 32895

This behaviour is now equivalent to version 16 and earlier of Petrosys. In previous 17 versions, a redraw would only occur after pressing Apply if automatic redraw was enabled.

Mapping/Spatial

Bug Fixes

Display/GIS allows annotation with dbMap Culture decimal attributes 32998

Display/GIS now handles dbMap Culture floating point attribute correctly. In previous versions decimal attributes were not available as annotations.

Project Selector

Bug Fixes

Project Selector - New - Partial folder names are no longer created, performance has been improved 33104

The "New Project" dialog will now not create partial folders when typing into the "Parent Directory" field. This could have happened when very restrictive permissions were enabled on the folder or its parent. Additionally the performance of typing into this field has been improved so that there is no delay between typing each character.

Seismic data

Bug Fixes

Improved performance of SDF Editor on large SDF files 32859

Large SDF files get instantly into SDF Editor's list upon selection now.

Surface Modeling Enhancements

Petrel Grid Export - Transfer as much Petrosys metadata as possible to Petrel 32922

Export of Petrosys grid to Petrel now includes Petrosys grids metadata. The metadata are stored under the Info/Comment tab in Petrel.